

## Liberty Street, SW9

£485 Per week

A lovely, two double-bedroom flat situated on a quiet Victorian residential tree lined road in Oval, offering a separate reception and kitchen area, eat in kitchen and

Liberty Street is within a short walking distance of Oval (Northern) and Stockwell (Northern and Victoria) tube stations and the bars and restaurants of Brixton. Central London is only moments away.

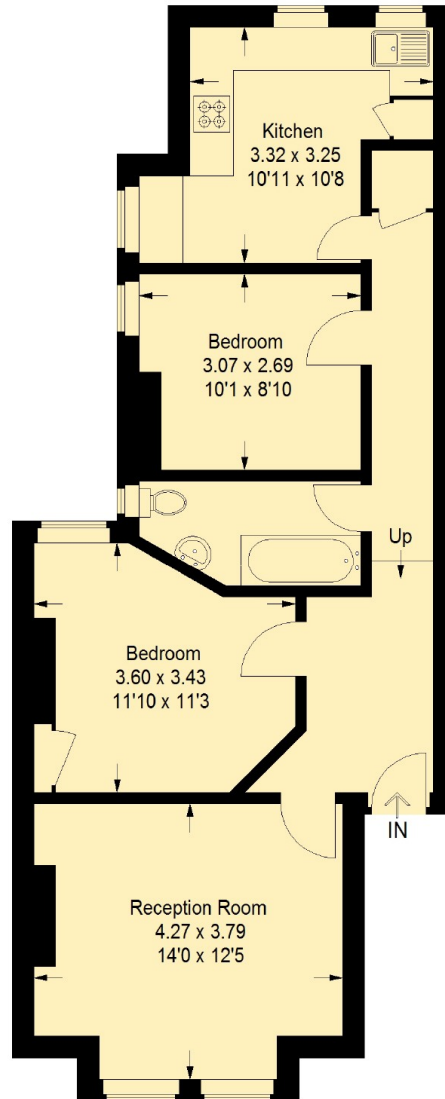
### Features

- Two Double Bedrooms
- Spacious Reception Room
- Eat In Kitchen
- Feature Firewall
- Modern Bathroom
- Prime Location

Liberty Street,  
, SW9

## Liberty Street SW9

Approximate Gross Internal Area  
62.2 sq m / 670 sq ft



### Third Floor

This plan is for layout guidance only. Not drawn to scale unless stated. Windows and door openings are approximate. Whilst every care is taken in the preparation of this plan, please check all dimensions, shapes and compass bearings before making any decisions reliant upon them. (ID731174)