



St. George Wharf, SW8

£888 Per week

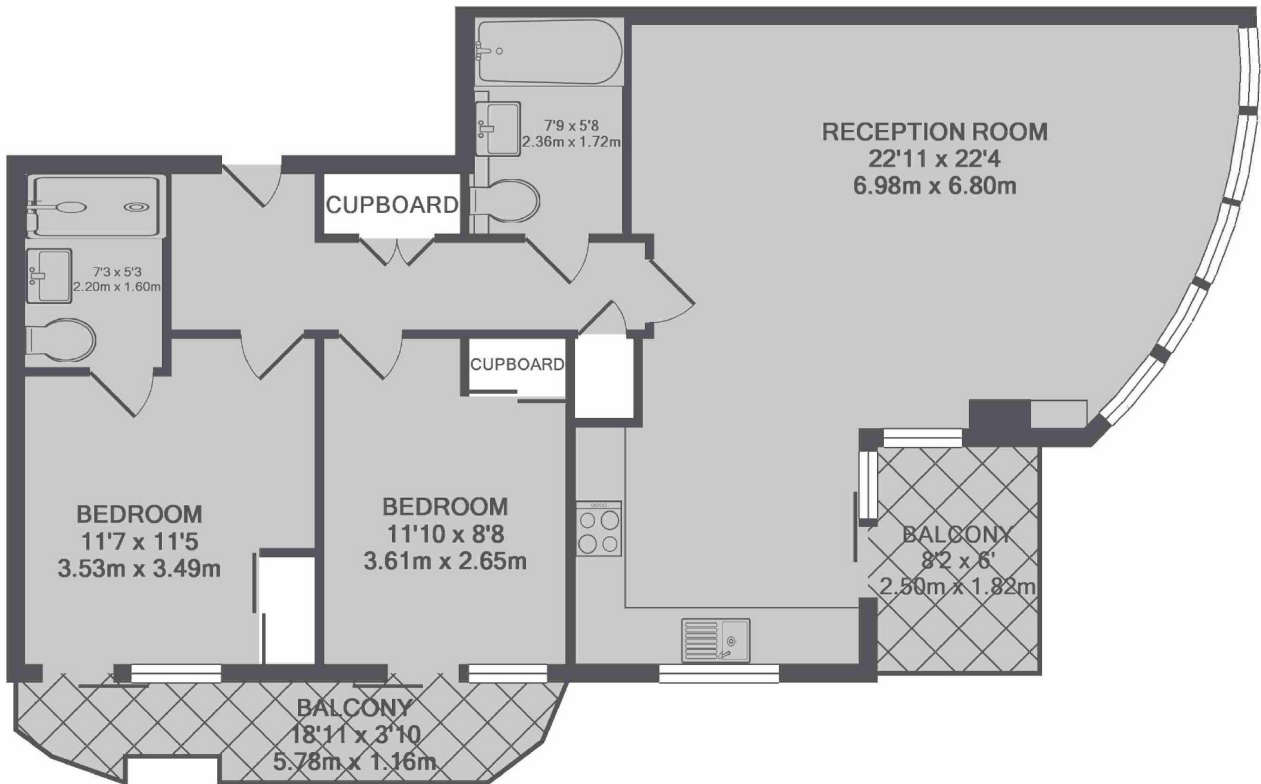
An exceptional two double bedroom two bathroom apartment in the popular St George Wharf development. The property comprises of a spacious open plan kitchen with access to the balcony, a master bedroom with Ensuite, a further double bedroom and family bathroom.

Situated on the River Thames. A variety of different restaurants and coffee shops and also Vauxhall Bridge which is close to Pimlico's restaurants, pubs, bars and weekly food market.

Features

- Underfloor Heating
- Two Bedrooms
- Two Bathrooms
- Two Balconies
- 24Hr Concierge Service
- Fantastic Views

St. George Wharf, London, SW8



TOTAL APPROX. FLOOR AREA 768 SQ.FT. (71.3 SQ.M.)
Made with Metropix ©2018