



Brixton Road, SW9

£923 Per week

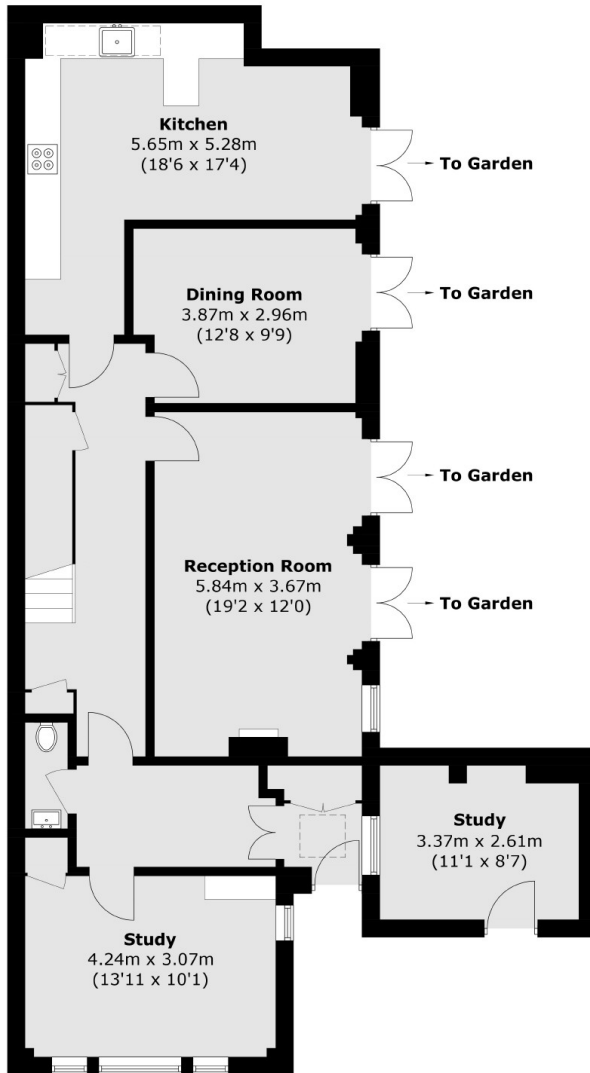
A large four bedroom house spanning nearly 2000 sq ft with a private courtyard garden. Further benefits include a spacious reception room, a separate dining room and an eat-in kitchen, all of which open directly out to the private courtyard. This property is available to families on an unfurnished basis.

The Vicarage is a short walk from Oval Underground Station (Northern Line) and Kennington Park and the popular Oval Farmers' Market at St. Marks Churchyard.

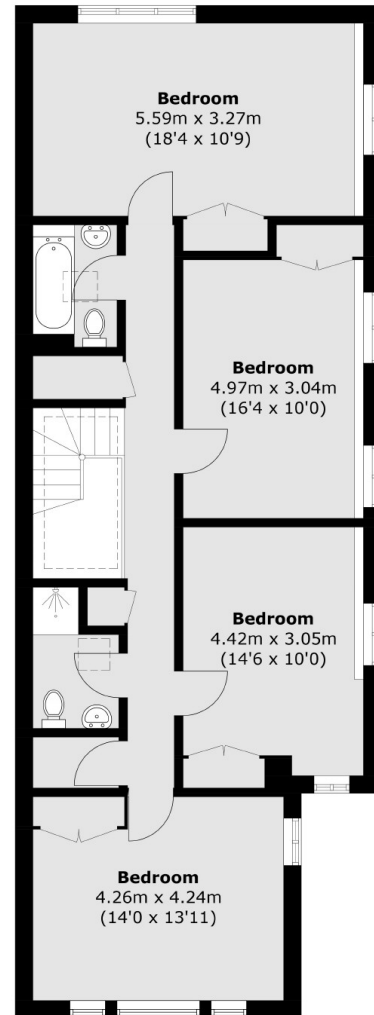
Features

- Four Bedroom House
- Two Bathrooms
- Large Reception
- Private Courtyard
- Families Only
- Unfurnished

Brixton Road,
London, SW9



Ground Floor



First Floor

Total area (approx.): 182.1 sq. m (1,960.1 sq. ft)
Outbuilding: 8.9 sq. m (95.8 sq. ft)