



Bondway, SW8

£1,096 Per week

A stunning two bedroom 13th floor apartment set in the highly desirable Damac Tower with striking views of central London. The property offers two bathrooms, an open plan kitchen/reception room and a winter garden. Valet Parking available by separate negotiation.

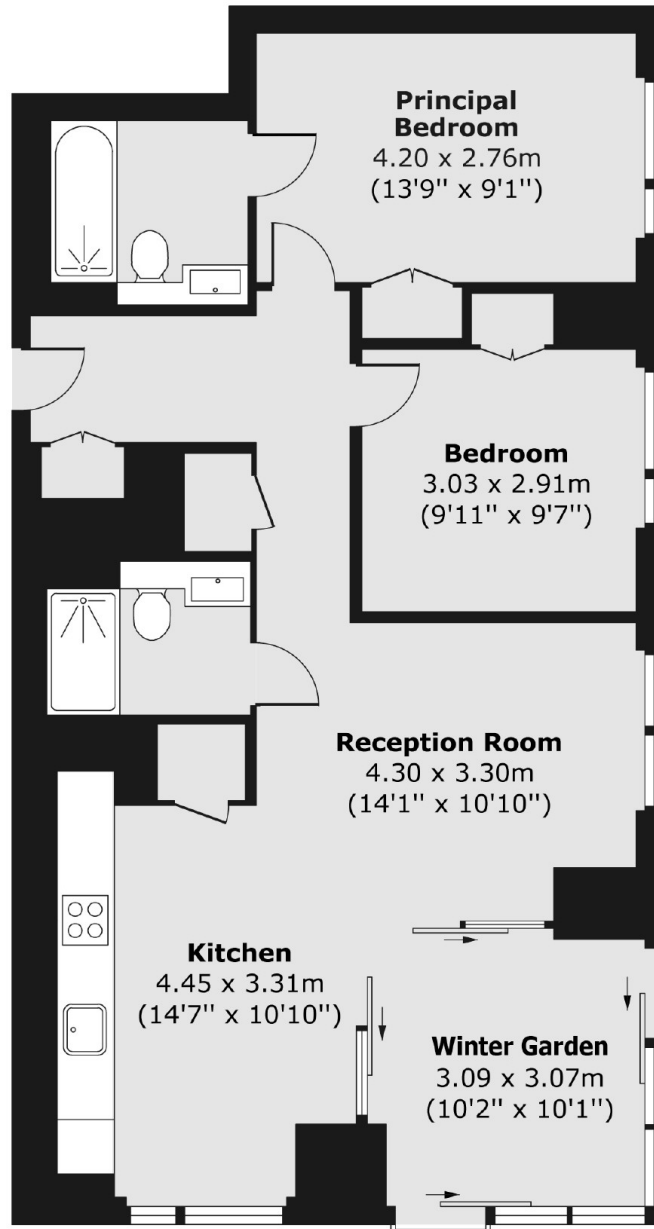
DAMAC Tower is less than 0.2 miles from Vauxhall Tube (Victoria Line), less than 0.5 miles to Nine Elms Tube (Northern Line). The apartment further benefits includes resident's lounge, gym, pool, cinema and 24 hr concierge.

Features

- New Development
- Two Double Bedrooms
- Two Bathrooms
- Thirteenth Floor
- Central Location
- Premium Resident Facilities

Bondway,
London, SW8

Thirteenth Floor



Total area (approx.) 82.45 sq. m (887 sq. ft)