



Sancroft Street, SE11

£623 Per week

This substantial two bedroom ground floor apartment offers ample living space with a separate study and a family bathroom. The property has plenty of storage, large sash windows and parquet flooring in the hallway and reception room.

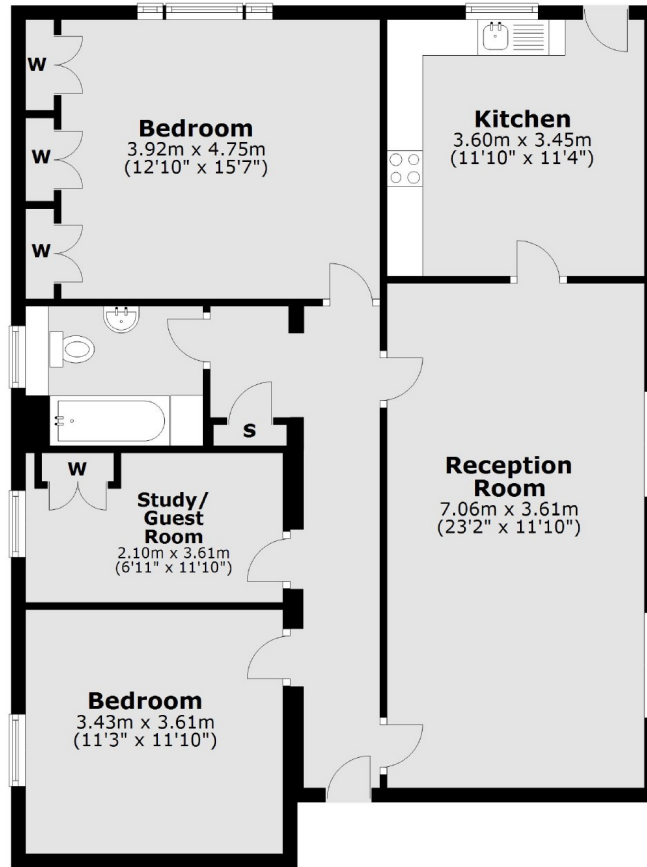
Kennington Palace Court is a Grade II Listed building located between Vauxhall and Kennington tube stations (Victoria / Northern Line). There's a variety of pubs, restaurants at Kennington Cross with the popular Duchy Arms close by.

Features

- Two Double Bedrooms
- Large Reception Room
- Separate Kitchen
- Parquet Flooring
- Study / Spare Room
- Communal Garden

Sancroft Street,
London, SE11

Ground Floor



Total area: approx. 95.4 sq. metres (1026.9 sq. feet)