



Heyford Avenue, SW8

£392 Per week

A very well presented one double bedroom split level apartment set on a quite residential street in Vauxhall. The property features a brand new kitchen/reception room, a tiled bathroom and a Juliet balcony.

Heyford Avenue is a quiet residential street located in the heart of the 'Little Portugal' which is ideally located for Vauxhall station (Victoria Line and National Rail).

Features

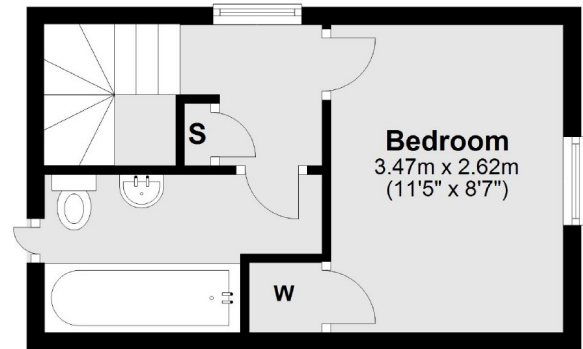
- One Double Bedrooms
- Split Level Apartment
- Brand New Kitchen
- Tiled Bathrooms
- Great Location
- Vauxhall Station

Heyford Avenue, London, SW8

First Floor



First Floor



Main area: Approx. 39.6 sq. metres (425.9 sq. feet)
Plus roof terrace, approx. 3.3 sq. metres (35.4 sq. feet)