



Cabanel Place, SE11

£395 Per week

This Grade II Listed development has been converted into apartments and carefully restored over the years. The property offers a large double bedroom, a modern bathroom and an open plan kitchen/living room.

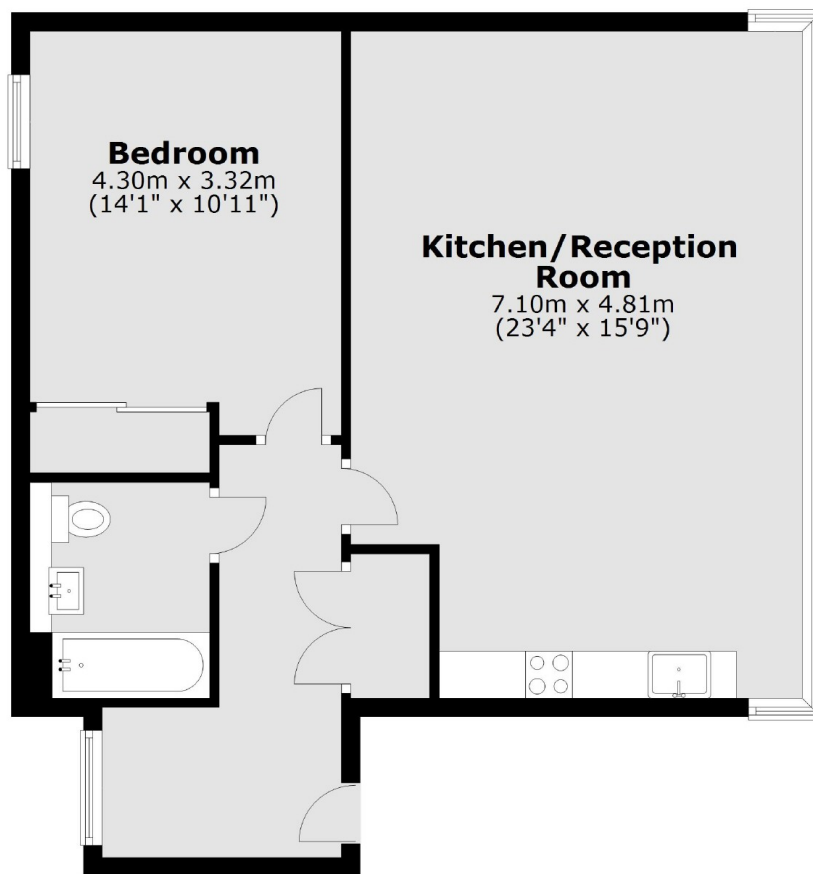
Cabanel Place is moments from Kennington & Westminster. There are excellent transport links nearby at Kennington tube & Vauxhall Mainline.

Features

- One Double Bedroom
- Second Floor Flat
- Communal Garden
- Gated Development
- Grade II Listed
- Good Location

Cabanel Place, London, SE11

Second Floor



Total area: approx. 62.7 sq. metres (675.3 sq. feet)

Contact

To arrange a viewing call our office on the number below or visit our website.



Energy Rating: C. We aim to make our particulars both accurate and reliable. However they are not guaranteed; nor do they form part of an offer or contract. If you require clarification on any points then please contact us, especially if you're traveling some distance to view. Please note that appliances and heating systems have not been tested and therefore no warranties can be given as to their good working order.