



Lawn Lane, SW8

£577 Per week

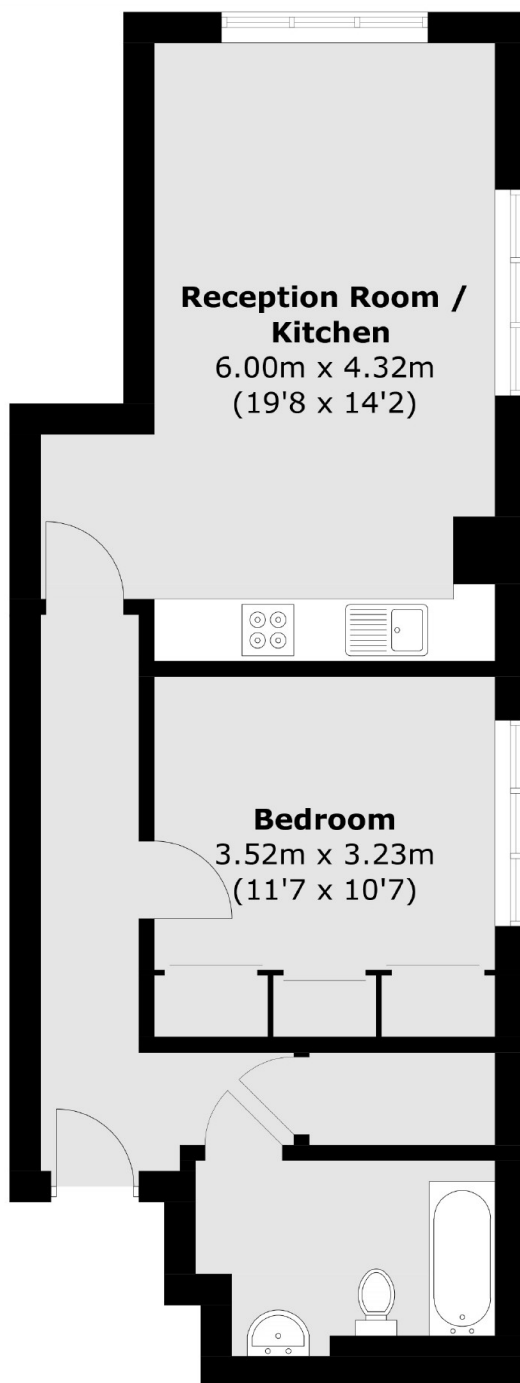
This outstanding one bedroom apartment set in a modern warehouse conversion. The property offers period features that merge flawlessly with the contemporary interior design. The property is perfect for a couple or single professional.

Embassy Works is a secure gated development on a quiet road close to Vauxhall Park. Ideally positioned for the Victoria Line, railway and bus services with an array of shops and amenities.

Features

- One Double Bedroom
- Modern Development
- Great Central Location
- Underfloor Heating
- Secure Bike Storage
- Concierge Service

Lawn Lane,
London, SW8



Total area (approx.): 49.1 sq. m (528.5 sq. ft)

Dexters

Vauxhall
377-379 Kennington Lane
London
SE11 5QY
Lettings
020 7793 8111

Energy Rating: E. We aim to make our particulars both accurate and reliable. However they are not guaranteed; nor do they form part of an offer or contract. If you require clarification on any points then please contact us, especially if you're traveling some distance to view. Please note that appliances and heating systems have not been tested and therefore no warranties can be given as to their good working order.

 **RICS** | Regulated
Estate Agent
and Letting Agent

dexters.co.uk