



Gosling Way, SW9

£519 Per week

A well maintained two bedroom, split level apartment located just off Brixton Road. The property is in great condition with beautiful hard flooring throughout, a modern kitchen, bathroom, WC and a private balcony.

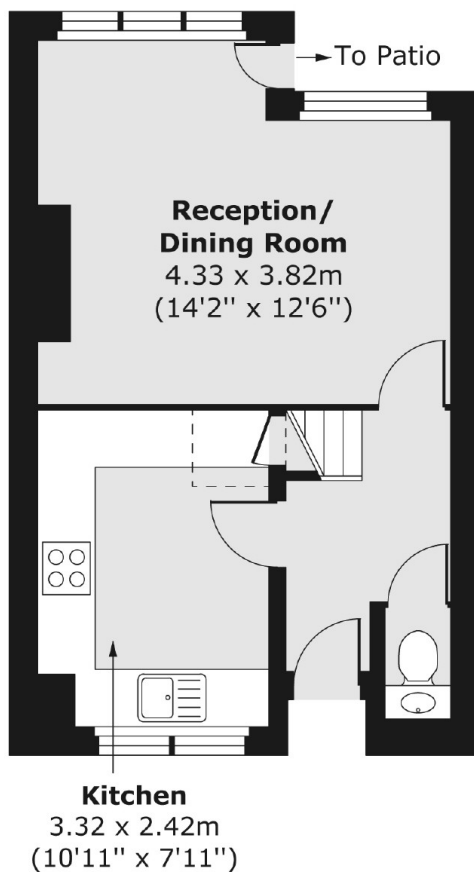
Gosling Way is a short walk from Brixton, Oval and Stockwell with an array of shops on Brixton Road and close to the green open space of Eythorne Park.

Features

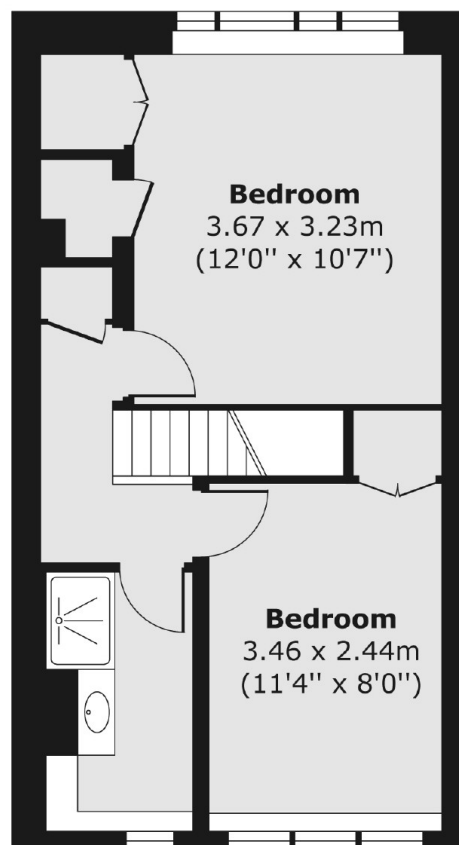
- Two Bedrooms
- Modern Bathroom
- Private Entrance
- Duplex Apartment
- Private Balcony
- Small Block

Gosling Way, London, SW9

Ground Floor



First Floor



Total area (approx.) 62.10 sq. m (668 sq. ft)