



Bethwin Road, SE5

£969 Per week

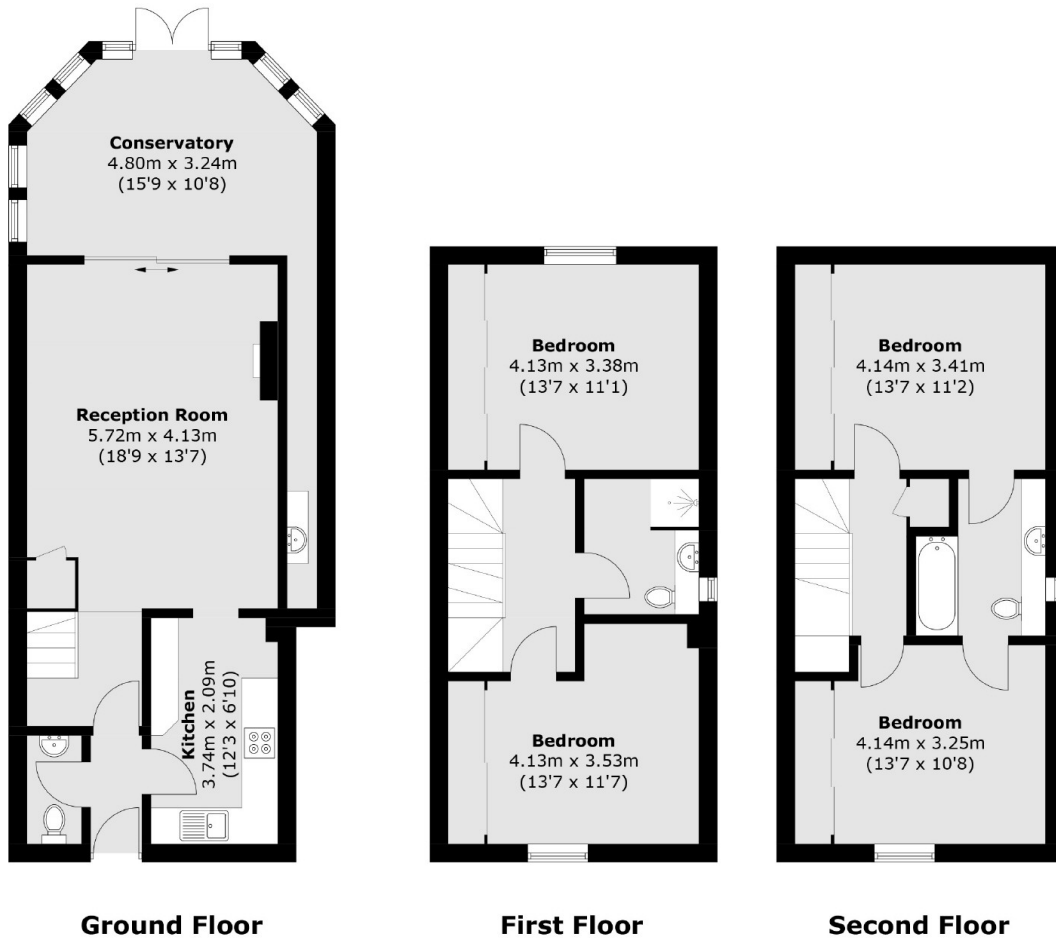
A large four bedroom terraced house with a private garden and an allocated parking space. The property spans approximately 1,500 sq ft over three floors, bathrooms servicing each level, fitted wardrobes in each bedroom, a large reception room, a bright and spacious conservatory as well as a separate utility area.

Bethwin Road is a quiet residential street less than a mile from Oval & Kennington tube stations and a short walk to both Kennington Park and Burgess Park. The restaurants and bars of Elephant Park are easily accessible including the popular Mercato Metropolitano.

Features

- Terraced House
- Utility Room
- Large Conservatory
- Wifi Included
- Private Garden
- Gated Parking

Bethwin Road,
London, SE5



Total area (approx.): 138.4 sq. m (1,489.7 sq. ft)