



## Wandsworth Road, SW8

£450 Per week

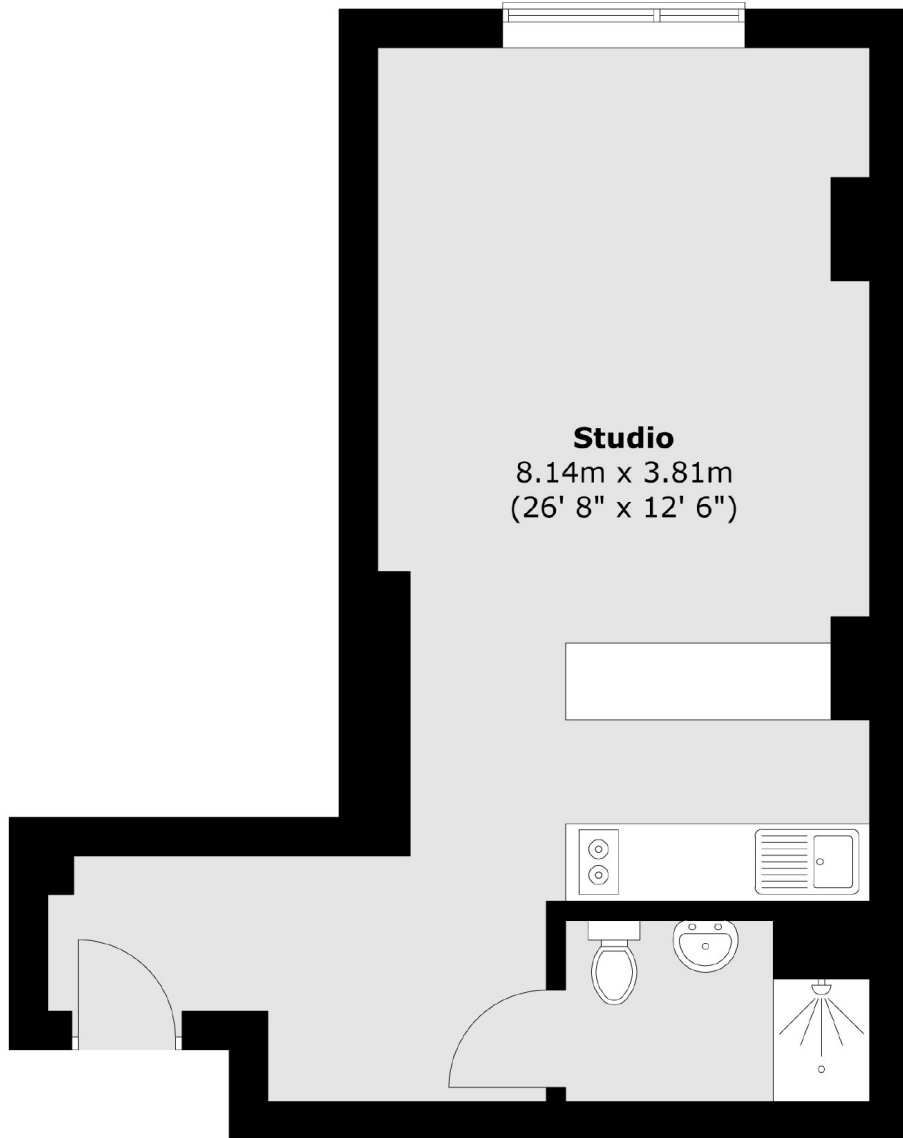
A spacious and well presented studio apartment set in the iconic St. George Wharf riverside development. The property offers a large studio room, fitted kitchen and tiled bathroom. Ideal for single professionals.

The property is located in this popular riverside complex which offers coffee shops, river side restaurants and grocery shops. Vauxhall train and underground stations are close by.

### Features

- Large Studio Apartment
- Fifth Floor Apartment
- Wood Floors Throughout
- Fitted Kitchen
- Tiled Bathroom
- Concierge

# Wandsworth Road, London, SW8



Total area (approx.) : 34.8 sq. m (374 sq. ft)