



Cormont Road, SE5

£577 Per week

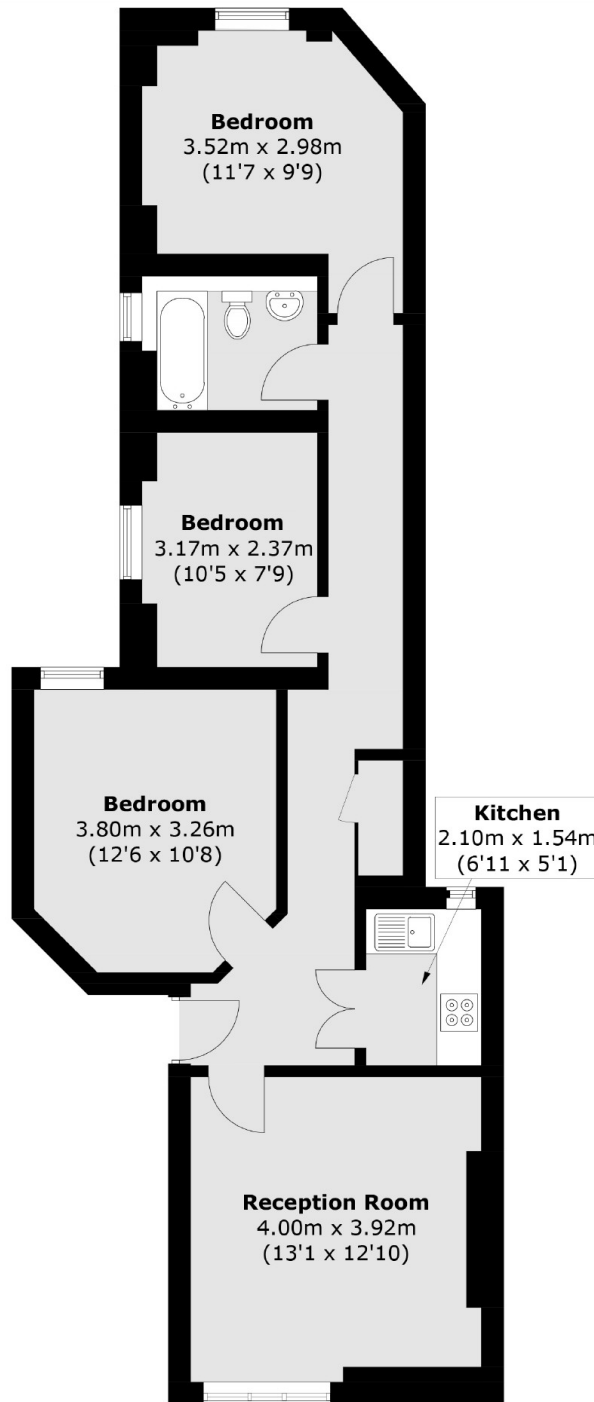
A well presented and spacious three bedroom second floor apartment ideally located across from Myatts Fields Park. The property offers a reception room, fitted kitchen, a tiled bathroom and wood floors throughout.

Cormont Road is well located with Myatts Fields Park positioned directly opposite the building. There are a number of local amenities nearby such as The Little Cat Cafe and The Crown & Anchor.

Features

Three Bedroom Apartment
Families and Couples Only
Victorian Mansion Block
Fitted Kitchen
Wooden Floors
Great Location
Myatts Fields Park

Cormont Road,
London, SE5



Total area (approx.): 71.4 sq. m (768.5 sq. ft)