



Royal Earlswood Park, Redhill

£2,550 Per Month





“ With flexible living across three floors, private outdoor space, and access to residents’ facilities, this home delivers on comfort and convenience. Whether you’re upsizing, relocating, or just looking for something turnkey — this property is ready to welcome its next chapter.





Redecorated, Spacious & Ready to Move In

This stylish four-bedroom townhouse offers a rare mix of modern design, flexible living space, and everyday convenience — all set within one of the area's most popular developments.

Finished with sleek contemporary interiors, the home spans three floors and suits both families and professional couples looking for space that works around their lifestyle.

On the Ground Floor:

A welcoming hallway leads to two bedrooms (ideal as guest rooms or a home office), a modern shower room, and a utility space with direct access to the garden — laid with artificial lawn and a smart decked patio for easy maintenance.

First Floor:

An open-plan living, kitchen, and dining area stretches the full width of the house. It's bright, versatile, and great for entertaining or quiet evenings in.

Top Floor:

Two double bedrooms, including the main with an en-suite shower room, and a family bathroom complete the upper level.

Additional Perks:

Access to on-site gym and pool

Private driveway parking

Short walk to local schools, shops, and green spaces

Need to know

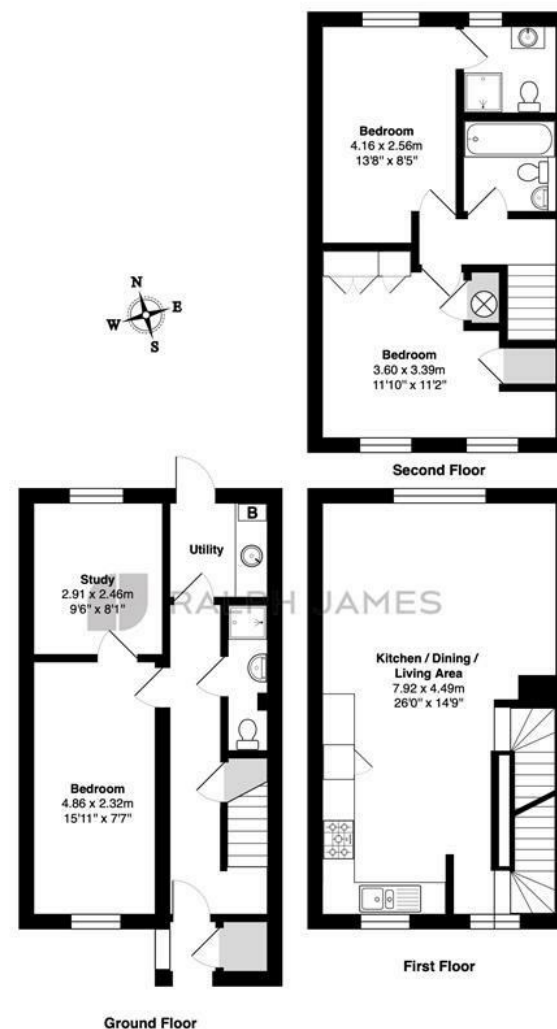
- Recently redecorated four-bedroom townhouse set over three floors
- Bright open-plan living, kitchen and dining area on the first floor
- Two double bedrooms on the top floor, including en-suite to main bedroom
- Ground floor includes a bedroom and offer space, shower room, and utility space
- Private rear garden with artificial lawn and decked patio
- Driveway parking directly in front of the property
- Residents' access to on-site gym and swimming pool
- Short walk to local schools, green spaces, and everyday amenities
- EPC: C
- Council: E

Interested?

redhill@ralphjames.co.uk
01737 765 555

1

ralphjames.co.uk



Royal Earlswood Park, Redhill

Total Area: 108.7 m² ... 1170 ft²

FOR ILLUSTRATIVE PURPOSES ONLY.

Whilst every attempt has been made to ensure the accuracy of the floor plan shown, all measurements, positioning, fixtures, features, fittings and any other data shown are an approximate interpretation for illustrative purposes only and are not to scale.

No responsibility is taken for any error, omission, miss-statement or use of data shown.

The above statement applies to both 'Still Moving London LTD' and the Company or individual displaying this floor plan.

Unauthorised reproduction prohibited.

© Still Moving London LTD (www.stillmoving.london)

RALPH JAMES