



# Sparrowsmead, Redhill

£3,000 Per Month







“

Ralph James presents a unique, spacious home between Redhill and Merstham with three bedrooms, three bathrooms, an open-plan kitchen, a landscaped garden, and two outhouses. Available fully furnished.

”



SOME BILLS INCLUDED - PLEASE DISCUSS WITH TEAM FOR MORE DETAILS

Ralph James is delighted to present this exceptional home to the Redhill lettings market. Nestled in a desirable estate, this spacious house is perfectly situated between Redhill and Merstham.

This newly constructed property boasts a unique charm and offers three generously sized double bedrooms and three bathrooms, including two with showers. The convenience of a ground-floor bathroom enhances the home's functionality. The principal bedroom is a standout feature, with an ensuite bathroom, Velux windows, and a pair of floor-to-ceiling double doors that invite the outdoors in on warm summer days. The second bedroom includes a cosy office nook and a mezzanine level, ideal for additional storage or a play area.

The open-plan kitchen is well-appointed and seamlessly blends into the living and dining areas, creating a cohesive and inviting space. It comes fully equipped with an island, white goods, ample storage, and plenty of surface space.

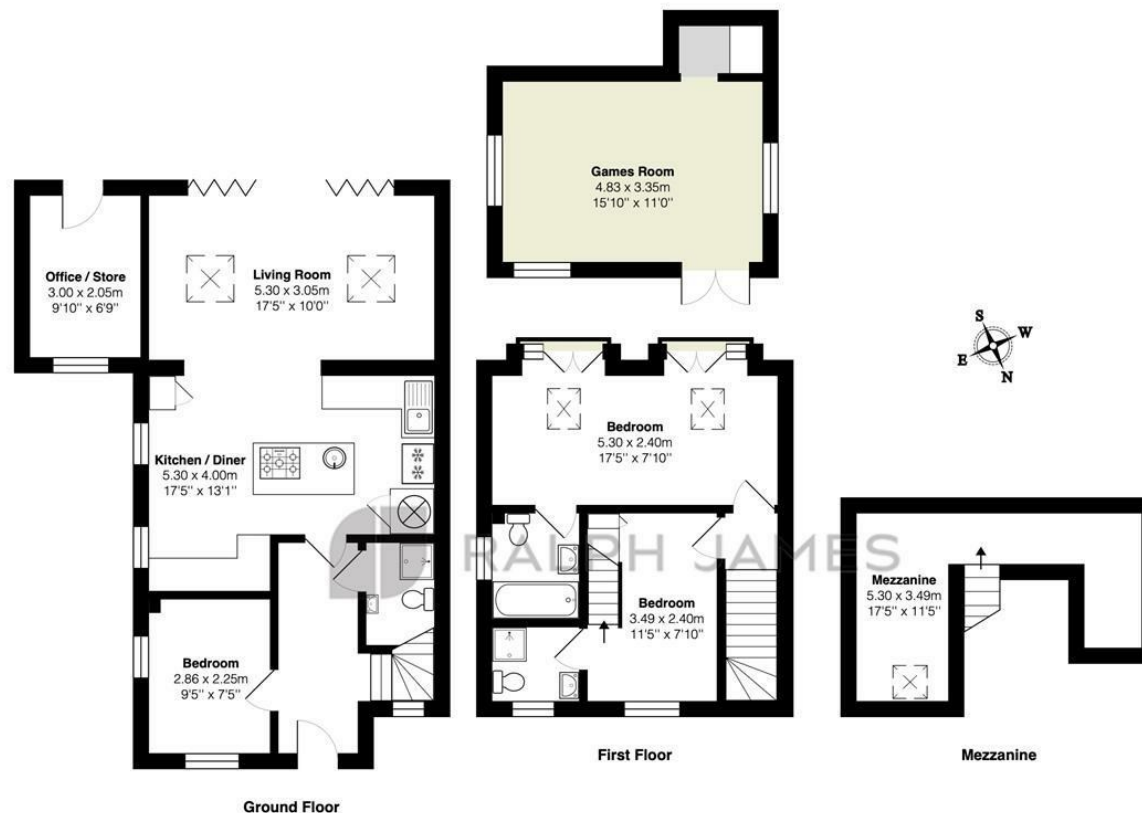
Outside, you'll find a beautifully landscaped garden featuring wood panelling, bamboo plants, paving, and a grassy area. There is also an impressive outhouse with power, perfect for a games room or office, and another outhouse that can be utilised as an additional office space or bike storage.

This unique property is ready for immediate occupancy and is available fully furnished as seen. Don't miss out on this exceptional opportunity in the Redhill and Merstham area!



## Need to know

- Ralph James presents a unique, spacious home
- Located between Redhill and Merstham in a desirable estate.
- Features three double bedrooms and three bathrooms.
- Principal bedroom with ensuite, Velux windows, and double doors.
- Second bedroom with office nook and mezzanine.
- Open-plan kitchen with white goods and ample storage.
- Landscaped garden with wood paneling, bamboo, paving, and grass.
- Two powered outhouses for games room or office use.
- EPC: B
- Council Tax: D



## Interested?

redhill@ralphjames.co.uk  
01737 765 555

1

ralphjames.co.uk

Sparrowsmead, Redhill  
Total Area: 122.1 m<sup>2</sup> ... 1314 ft<sup>2</sup>  
FOR ILLUSTRATIVE PURPOSES ONLY.

Whilst every attempt has been made to ensure the accuracy of the floor plan shown, all measurements, positioning, fixtures, features, fittings and any other data shown are an approximate interpretation for illustrative purposes only and are not to scale.

No responsibility is taken for any error, omission, miss-statement or use of data shown.

The above statement applies to both 'Still Moving London LTD' and the Company or individual displaying this floor plan.

Unauthorised reproduction prohibited.

© Still Moving London LTD (www.stillmoving.london)

 RALPH JAMES