

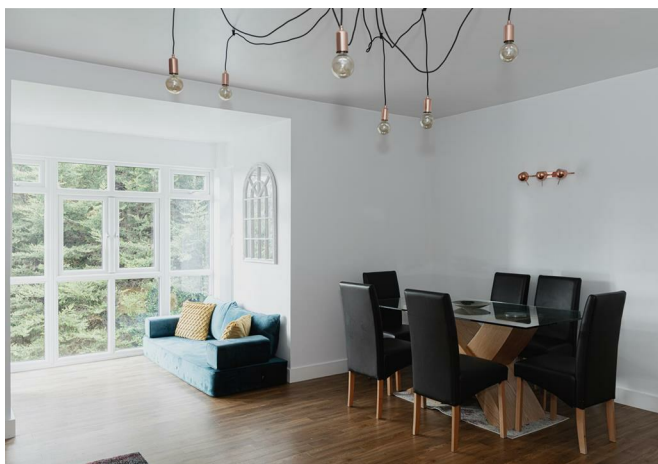


Doran Drive, Redhill

£380,000







Modern, light, and spacious two-bedroom flat in the sought-after Doran Drive Development. Featuring open-plan living, bay windows, built-in storage, two bathrooms, and access to communal gardens—perfect for relaxing or entertaining family and friends.







Tucked away at the end of a peaceful cul-de-sac that sits neatly on the border of Redhill and Reigate, this beautifully presented apartment offers an exceptional standard of living in a quiet yet well-connected location.

With two generously sized double bedrooms and two modern bathrooms, the layout is thoughtfully designed to maximise space and comfort. The open-plan kitchen and living area is flooded with natural light, with a charming bay window offering a pleasant outlook and a welcoming sense of home.

Offered to the market with no onward chain and share of freehold, the property is ideal for those seeking a smooth and stress-free move.

The internal finish is of a high standard throughout, allowing a new owner to move straight in and enjoy. Outside, the expansive communal garden provides an inviting green retreat for residents to unwind or socialise. This is a stylish and low-maintenance home in a highly desirable position, moments from the amenities and transport links of both Redhill and Reigate.





## Need to know

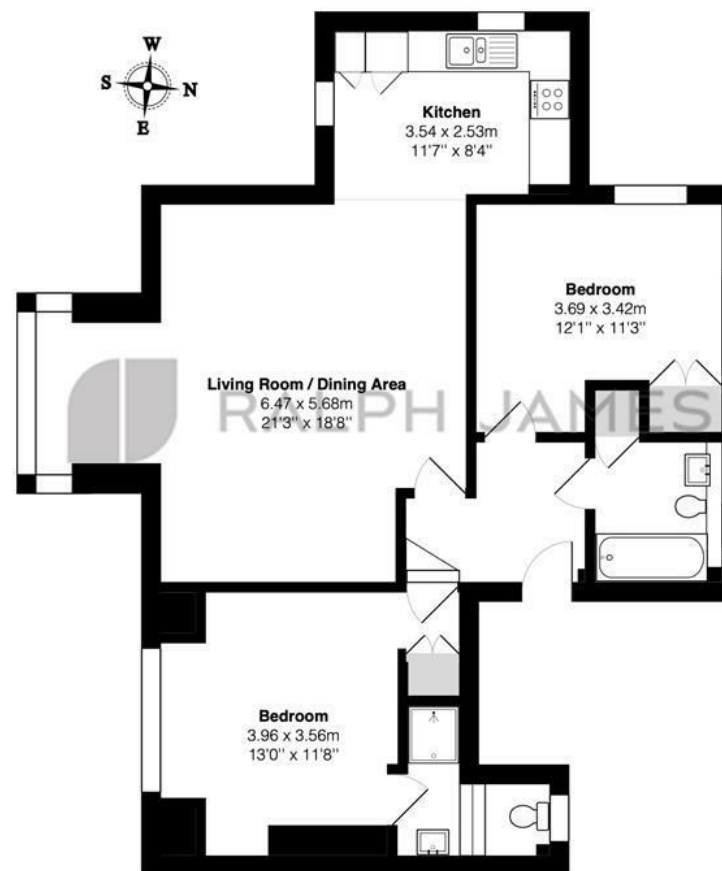
- Located on the top floor at the end of a peaceful cul-de-sac on the Redhill/Reigate border, offering both tranquillity and convenience.
- Two generously sized double bedrooms
- Bright and airy open-plan living space with a bay window that floods the room with natural light.
- Finished to a fantastic decorative standard throughout
- Share of freehold and being sold with no onward chain, providing a straightforward and appealing purchase.
- Two well-appointed bathrooms, including an en suite to the principal bedroom, for added comfort and privacy.
- Access to a large and well-maintained communal garden, perfect for relaxing or socialising in warmer months.
- The road enjoys a lovely community feel and even hosts an annual street party, adding to its charm.
- Service charge is circa £1,400 per annum, covering maintenance and communal areas.
- Ideally positioned for easy access to Redhill station, Reigate town centre, and local green spaces.

## Interested?

redhill@ralphjames.co.uk  
01737 765 555

1

ralphjames.co.uk



### Second Floor Flat

West Court, Doran Drive, Reigate

Total Area: 81.3 m<sup>2</sup> ... 875 ft<sup>2</sup>

FOR ILLUSTRATIVE PURPOSES ONLY.

Whilst every attempt has been made to ensure the accuracy of the floor plan shown, all measurements, positioning, fixtures, features, fittings and any other data shown are an approximate interpretation for illustrative purposes only and are not to scale.

No responsibility is taken for any error, omission, miss-statement or use of data shown.

The above statement applies to both 'Still Moving London LTD' and the Company or individual displaying this floor plan.

Unauthorised reproduction prohibited.

© Still Moving London LTD (www.stillmoving.london)

 RALPH JAMES