



Royal Earlswood Park, Redhill

£2,100 Per Month





Ralph James are ecstatic to present this wonderful period flat located in the prestigious Royal Earlswood Park to the Redhill Lettings Market.

As a resident of Royal Earlswood Park, you benefit from the use of the Pool and Gym in the converted chapel. This is where you will also find site reception. The grounds are plentiful with a pond at the front drive and a pond at the back orchard.

The flat comes furnished and has two private parking spaces.





****ELECTRICITY BILL INCLUDED IN RENT****

Perfect for Airport or East Surrey Hospital staff, Ralph James are ecstatic to present this wonderfully period flat located in the prestigious Royal Earlswood Park to the Redhill Lettings Market.

Situated on the ground floor, this flat boasts a larger floorplan than most two beds on the market with 13ft ceilings creating a grand and light space throughout. The flat features two great-sized double bedrooms with one ensuite off of the principal bedroom - there is a family bathroom leading off of the hallway.

The kitchen is modern with white good staples included such as fridge/freezer, oven/hob, and dishwasher. The washing machine and dryer are separate in the utility toilet tucked away off of the hallway.

The living room and dining room are a more than generous size with two large windows with a set of double doors leading out directly to the private grounds - perfect for a table and chairs.

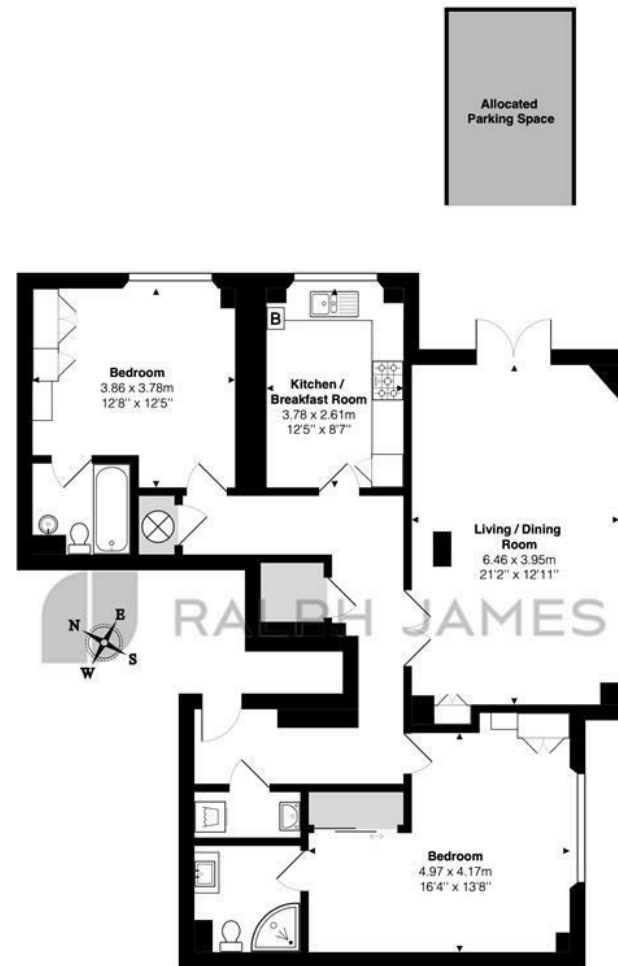
As a resident of Royal Earlswood Park, you benefit from the use of the Pool and Gym in the converted chapel. This is where you will also find site reception. The grounds are plentiful with a pond at the front drive and a pond at the back orchard.

The flat comes furnished and has two private parking spaces.

NOTE: Electricity bills included in rent

Need to know

- Period conversion
- Ground floor
- Two large double bedrooms
- Built in wardrobes
- Furnished and white goods included
- Two parking spaces
- Ensuite
- Gym & pool
- EPC: D
- Council Tax: E



Ground Floor

Edward House, Royal Earlswood Park, Redhill

Total Area: 101.0 m² ... 1087 ft² (excluding allocated parking space)

FOR ILLUSTRATIVE PURPOSES ONLY.

Whilst every attempt has been made to ensure the accuracy of the floor plan shown, all measurements, positioning, fixtures, features, fittings and any other data shown are an approximate interpretation for illustrative purposes only and are not to scale.

No responsibility is taken for any error, omission, miss-statement or use of data shown.

The above statement applies to both 'Still Moving London LTD' and the Company or individual displaying this floor plan.

Unauthorised reproduction prohibited.

© Still Moving London LTD (www.stillmoving.london)

 RALPH JAMES

Interested?

redhill@ralphjames.co.uk
01737 765 555

1

ralphjames.co.uk