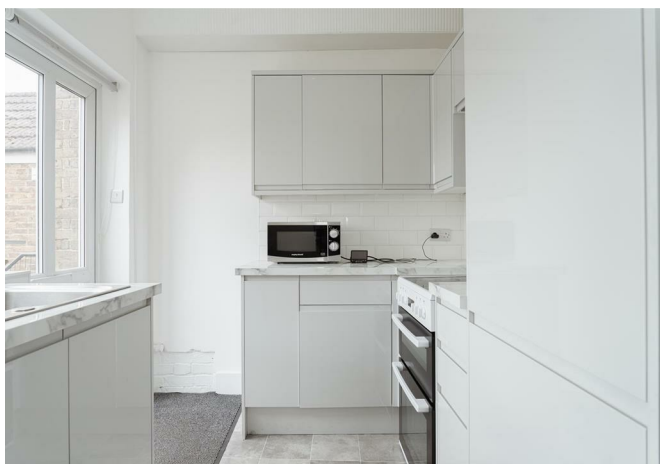




Nutfield Road, Merstham

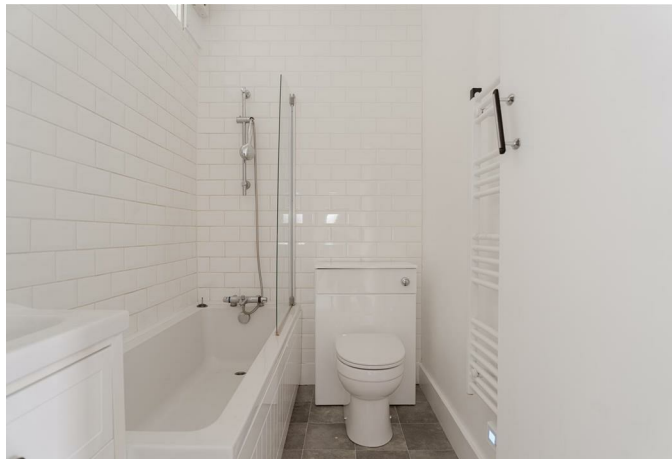
£1,250 Per Month





One-bedroom flat is just 0.5 miles from Merstham station. It features a modern kitchen, sleek bathroom, spacious double bedroom, and carpeted living areas. With local amenities nearby, it offers excellent transport links to London, Gatwick, and Brighton.





Stylish, newly refurbished and ready to move into – this spacious one-bedroom apartment is just 0.5 miles from Merstham station, making it ideal for commuters and first-time renters alike.

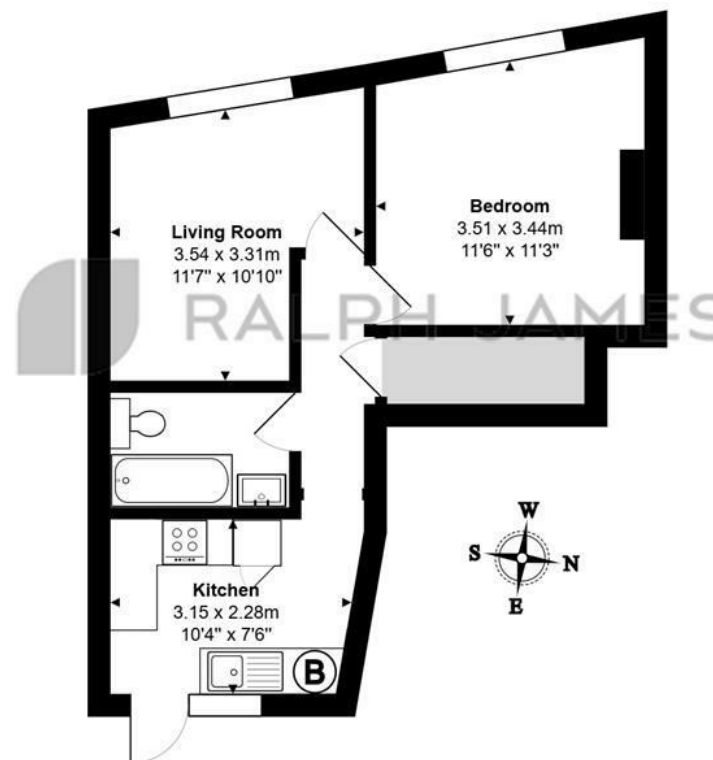
Finished to a superb standard throughout, the apartment features soft new carpeting in the living areas, a sleek, brand-new kitchen with integrated appliances, and a beautifully fitted bathroom with contemporary fixtures.

The double bedroom offers generous proportions, with enough space for a double bed, wardrobes, and even a work-from-home setup if needed.

Situated in a well-connected location, you'll benefit from a variety of local amenities right on your doorstep, with excellent transport links to London, Gatwick, and Brighton just a short walk away.

Need to know

- Situated just 0.5 miles from Merstham station for easy commuting.
- Finished to a high standard with modern updates throughout.
- Carpeted spaces for a cosy feel.
- Stylish fitted appliances.
- Fully equipped and beautifully finished.
- Ample room for a double bed, wardrobes, and a potential home office.
- Shops and essentials just moments away.
- Quick access to London, Gatwick, and Brighton.
- EPC: D
- Council: B



First Floor Maisonette

Nutfield Road, Merstham, Redhill

Total Area: 40.5 m² ... 436 ft²

FOR ILLUSTRATIVE PURPOSES ONLY.

All measurements are approximate and for display purposes only

Whilst every attempt has been made to ensure the accuracy of the floor plan shown, all measurements, positioning, fixtures, features, fittings and any other data shown are an approximate interpretation for illustrative purposes only and are not to scale.

No responsibility is taken for any error, omission, miss-statement or use of data shown.

The above statement applies to both 'Still Moving London LTD' and the Company or individual displaying this floor plan.

Unauthorised reproduction prohibited.

© Still Moving London LTD (www.stillmoving.london)

Interested?

redhill@ralphjames.co.uk
01737 765 555

1

ralphjames.co.uk

 RALPH JAMES