



Royal Earlswood Park, Redhill

£1,800 Per Month





“

“I have thoroughly enjoyed living in the development for the last couple of years. The spacious landscaped grounds, surrounding areas for lovely walks, secret orchard (plenty of apples) have been enjoyed by friends, family and me. The apartment, one of two on this side of the building, has its own (huge) front door and a lovely south facing garden area which I have used to grow veg and herbs. You would be close to all conveniences - gym, schools, hospitals, shops, town centre, train station - but yet feel like you are tucked away in an oasis of calm.”

”



Ralph James are ecstatic to present to the Redhill lettings market this well loved flat. Care and thought has gone into the design and décor of this home to create a warm and welcoming space throughout. Leaving your shoes in the spacious hallway, you step through the elegant double doors and enter the open plan living/dining area. Large windows let in plenty of natural light, this mixed with the high ceilings create an open feel. From here you have access to the second bedroom that could also be used as a nursery, snug, or the work from home office with its own en-suite. There is also a separate W/C down the hall.

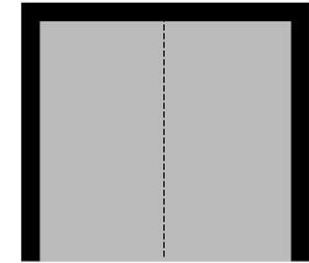
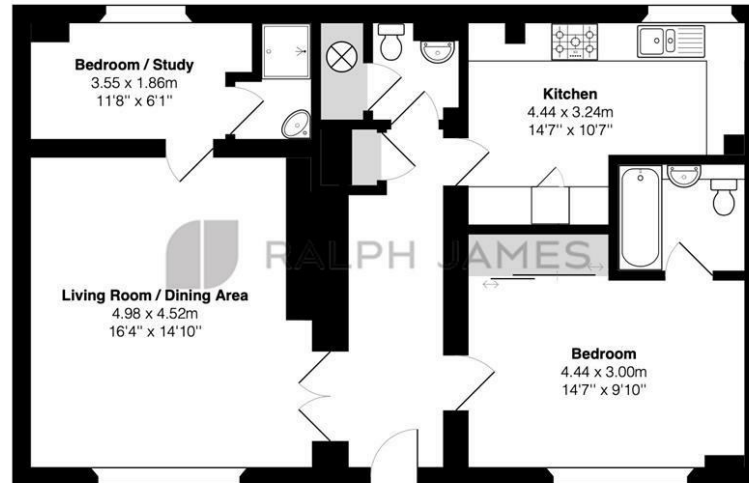
The kitchen is at the end of the hall and is a great space for any budding chef with white goods included and, plenty of cupboard space.

The bedroom is an excellent size. The large windows offer views of the pretty greenery outside, there are large floor-to-ceiling wardrobes with sliding mirror doors and an en-suite with a bathtub, overhead shower, and built-in cupboards.



Need to know

- Two bed maisonette
- Ground floor
- Incredibly high ceilings
- Private parking
- Spacious kitchen
- Two bathrooms
- Communal grounds
- Swimming pool & gym
- EPC: C
- Council tax: D



Two Allocated Parking Spaces

Ground Floor Maisonette

Edward House, Royal Earlswood Park, Redhill

Total Area: 81.9 m² ... 882 ft²

FOR ILLUSTRATIVE PURPOSES ONLY.

Whilst every attempt has been made to ensure the accuracy of the floor plan shown, all measurements, positioning, fixtures, features, fittings and any other data shown are an approximate interpretation for illustrative purposes only and are not to scale.

No responsibility is taken for any error, omission, miss-statement or use of data shown.

The above statement applies to both 'Still Moving London LTD' and the Company or individual displaying this floor plan.

Unauthorised reproduction prohibited.

© Still Moving London LTD (www.stillmoving.london)



Interested?

redhill@ralphjames.co.uk
01737 765 555

1

ralphjames.co.uk