



Westview Close, Redhill

£300,000





“

This property will have a special place in our hearts. The beautiful Earlswood lakes on your doorstep is perfect for a peaceful evening walk and picnic in the Summer. Not to mention our regular Saturday morning stroll into Reigate for a coffee and pastry. Having our own personal parking spaces directly outside the flat has been especially convenient too. It really is a lovely and easy place to live.

”



Within this very desired and sought after location lies Mercer House. A beautiful converted block of apartments, surrounded by friendly neighbours in a quiet tree lined cul-de-sac. The location is extremely convenient for all purposes, including chilled evenings in the garden overlooking Earlswood Common.

This spacious ground floor apartment benefits from two generous bedrooms, a sought after open plan kitchen/living and dining room and one family bathroom. This home has been loved and cared for by our clients so you can enjoy the luxury feeling of moving right in with no work required.

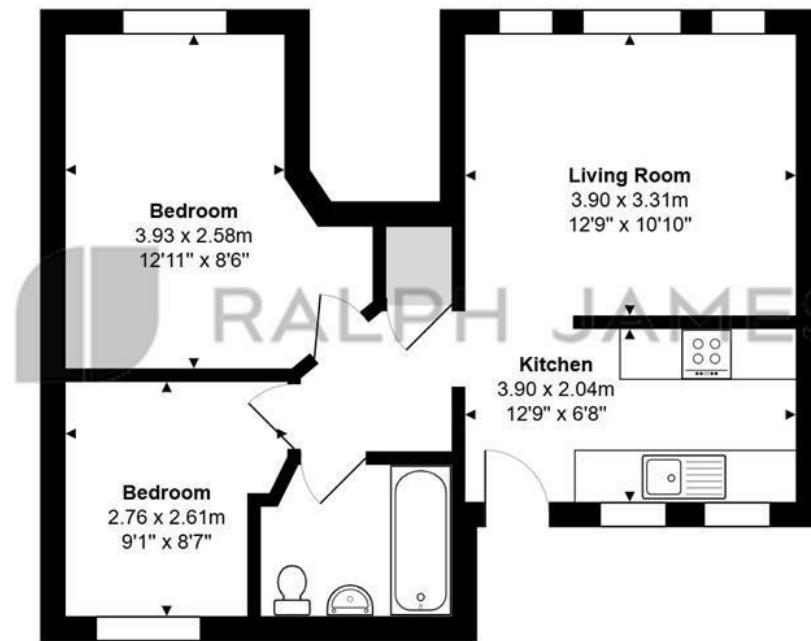
Being situated in the middle of Redhill and Reigate, You have the ease of popping into town for shopping, Commuting to work via train or heading to the motorway for travels, you also can benefit from taking a Sunday hike up some of Surrey's most prestigious hills as you've got it all right on your doorstep.

Externally, whilst stepping out from your private front door, you enter the peaceful garden that you don't often find with apartments. Allocated parking and further visitor bays, this property really has it all and is not one to miss.



Need to know

- Ground floor apartment
- Two generous bedrooms
- Share of Freehold
- Allocated parking and further visitor parking
- Private front door access
- Communal gardens
- Beautifully presented throughout
- Short walk to Redhill and Reigate town centres
- Flooded with natural light throughout
- Located on the doorstep of beautiful walk routes



Mercer House, Westview Close, Redhill

Total Area: 48.8 m² ... 526 ft²

FOR ILLUSTRATIVE PURPOSES ONLY.

Whilst every attempt has been made to ensure the accuracy of the floor plan shown, all measurements, positioning, fixtures, features, fittings and any other data shown are an approximate interpretation for illustrative purposes only and are not to scale.

No responsibility is taken for any error, omission, miss-statement or use of data shown.

The above statement applies to both 'Still Moving London LTD' and the Company or individual displaying this floor plan.

Unauthorised reproduction prohibited.

© Still Moving London LTD (www.stillmoving.london)



Interested?

redhill@ralphjames.co.uk
01737 765 555

ralphjames.co.uk