



Marketfield Way, Redhill

£1,400 Per Month

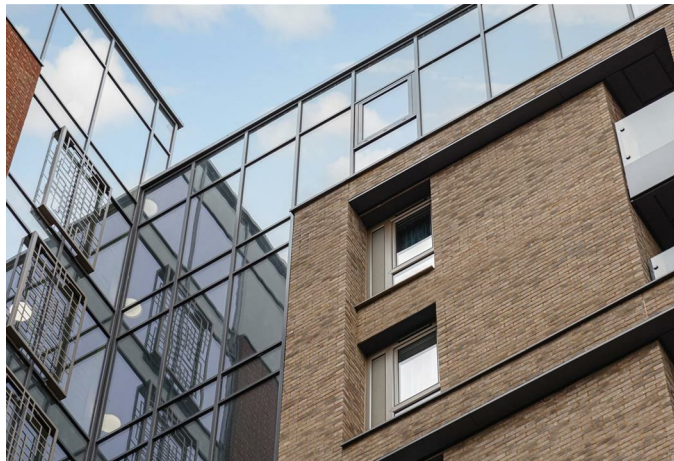




“

This one-bedroom flat in Redhill's sought-after Picturehouse development offers modern open-plan living, a private balcony, built-in storage, and a sleek bathroom. Ideally located beside Redhill Station, it's perfect for commuters seeking convenience and a contemporary lifestyle.

”



Ralph James is thrilled to present this fantastic one-bedroom flat in the sought-after Picturehouse development, ideally positioned right beside Redhill Station, offering an unbeatable location for commuters and easy access to local amenities.

This bright, spacious flat has a well-designed layout that maximises every inch of space. Upon entering, you'll find a practical hallway with built-in storage, perfect for keeping your home tidy and organised. The main living area is open-plan, combining a well-equipped kitchen with modern appliances and ample cupboard space, alongside a cosy living space ideal for relaxing or entertaining. Large windows fill the room with natural light, and doors open to a private balcony, perfect for alfresco dining or enjoying fresh air on warm days.

The bedroom is generously sized and includes a built-in wardrobe for convenient storage. Large windows create a bright, airy atmosphere, making it a restful retreat. The modern bathroom offers both a bath and shower, with sleek, clean finishes for a contemporary feel.

This is a fantastic opportunity to enjoy a modern lifestyle in one of Redhill's most popular developments.



Need to know

- Situated in the sought-after Picturehouse development, right beside Redhill Station, perfect for commuters.
- Offers stunning views and a well-designed layout to maximise space.
- Features a modern kitchen with appliances, ample storage, and a cosy living area.
- Accessible from the living area, ideal for alfresco dining or relaxing outdoors.
- Includes a built-in wardrobe and large windows for a bright, airy feel.
- Equipped with both a bath and shower, featuring sleek, modern finishes.
- Practical hallway storage helps keep the home tidy and organised.
- Enjoy a contemporary lifestyle in one of Redhill's most desirable developments.
- EPC: B
- Council: C



Fourth Floor

Picture House, Marketfield Way, Redhill

Total Area: 52.4 m² ... 564 ft² (excluding balcony)

FOR ILLUSTRATIVE PURPOSES ONLY.

Whilst every attempt has been made to ensure the accuracy of the floor plan shown, all measurements, positioning, fixtures, features, fittings and any other data shown are an approximate interpretation for illustrative purposes only and are not to scale.

No responsibility is taken for any error, omission, miss-statement or use of data shown.

The above statement applies to both 'Still Moving London LTD' and the Company or individual displaying this floor plan.

Unauthorised reproduction prohibited.

© Still Moving London LTD (www.stillmoving.london)



Interested?

redhill@ralphjames.co.uk
01737 765 555

ralphjames.co.uk