



# Woodfield Close, Redhill

Guide Price £700,000 - £750,000







We've been living in number 10 for over twenty years and it's been a fantastic family home for all six of us. Our kids are now all grown, and fled the nest, so now it's time to let another family enjoy our home as we have. One of my favourite things about my home is how versatile it is. From the small cosy snug to the large open family room and spacious kitchen, opening up to the patio and garden.







Guide Price £700,000 - £750,000

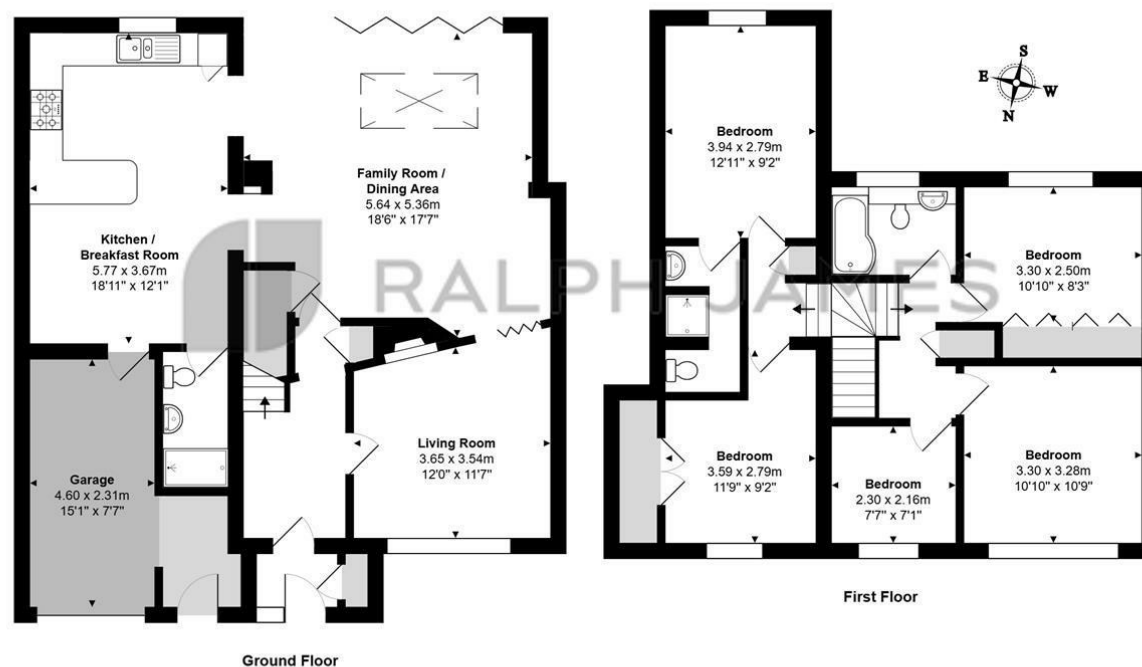
This beautifully extended five-bedroom, three-bathroom semi-detached home, built around 1961, is nestled in a quiet cul-de-sac on the borders of Redhill and Reigate, offering both privacy and convenience. Upon entering, a bright and airy hallway welcomes you into the home, leading to a cozy snug living room on the right, complete with a stylish gas fireplace. The living room features concertina doors that can open seamlessly into the expansive kitchen, dining, and living area, creating a perfect space for entertaining or family gatherings. This open-plan area benefits from bifold doors that lead out to a beautifully landscaped, south-facing garden, filling the space with natural light and providing an effortless indoor-outdoor flow.

The home has undergone a double-story extension, which on the ground floor includes a spacious shower room, garage, and the modern, well-appointed kitchen. Upstairs, you'll find four generous double bedrooms and a comfortable single bedroom. One of the bedrooms boasts an en suite, while the remaining rooms are served by a stylish family bathroom. The entire property is tastefully decorated, adding to its inviting ambiance and ready-to-move-in appeal. With fantastic local schools within the catchment area, nature walks nearby, and Redhill train station within walking distance, this home offers direct links into London and Gatwick, making it an ideal choice for families and commuters alike.



## Need to know

- This extended five-bedroom, three-bathroom semi-detached home was built around 1961 and sits in a peaceful cul-de-sac between Redhill and Reigate.
- The entrance hallway is bright and airy, creating a welcoming atmosphere upon arrival.
- A cozy snug living room with a gas fireplace is situated to the right of the hallway.
- Concertina doors open the snug room to a large, extended kitchen, dining, and living area, perfect for entertaining.
- Bifold doors in the open-plan space lead to a landscaped, south-facing garden, allowing an indoor-outdoor flow.
- A double-story extension includes a ground-floor shower room, garage, and fitted kitchen.
- Upstairs, there are four double bedrooms and one single bedroom, all spacious and well-appointed.
- One bedroom includes an en suite, while the remaining rooms are served by a stylish family bathroom.
- The home is in good decorative order, creating a comfortable, ready-to-move-in environment.
- Conveniently located for local schools, nature walks, and walking distance to Redhill station, with direct links to London and Gatwick.



Woodfield Close, Redhill  
Total Area: 167.0 m<sup>2</sup> ... 1798 ft<sup>2</sup>  
FOR ILLUSTRATIVE PURPOSES ONLY.

Whilst every attempt has been made to ensure the accuracy of the floor plan shown, all measurements, positioning, fixtures, features, fittings and any other data shown are an approximate interpretation for illustrative purposes only and are not to scale.

No responsibility is taken for any error, omission, mis-statement or use of data shown.

The above statement applies to both 'Still Moving London LTD' and the Company or individual displaying this floor plan.

Unauthorised reproduction prohibited.

© Still Moving London LTD (www.stillmoving.london)

## Interested?

redhill@ralphjames.co.uk  
01737 765 555

ralphjames.co.uk

