



Woodlands Road, Redhill

£600,000





“

A beautifully presented and completely modernised home. Finished with high quality fitted appliances and sold with no onwards chain.

”



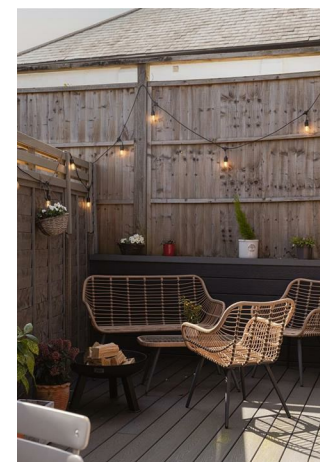
Beautifully positioned in a popular residential road, this immaculate 3-bedroom detached home offers contemporary living at its finest and is being sold with no onwads chain.

The heart of the home is the stunning open-plan kitchen and living area, designed for modern lifestyles. The kitchen features luxurious quartz worktops, a central island, and high-quality appliances, perfect for both everyday use and entertaining. The living area, while open plan, has clearly defined zones for dining, lounging, and hosting, with bifolding doors that seamlessly connect the indoors to a decked terrace—ideal for alfresco dining or relaxing.

The ground floor comprises two spacious double bedrooms, both served by a stylish family bathroom. Upstairs, the principal bedroom enjoys its own private en suite, creating a perfect haven of comfort.

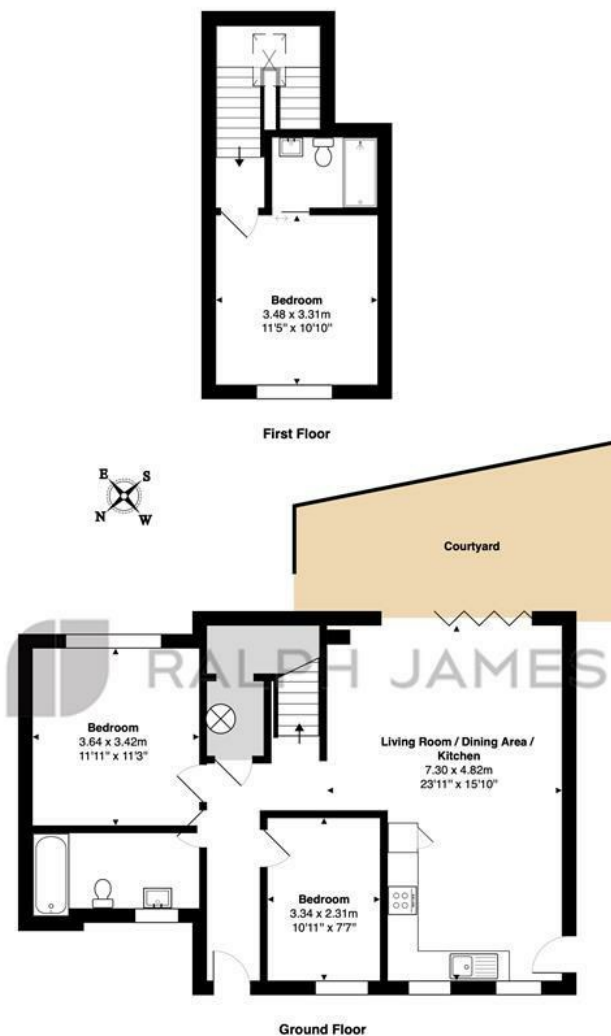
Finished to an impeccable standard, this home benefits from underfloor heating throughout for added comfort. Outside, the property boasts a private, Secure landscaped garden off the kitchen and a driveway with room for three vehicles, framed by elegant black metal railings that offer both privacy and kerb appeal.

This beautifully finished property is ready for you to move straight in and enjoy modern living in an enviable location.



Need to know

- Immaculate 3-bedroom detached home with no onward chain.
- Open-plan kitchen with central island and quartz countertops.
- Bifolding doors open to a decked terrace for outdoor entertaining.
- Two double bedrooms on the ground floor with a modern family bathroom.
- Principal bedroom upstairs with a private en suite bathroom.
- Underfloor heating throughout for year-round comfort.
- Driveway with space for three cars, secured by black metal railings.
- Stylish, move-in-ready home in a prime Woodlands Road location.
- Short walk away from Earlswood station with direct links into London & Gatwick
- Sun trapped terrace and newly planted landscaped garden



Interested?

redhill@ralphjames.co.uk
01737 765 555

ralphjames.co.uk

Woodlands Road, Redhill

FOR ILLUSTRATIVE PURPOSES ONLY.

Whilst every attempt has been made to ensure the accuracy of the floor plan shown, all measurements, positioning, fixtures, features, fittings and any other data shown are an approximate interpretation for illustrative purposes only and are not to scale.

No responsibility is taken for any error, omission, mis-statement or use of data shown.

The above statement applies to both 'Still Moving London LTD' and the Company or individual displaying this floor plan.

Unauthorised reproduction prohibited.

© Still Moving London LTD (www.stillmoving.london)

 RALPH JAMES