



Oakley Gardens, Merstham

£625,000

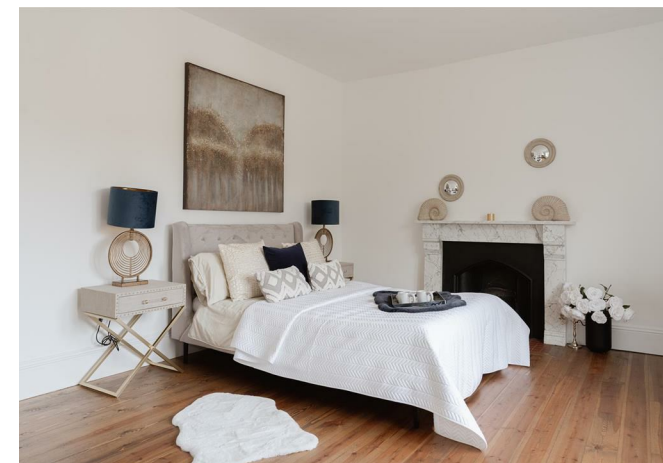




“

Oakley Gardens is a beautiful gated development, surrounding a Grade II listed Manor House, nestled in the rolling Surrey hills with stunning countryside views. Flooded with natural light and delightful to walk around, we highly recommend viewing this astonishing duplex apartment

”



**** STAMP DUTY PAID FOR ****

On the edge of Merstham, nestled against the Surrey Hills, is this exquisite development, converted in 2023 by Dion Homes. The Grade II listed Manor House presents beautifully, with traditional architecture and stunning detailing. A listed bell tower juts from the roof, and inside, the entrance hall and stairwell are spectacular.

This duplex apartment is no exception. Spanning the first and second floors, and boasting two receptions (one of which could be used as a bedroom) as well as two large bedrooms upstairs, this apartment feels more like a house within the Manor. Retaining character features such as fireplaces and ornate coving, the conversions have been done sympathetically, blending the old with new.

The modern kitchen is classic in design, with shaker doors and gnarled handles. A separate reception room offers an ideal dining space, but is versatile in its design. A dual-aspect living room is flooded with natural light, and houses a period fireplace. The bathrooms are beautifully presented, with intricate tiling, white sanitary ware and complementary hardware.

Oakley Gardens as we know it today, was built in 1866 on the former Oakley Farm by the prestigious Pelly family. Step into a luxury living space that binds the past with the future to present an opportunity of sublime modern living.

Need to know

- Nestled in Oakley Gardens, this split-level apartment combines timeless charm with modern luxury.
- A collection of 8 luxury converted apartments.
- This three-bedroom home offers bright, spacious interiors across two floors.
- Set in a gated Grade II Manor House, it enjoys two acres of private parkland and stunning views.
- The double bedrooms are designed for comfort and privacy.
- Period features like fireplaces and beams blend beautifully with modern updates.
- The kitchen shines with Bosch appliances, quartz surfaces, and elegant finishes.
- 35 minutes via train to London Victoria and London Bridge, and just 16 minutes to Gatwick Airport.
- Luxury bathrooms feature bespoke vanities, heated towel rails, and Minoli tiles.
- Residents enjoy gated entrance, two allocated parking spaces, communal gardens, and secure estate-wide CCTV.



Ground Floor

First Floor

Oakley Gardens, Merstham, Redhill

Total Area: 130.0 m² ... 1400 ft²

FOR ILLUSTRATIVE PURPOSES ONLY.

Whilst every attempt has been made to ensure the accuracy of the floor plan shown, all measurements, positioning, fixtures, features, fittings and any other data shown are an approximate interpretation for illustrative purposes only and are not to scale.

No responsibility is taken for any error, omission, miss-statement or use of data shown.

The above statement applies to both 'Still Moving London LTD' and the Company or individual displaying this floor plan.

Unauthorised reproduction prohibited.

Â© Still Moving London LTD (www.stillmoving.london)

Interested?

redhill@ralphjames.co.uk
01737 765 555

ralphjames.co.uk