



Mid Street, South Nutfield

£825,000





“

We have loved living in South Nutfield with miles of beautiful countryside walks and easy access to London. As an old bakery the house is full of character and historical features, with plenty of space making it a real gem for hosting family and friends and an excellent base to work from home.

”



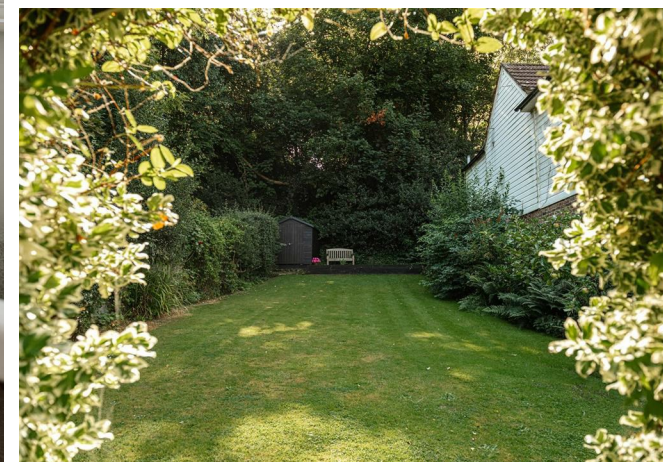
Nestled in the charming village of South Nutfield, this enchanting five double-bedroom detached house offers a rare blend of historic character and modern living. Originally built around 130 years ago, this unique property was once the village bakery and still retains a wealth of its original features, including the central bread oven doors, internal shop signage, and bakers' peels—lending a unique touch of history and nostalgia to this beautiful home. The current owners have cherished the property for nearly 18 years, preserving its timeless charm while updating it for modern comfort.

At the heart of the home is a spacious open-plan kitchen and dining area, complete with a central island—a perfect space for entertaining or family gatherings. A stunning vaulted ceiling conservatory adds another dimension to the dining area, bathing the space in natural light and offering pleasant views over the bricked patio and seating area.

The house boasts two generously sized reception rooms, one positioned at the front and the other at the rear. The rear reception room is located adjacent to a convenient downstairs shower room and features a staircase that leads to a cozy bedroom with French doors opening onto the garden and adjacent to a private balcony. This layout is ideal for extended family or guests seeking their own space and privacy.

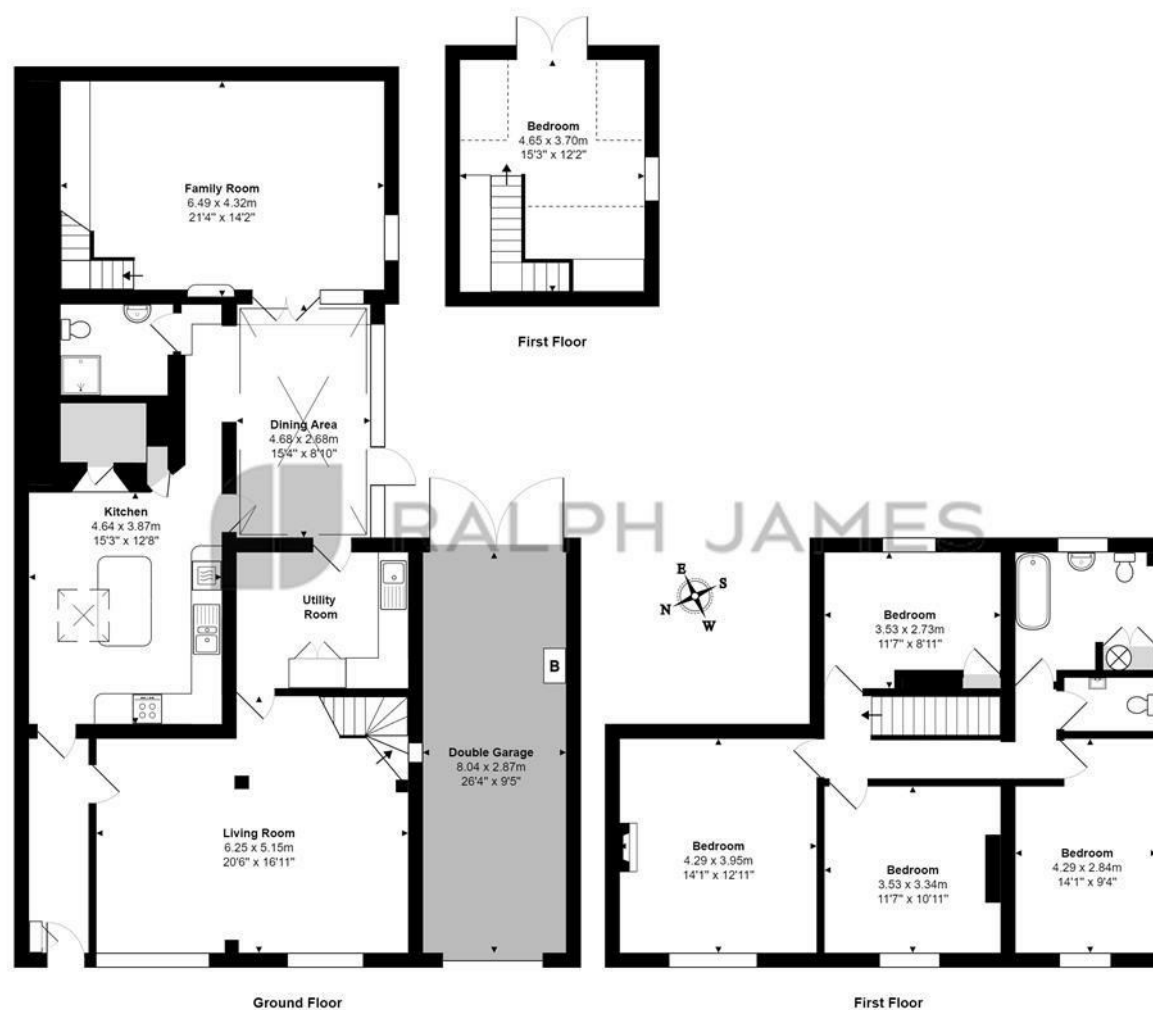
Upstairs, the family bathroom is a delightful retreat, featuring a traditional rolltop bath, ideal for unwinding after a long day. The home is complete with a double-length garage to the side, offering ample storage or workshop space.

The exterior of the property is just as impressive. The rear garden, which is South-East facing, enjoys long hours of sunlight and is perfect for outdoor entertaining, gardening, or simply relaxing in nature. The garden backs onto open fields and woodland, creating a tranquil and serene setting. With nature walks right at your doorstep, the property is a haven for lovers of the outdoors.



Need to know

- Historic five double-bedroom detached house, originally the village bakery, built circa 130 years ago
- Retains original bakery features, including bread oven doors, shop signage, and bakers' peels
- Spacious open-plan kitchen and dining area with a central island, ideal for entertaining
- Vaulted ceiling conservatory floods the home with natural light and offers garden views
- Two generous reception rooms, one leading to a bedroom with French doors to a private terrace
- Family bathroom upstairs with a traditional rolltop bath for a touch of luxury
- Downstairs shower room adjacent to a flexible reception and bedroom space, perfect for guests or extended family
- Double-length garage provides ample storage and workspace options
- Expansive south-east facing garden, perfect for enjoying sunshine and outdoor living
- Located in the picturesque village of South Nutfield, with nature walks and London commuter links close by



Interested?

redhill@ralphjames.co.uk
01737 765 555

ralphjames.co.uk

Mid Street, South Nutfield
Total Area: 240.9 m² ... 2594 ft²
FOR ILLUSTRATIVE PURPOSES ONLY.

Whilst every attempt has been made to ensure the accuracy of the floor plan shown, all measurements, positioning, fixtures, features, fittings and any other data shown are an approximate interpretation for illustrative purposes only and are not to scale.

No responsibility is taken for any error, omission, mis-statement or use of data shown.

The above statement applies to both 'Still Moving London LTD' and the Company or individual displaying this floor plan.

Unauthorised reproduction prohibited.

© Still Moving London LTD (www.stillmoving.london)

 RALPH JAMES