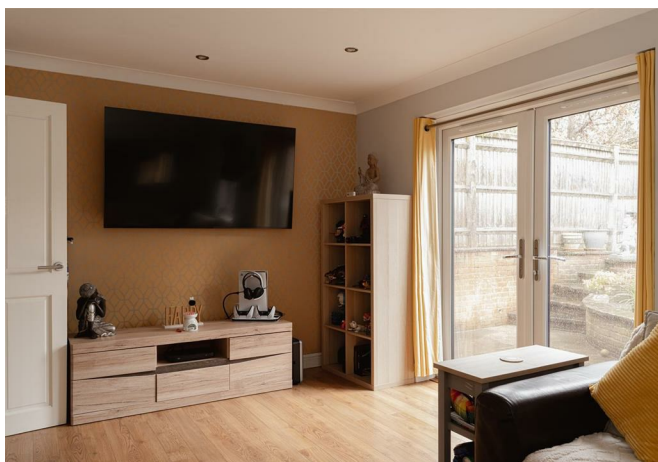




Knighton Road, Redhill

£500,000





“

A beautiful three bedroom home situated in the heart of Earlswood.

”



GUIDE PRICE £500,000 - £525,000

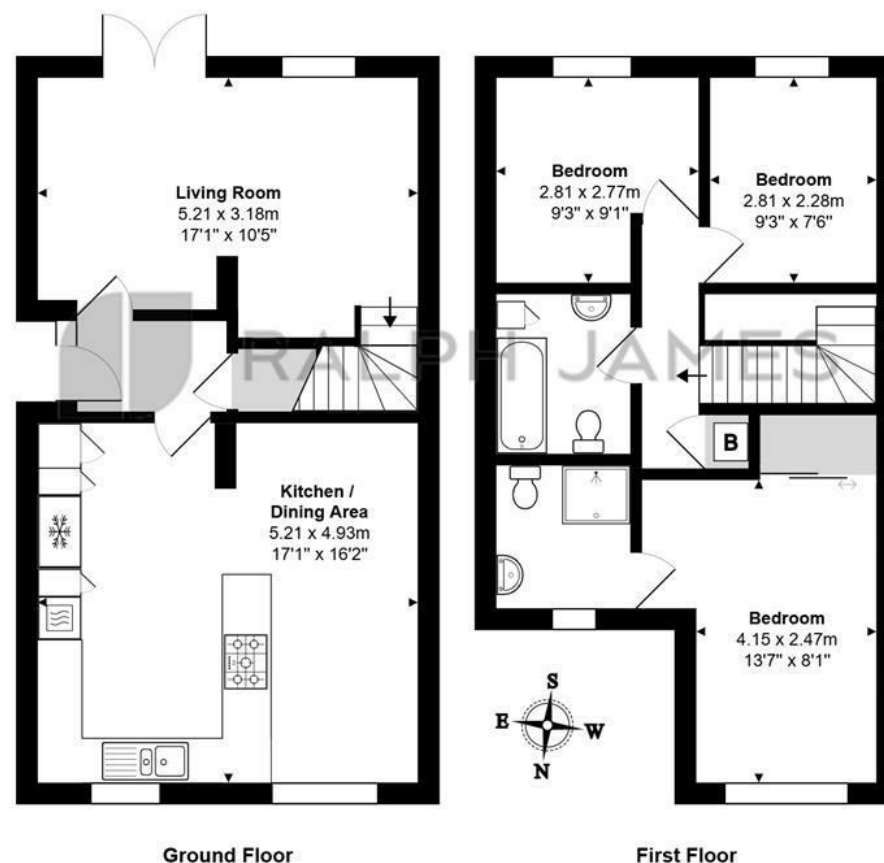
This stunning three bedroom semi-detached family home is located in a highly desirable area, within outstanding school catchments and close to both Earlswood and Redhill train stations, making it ideal for commuters. The property is also within easy reach of Reigate town centre which offers fantastic local amenities and is situated on the doorstep of lovely scenic walks, offering a perfect balance of convenience and nature.

The home is presented in fantastic condition, featuring a spacious open-plan kitchen/dining area, perfect for modern family living and entertaining. A separate lounge at the rear overlooks the beautiful garden, providing a peaceful space to settle down and relax with complete privacy. Upstairs, the principal bedroom benefits from its own en suite, while the two additional bedrooms are well-served by the main family bathroom.

The property also includes a driveway with space for two cars and ample free road parking is available nearby. With its excellent location, high-quality finish, and family-friendly layout, this home is an exceptional find and is not to be missed.

Need to know

- Beautifully presented three bedroom semi detached family home
- In the heart of a fantastic school catchment area
- Spacious open plan kitchen/dining room which makes for the perfect entertaining spot.
- Driveway with space for two vehicles with further parking on offer
- Separate reception room to settle down and relax for quality family time
- Principal bedroom features an en suite, with two further well-sized bedrooms
- Located just a short walk to Earlswood station with direct links into London
- South facing garden with a real sense of privacy



Knighton Road, Redhill

Total Area: 93.4 m² ... 1005 ft²

FOR ILLUSTRATIVE PURPOSES ONLY.

Whilst every attempt has been made to ensure the accuracy of the floor plan shown, all measurements, positioning, fixtures, features, fittings and any other data shown are an approximate interpretation for illustrative purposes only and are not to scale.

No responsibility is taken for any error, omission, miss-statement or use of data shown.

The above statement applies to both 'Still Moving London LTD' and the Company or individual displaying this floor plan.

Unauthorised reproduction prohibited.

Â© Still Moving London LTD (www.stillmoving.london)

Interested?

redhill@ralphjames.co.uk
01737 765 555

ralphjames.co.uk

 **RALPH JAMES**