



Royal Earlswood Park, Redhill

£375,000





“

This characterful two-bedroom apartment in Royal Earlswood Park offers double-height ceilings, original beams, and en suite bedrooms, all set within 24 acres of beautiful grounds with excellent onsite amenities. With direct links to London and Gatwick, it's a must-see to appreciate its unique potential.

”



Guide Price £375,000 - £400,000

This impressive two-bedroom apartment is located within the historic Royal Earlswood Park, a prestigious setting that seamlessly combines timeless character with the convenience of modern amenities. Spanning a generous 1126 square feet, the property boasts soaring double-height ceilings and stunning original metal beams that lend unique architectural charm to the space. Both of the spacious double bedrooms are thoughtfully designed with en suite bathrooms and fitted wardrobes, offering ample storage and privacy.

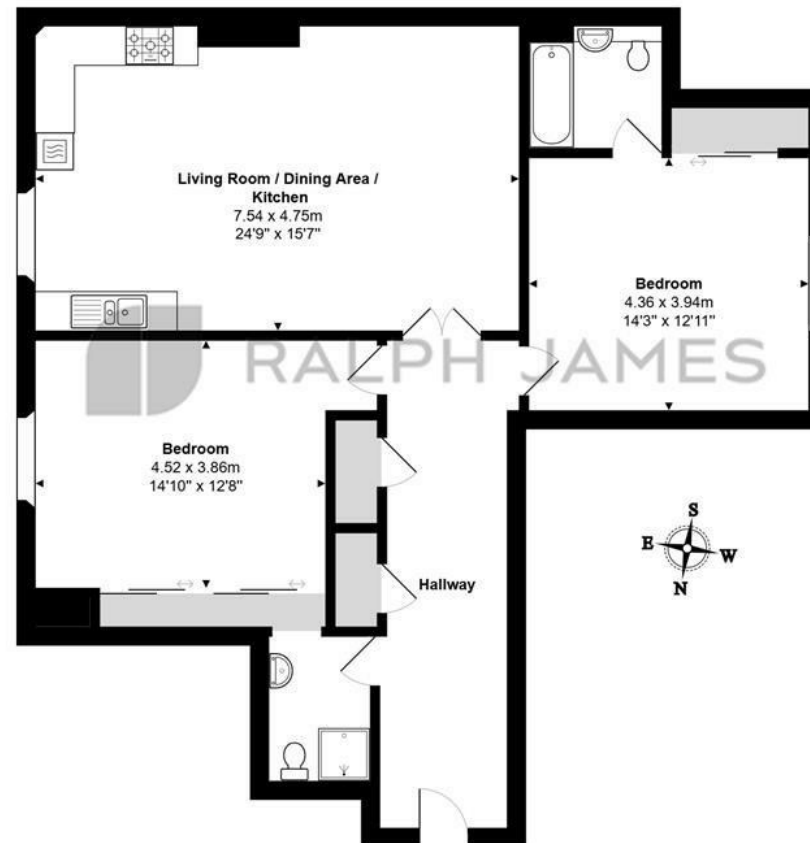
While the apartment presents an excellent opportunity for decorative modernisation, it holds immense potential to become a beautiful and stylish home. Residents will enjoy two allocated parking spaces, as well as additional visitor parking for guests. Beyond the apartment, Royal Earlswood Park provides an exceptional lifestyle, with 24 acres of landscaped communal grounds, an onsite gym, and a pool. Just a short walk from Earlswood train station, the location offers direct rail links to London and Gatwick, making it ideal for commuters and those who value easy city access.

Being sold with no onward chain, this property is ideal for first time buyers, investors or anyone wanting to move quickly!



Need to know

- Spacious two-bedroom apartment located in prestigious Royal Earlswood Park.
- Being sold with no onward chain
- Generous 1126 sqft layout with impressive double-height ceilings.
- Original metal beams add unique architectural character.
- Two large double bedrooms each with en suite bathrooms and fitted wardrobes.
- Potential for decorative modernisation to personalise the space.
- Comes with two allocated parking spaces and additional visitor parking.
- Set within 24 acres of beautifully landscaped communal grounds.
- Onsite facilities include a fully equipped gym and swimming pool.
- Short walk to Earlswood train station with direct links to London and Gatwick.



Victoria Court, Royal Earlswood Park, Redhill

Total Area: 104.6 m² ... 1126 ft²

FOR ILLUSTRATIVE PURPOSES ONLY.

Whilst every attempt has been made to ensure the accuracy of the floor plan shown, all measurements, positioning, fixtures, features, fittings and any other data shown are an approximate interpretation for illustrative purposes only and are not to scale.

No responsibility is taken for any error, omission, miss-statement or use of data shown.

The above statement applies to both 'Still Moving London LTD' and the Company or individual displaying this floor plan.

Unauthorised reproduction prohibited.

Â© Still Moving London LTD (www.stillmoving.london)

Interested?

redhill@ralphjames.co.uk
01737 765 555

ralphjames.co.uk

