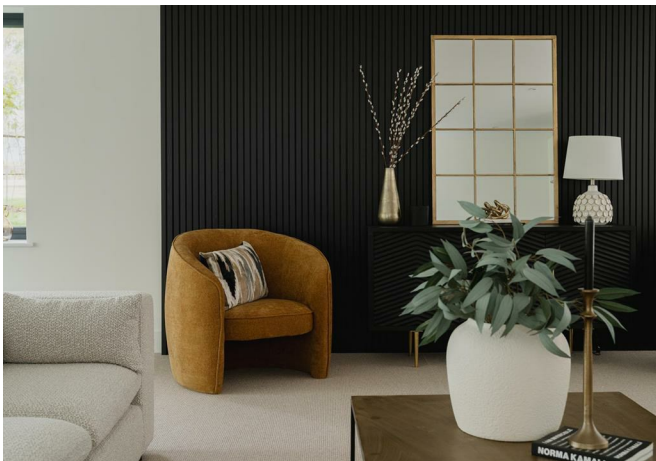




Woolborough Lane, Outwood

£1,650,000

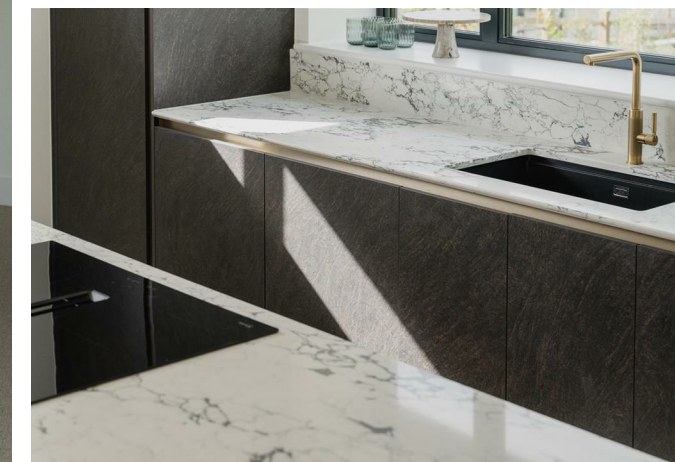




“

Introducing four brand new modern houses built by award winning developer Virtue Property group, where sustainability and contemporary design converge to create the ultimate living experience.

”



Four minimalist homes overlooking miles of undisturbed Surrey countryside, Ralph James is proud to present one of the best sites and schemes currently on the market.

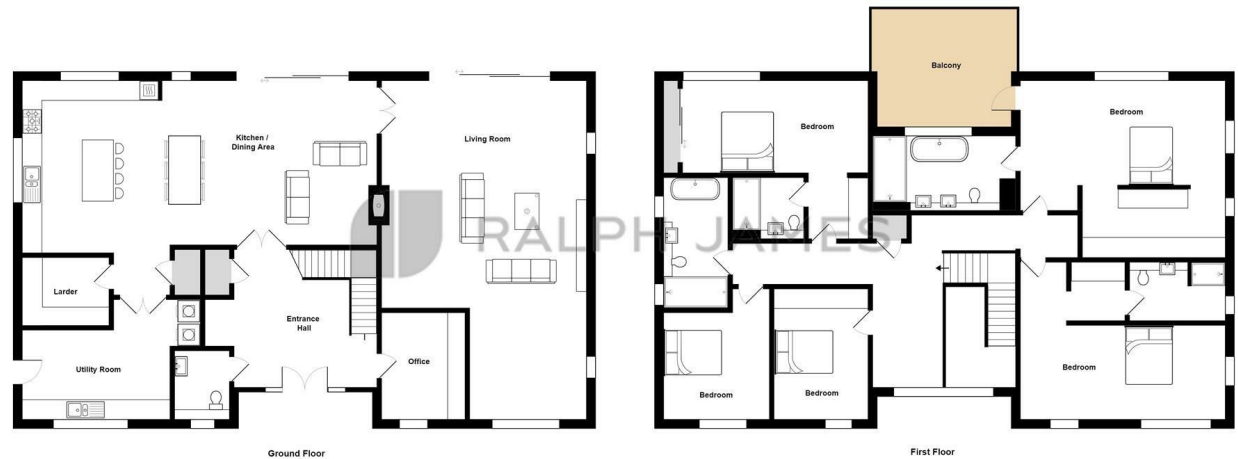
Designed to make the most of views across green pastures and leafy woodlands, these four expansive houses, which will unfold over 3875 sq ft, are perfect for those in pursuit of the pastoral. But quaint countryside cottage these are not: the sleek, striking building might reference traditional longhouses, but inside, it's all lateral living spaces, soaring ceilings and minimalist interiors. A floating terrace – yes, really – that overlooks the trees scores top marks.

The building is a contemporary take on an industrial barn, comprising low pitched roof elements with a flat-roofed porch that will form the main entrance. The exterior will be characterised by a striking combination of white brick and black timber with extensive glazing, and a stone base will level the plan with the sloping terrain towards the south end. Internally, a tactile palette of materials will establish a textured but minimalist aesthetic, allowing leafy views to take centre stage.

The plots lie in Outwood, located five miles south of Redhill in Surrey. This peaceful village is characterised by leafy country lanes and a the village is home to Outwood Mill, a post mill built in 1665, which was once the oldest working post windmill in England. The surrounding area is known for its open fields and rolling countryside, offering an array of walking and cycling routes easily accessible from the houses.

Need to know

- Set in a National Trust area, this 3800 sqft home is perfectly positioned to capture views of surrounding fields and woodland.
- This stunning new-build home seamlessly combines cutting-edge design with a semi-rural lifestyle in the charming village of Outwood.
- One of only four homes in a prestigious development, it offers exclusivity and impeccable craftsmanship by Virtue Property Group.
- Just a short drive from Redhill and Reigate, the property enjoys easy access to commuter links and boutique shopping.
- The striking double-height entrance hall sets the tone for the spacious, light-filled interiors throughout the home.
- A vast kitchen and dining area, complete with a central feature island and sliding doors, connects beautifully to the garden.
- The double-aspect drawing room is a luxurious living space, enhanced by a dramatic panelled wall and generous proportions.
- Upstairs, the principal suite boasts a dressing area, opulent en suite, and a private balcony with far-reaching views.
- Thoughtful additions like a fitted utility room, pantry, office, and eco-friendly air source heat pump enhance everyday comfort.
- The property features five bedrooms, four bathrooms, and modern fixtures and finishes of the highest standard.



FOR ILLUSTRATIVE PURPOSES ONLY.

Whilst every attempt has been made to ensure the accuracy of the floor plan shown, all measurements, positioning, fixtures, features, fittings and any other data shown are an approximate interpretation for illustrative purposes only and are not to scale.

No responsibility is taken for any error, omission, mis-statement or use of data shown.

The above statement applies to both 'Still Moving London LTD' and the Company or individual displaying this floor plan.

Unauthorised reproduction prohibited.

Ad: Still Moving London LTD (www.stillmoving.london)

RALPH JAMES

Interested?

redhill@ralphjames.co.uk
01737 765 555

1

ralphjames.co.uk