



Royal Earlswood Park, Redhill
£550,000





“

We've loved living at Royal Earlswood Park. The welcoming community, the beautiful grounds, and the gym and pool facilities have made it a fantastic place to call home. Bringing new life to such an iconic building through our renovation has been a real labor of love that we're super proud of. We'll be sad to leave this wonderful home, but we're ready for our next chapter as a growing family.

”



Nestled within the prestigious Royal Earlswood Park estate, this exceptional apartment combines historic grandeur with meticulous modern renovation. Fully redesigned in 2023, the home celebrates the building's striking architecture — from its imposing proportions to its near 4-metre ceilings — creating light-filled, impressive spaces rarely found in contemporary developments. Surrounded by 24 acres of private parkland, the property offers heritage, space and luxury just minutes from fast London connections.

The interior has been thoughtfully reimagined with bespoke panelling crafted by skilled carpenters, premium finishes, and a cohesive design led by a London interior designer. Every room feels elegant, refined, and ready to move straight into.

At the heart of the home is a striking open-plan living space centred around a vast panoramic window overlooking the landscaped grounds. Flooded with natural light, this room offers a dramatic yet serene setting for both everyday living and entertaining. The upgraded kitchen features premium integrated appliances, stylish stone worktops and a clean, modern aesthetic.

Both bathrooms have been finished to a luxurious standard, complete with underfloor heating and high-quality fixtures. The bedrooms are spacious and peaceful, with the principal suite benefiting from an en-suite shower room and beautifully designed fitted wardrobes.

The property has been fully modernised, including a new central-heating system, full rewiring, a new acoustic/thermal subfloor, and high-quality decoration throughout. Royal Earlswood Park offers an unrivalled lifestyle: access to 24 acres of private parkland, a residents-only swimming pool, gym, library, orchard, lake and immaculately kept communal gardens — creating a rare sense of tranquillity and privacy.

Despite its idyllic setting, the location is superbly connected. Earlswood Station is just a short 7-minute stroll away, with trains reaching London Bridge in approximately 38 minutes.



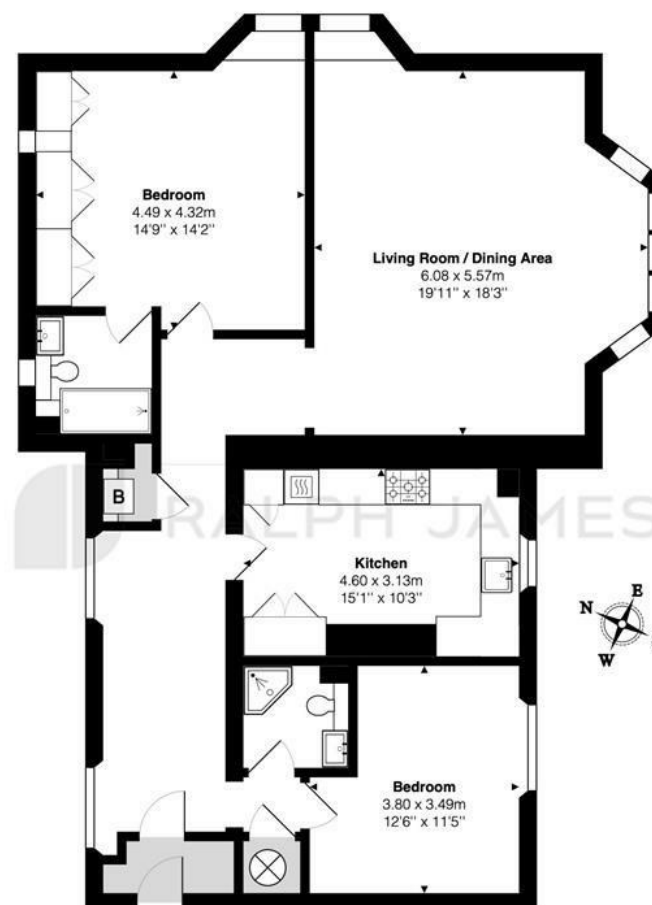
Need to know

- Beautifully renovated, ready-to-move-into apartment finished to a consistent high specification throughout
- Bespoke joinery and designer-led detailing in every room, including premium lighting, high-quality materials, and custom carpentry
- Exceptional residents-only amenities including a swimming pool, gym, library, orchard, lake and 24 acres of landscaped private grounds
- Short walk to Earlswood and Redhill stations for direct links to London Bridge (38 mins) and London Victoria (46 mins)
- Grand near-4m ceilings and a striking open-plan living space framed by a panoramic window overlooking the grounds
- Luxury bathrooms featuring Villeroy & Boch sanitaryware and Gessi Italian fittings, including an en-suite to the principal bedroom
- Two generous double bedrooms with thoughtfully designed storage and serene décor
- New boiler and oversized hot-water cylinder delivering excellent pressure and reliability
- Two allocated parking spaces plus ample visitor parking
- Service charge includes full membership to the private on-site gym and swimming pool

Interested?

redhill@ralphjames.co.uk
01737 765 555

ralphjames.co.uk



First Floor Flat

Victoria Court, Royal Earlswood Park, Redhill

Total Area: 113.7 m² ... 1224 ft²

FOR ILLUSTRATIVE PURPOSES ONLY.

Whilst every attempt has been made to ensure the accuracy of the floor plan shown, all measurements, positioning, fixtures, features, fittings and any other data shown are an approximate interpretation for illustrative purposes only and are not to scale.

No responsibility is taken for any error, omission, miss-statement or use of data shown.

The above statement applies to both 'Still Moving London LTD' and the Company or individual displaying this floor plan.

Unauthorised reproduction prohibited.

Â© Still Moving London LTD (www.stillmoving.london)