



Royal Earlswood Park, Redhill

£550,000





“

We've loved living at Royal Earlswood Park. The welcoming community, the beautiful grounds, and the gym and pool facilities have made it a fantastic place to call home. Bringing new life to such an iconic building through our renovation has been a real labor of love that we're super proud of. We'll be sad to leave this wonderful home, but we're ready for our next chapter as a growing family.

”



Nestled within the prestigious Royal Earlswood Park, this beautifully refurbished two-bedroom apartment offers the perfect balance of grandeur, comfort, and convenience. Set within 24 acres of private parkland, residents enjoy exclusive access to outstanding on-site amenities including a swimming pool, gym, library, and tranquil communal spaces such as the lake, orchard, and manicured gardens - creating an idyllic retreat just moments from London connections.

Inside, the apartment has been thoughtfully redesigned by a London interior designer to create an inviting and contemporary home ready to move straight into. The impressive 3.9-metre-high ceilings and generous proportions fill each room with natural light, enhancing the sense of space and elegance throughout.

The main living area is a striking open space framed by a panoramic window overlooking the landscaped grounds - a perfect setting for relaxing or entertaining. The kitchen has been fully upgraded with premium integrated appliances and stylish stone worktops, combining practicality with modern sophistication.

Both bathrooms have been finished to a luxurious standard, complete with underfloor heating and high-quality fixtures for everyday comfort. The bedrooms are spacious and serene, with the principal suite offering an en-suite shower room and thoughtfully designed fitted wardrobes.

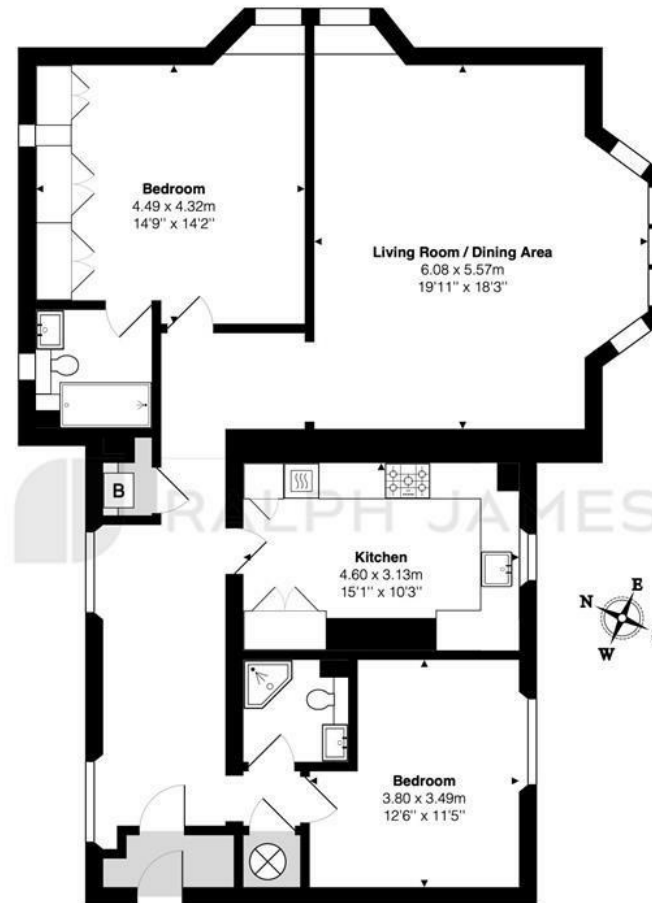
Royal Earlswood Park provides an unmatched lifestyle — peaceful, private, and surrounded by nature - yet superbly connected. Earlswood Station is just a short stroll away, offering direct links to London Bridge in approximately 38 minutes and London Victoria in around 46 minutes, while the M25 and Gatwick Airport are easily accessible.

This exceptional home blends elegant design with effortless living in one of Surrey's most sought-after developments.



Need to know

- Luxurious & high end two double bedroom apartment with incredible attention to detail
- Situated on the prestigious Royal Earlswood Park and retains full access to its 24 acres of grounds
- Two allocated parking spaces along with ample visitors parking
- Two large double bedrooms, serviced by a three piece bathroom and en suite. Both bathrooms feature Villeroy & Boch fixtures and finished with Gessi designer fittings
- Brand new boiler and oversized water cylinder for excellent pressure and hot water on demand
- Walking distance from Redhill & Earlswood train stations for direct links into London
- Vast, open entertaining space with panoramic window overlooking the grounds
- Bespoke height cabinetry, Italian appliances including Bertazzoni oven and gas hob, Neff integrated dishwasher and limestone flooring
- Circa 100 Years remaining on the lease
- Services charges include a membership to the developments exclusive gym & swimming pool



First Floor Flat

Victoria Court, Royal Earlswood Park, Redhill

Total Area: 113.7 m² ... 1224 ft²

FOR ILLUSTRATIVE PURPOSES ONLY.

Whilst every attempt has been made to ensure the accuracy of the floor plan shown, all measurements, positioning, fixtures, features, fittings and any other data shown are an approximate interpretation for illustrative purposes only and are not to scale.

No responsibility is taken for any error, omission, miss-statement or use of data shown.

The above statement applies to both 'Still Moving London LTD' and the Company or individual displaying this floor plan.

Unauthorised reproduction prohibited.

Â© Still Moving London LTD (www.stillmoving.london)

Interested?

redhill@ralphjames.co.uk
01737 765 555

ralphjames.co.uk