



Canalside, Redhill

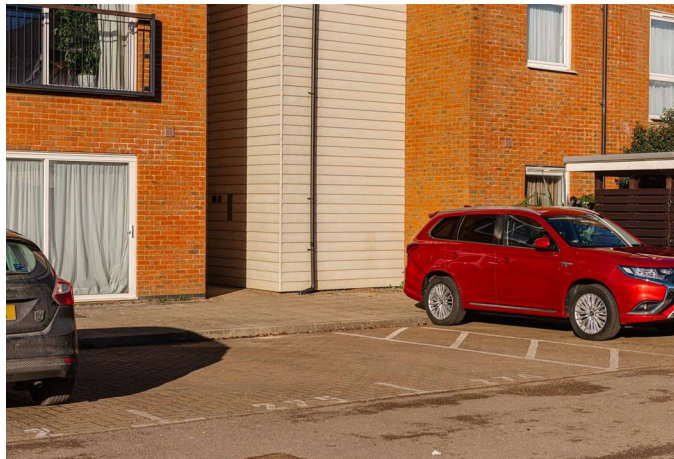
£260,000





Having lived on Watercolour since 2007, when the time came to buy our first home as a couple it was a no-brainer to stay within the development. Having a Tesco Express, GP, Pharmacy and Vet on our doorstep has been especially convenient. We love being able to step out of our front door onto a nature reserve, especially with two dogs! The flat itself is bright and spacious and having put our own stamp on it, it has been our home for the past five years. Whilst we are now looking to upsize, we will be sad to leave a thriving and neighbourly community where we have made life long friends.





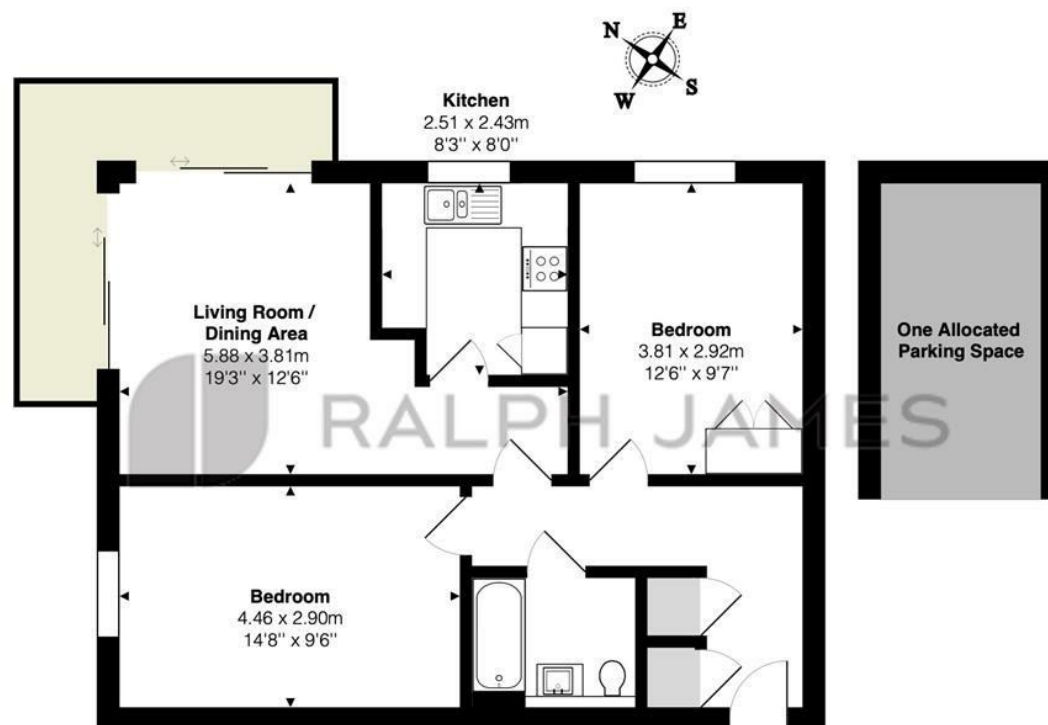
This elegantly refurbished ground floor apartment is the perfect blend of tranquility and luxury. Having been extensively modernized in recent years, this two double bedroom home is brought to market in exceptional decorative order.

As you enter the property you are met by a much larger and brighter than average hallway, servicing two spacious double bedrooms, a stunning family bathroom and a very impressive living / dining area. The living space opens out to a private terrace area through sliding doors and offers defined relaxation and entertaining spaces. The beautiful Howden kitchen has been recently fitted and boasts a modern feel and integrated appliances.

Situated in the ever sought after Watercolour development, you have both country walks and transport links right on your doorstep. The development also benefits from a wide range of shops, schools and other amenities.

Need to know

- Beautifully refurbished ground floor apartment
- Two spacious double bedrooms
- Sliding doors leading to a private wrap around terrace area
- Recently fitted Howdens kitchen
- One allocated parking space along with ample visitors parking
- Popular Watercolour development offering vast open spaces, amenities and a nature reserve
- Short walk to shops, schools and transport links



Ground Floor Flat

Canalside, Redhill

Total Area: 61.5 m² ... 662 ft² (excluding one allocated parking space)

FOR ILLUSTRATIVE PURPOSES ONLY.

Whilst every attempt has been made to ensure the accuracy of the floor plan shown, all measurements, positioning, fixtures, features, fittings and any other data shown are an approximate interpretation for illustrative purposes only and are not to scale.

No responsibility is taken for any error, omission, miss-statement or use of data shown.

The above statement applies to both 'Still Moving London LTD' and the Company or individual displaying this floor plan.

Unauthorised reproduction prohibited.

Â© Still Moving London LTD (www.stillmoving.london)



Interested?

redhill@ralphjames.co.uk
01737 765 555

ralphjames.co.uk