



# Royal Earlswood Park, Redhill

£600,000





“

We've loved living at Royal Earlswood Park. The welcoming community, the beautiful grounds, and the gym and pool facilities have made it a fantastic place to call home. Bringing new life to such an iconic building through our renovation has been a real labor of love that we're super proud of. We'll be sad to leave this wonderful home, but we're ready for our next chapter as a growing family.

”



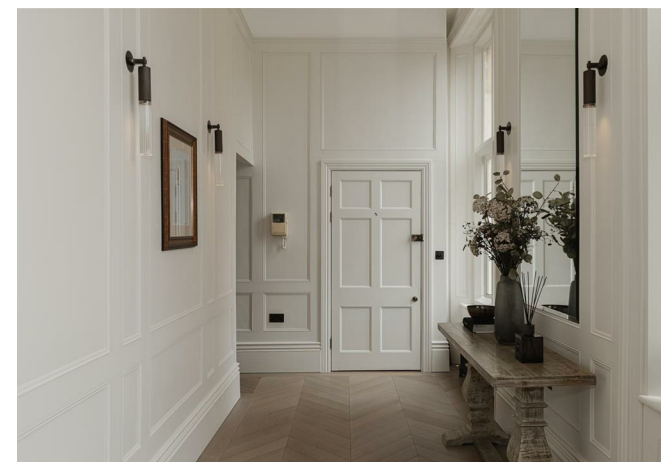
Nestled in the prestigious Royal Earlswood Park, this contemporary two-bedroom apartment offers the epitome of luxury living. The development provides 24 acres of pristine grounds, featuring a gym, pool, library, serene lake, and a charming orchard, all designed for an exclusive lifestyle.

Designed by a London interior designer, the apartment embodies the essence of high-end living. Each room features Orluna lighting on multiple circuits, allowing you to set the perfect ambiance for any occasion. Recently refurbished from top to bottom, the residence showcases exquisite craftsmanship. Joiners have thoughtfully replaced the skirting, architraves, and added elegant paneling throughout.

The bathrooms are equipped with Villeroy & Boch fixtures and finished with Gessi designer Italian brassware fittings. Electric underfloor heating provides ultimate comfort. Custom-sprayed Victorian cast iron radiators and door handles crafted by a local ironmonger add unique character to the home. The bespoke Italian kitchen is a chef's dream, featuring imported Bertazzoni appliances, bespoke stone countertops, and a custom cooker hood.

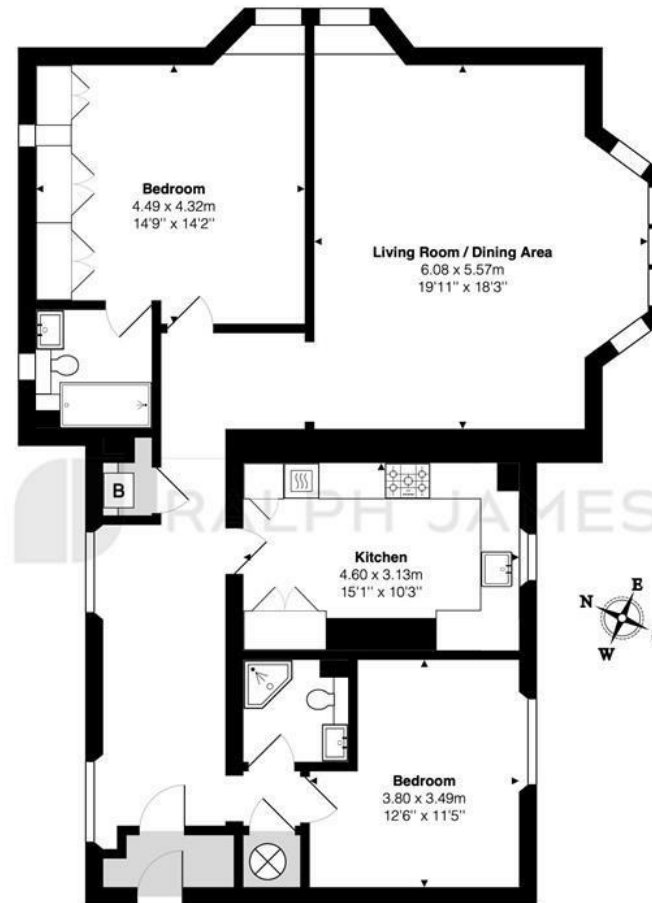
The master bedroom boasts bespoke solid oak wardrobes with integrated lighting and an en-suite bathroom. Throughout the apartment, the high ceilings create a sense of grandeur, while the vast main living space is highlighted by a stunning panoramic window that offers breathtaking views over the beautifully landscaped grounds. This apartment truly defines luxury living in every detail.

Royal Earlswood proves to be a private, peaceful and luxurious place to live, whilst still being very commutable into London and the M25. Earlswood train station is just a short walk away which is a direct link into the city.



## Need to know

- Luxurious & high end two double bedroom apartment with incredible attention to detail
- Situated on the prestigious Royal Earlswood Park and retains full access to its 24 acres of grounds, gym, pool & library
- Two allocated parking spaces along with ample visitors parking
- Two large double bedrooms, serviced by a three piece bathroom and en suite. Both bathrooms feature Villeroy & Boch fixtures and finished with Gessi designer fittings
- Brand new boiler and oversized water cylinder for excellent pressure and hot water on demand
- Walking distance from Redhill & Earlswood train stations for direct links into London
- Vast, open entertaining space with panoramic window overlooking the grounds
- Bespoke height cabinetry, Italian appliances including Bertazzoni oven and gas hob, Neff integrated dishwasher and limestone flooring
- 100 Years remaining on the lease
- Full spec list available upon enquiry



### First Floor Flat

Victoria Court, Royal Earlswood Park, Redhill

Total Area: 113.7 m<sup>2</sup> ... 1224 ft<sup>2</sup>

FOR ILLUSTRATIVE PURPOSES ONLY.

Whilst every attempt has been made to ensure the accuracy of the floor plan shown, all measurements, positioning, fixtures, features, fittings and any other data shown are an approximate interpretation for illustrative purposes only and are not to scale.

No responsibility is taken for any error, omission, miss-statement or use of data shown.

The above statement applies to both 'Still Moving London LTD' and the Company or individual displaying this floor plan.

Unauthorised reproduction prohibited.

Â© Still Moving London LTD (www.stillmoving.london)

## Interested?

redhill@ralphjames.co.uk  
01737 765 555

ralphjames.co.uk