



# 8 Earlswood Road, Redhill

Offers In Excess Of £190,000





“

It's a beautiful light property with high ceilings that gives a sense of peace & space. The flat benefits from a modern kitchen with the appeal & traditional sash windows. I lived there while working in the city, with an easy commute from Earlswood station into London Bridge.

”



Located just a short walk from Redhill station and town centre, you also are just a stone's throw away from Earlswood station with great access into central London. This one double bedroom apartment is fantastic for those looking to purchase their first home or someone looking for the ideal investment property.

Situated on the first floor, this apartment benefits from an abundance of natural light, unbelievable ceiling height, beautiful views into the distance and a fantastic entertaining space for friends and family to visit. Not to mention that this home is also offered to the market with no onward chain.

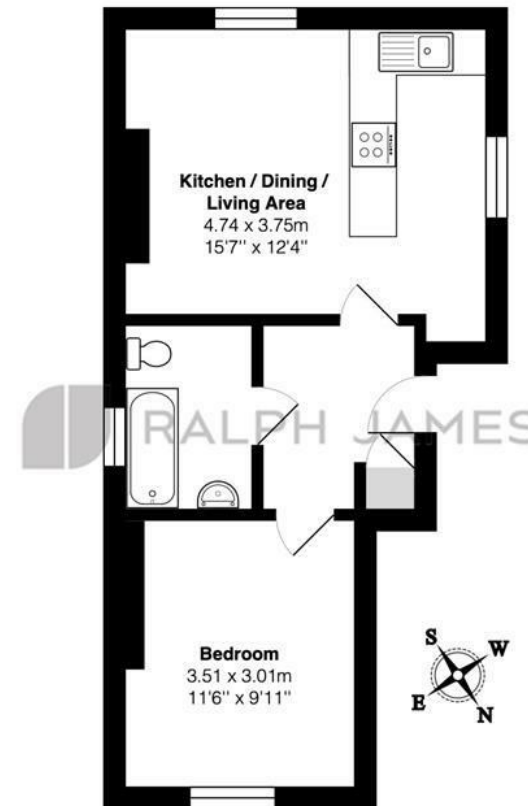
Upon entry through the front door, leading right, you shall find your open plan kitchen and living room which makes the perfect entertainment spot. Heading left you shall enter the double bedroom with ample storage which is the perfect size for a cozy spot to help unwind in the evening. Both being serviced by a great sized family bathroom in the heart of the property.

On the doorstep of this fantastic apartment, you have a variety of amazing amenities that Redhill and Reigate have to offer as well as the beautiful scenery which could make for the perfect evening walk or run.



## Need to know

- One double bedroom apartment
- Stones throw away from Earlswood station
- No onward chain
- Beautiful views into the distance
- Variety of local amenities on the doorstep
- Situated on the first floor of this conversion property
- Short walk to Earlswood common
- Direct commute straight into central London
- Council Tax band: C
- EPC Rating: D



### First Floor

Earlswood Road, Redhill  
Total Area: 38.9 m<sup>2</sup> ... 419 ft<sup>2</sup>  
FOR ILLUSTRATIVE PURPOSES ONLY.

Whilst every attempt has been made to ensure the accuracy of the floor plan shown, all measurements, positioning, fixtures, features, fittings and any other data shown are an approximate interpretation for illustrative purposes only and are not to scale.

No responsibility is taken for any error, omission, miss-statement or use of data shown.

The above statement applies to both 'Still Moving London LTD' and the Company or individual displaying this floor plan.

Unauthorised reproduction prohibited.

© Still Moving London LTD (www.stillmoving.london)



## Interested?

redhill@ralphjames.co.uk  
01737 765 555

ralphjames.co.uk