



The Moors, Redhill

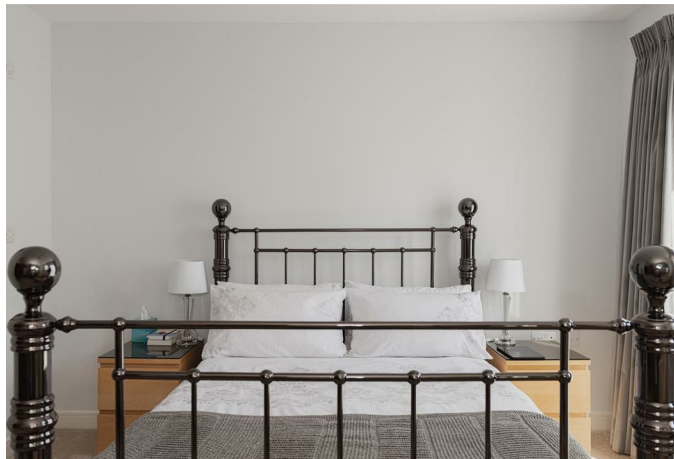
Offers in excess of £620,000





We purchased our beautiful home 14 years ago and still look forward to returning home, wherever we've been. It's been an outstanding family home, a fantastic funhouse and a great sanctuary too. We're downsizing as we no longer need such an expansive home.





Welcome to a truly exceptional home in the highly desirable Watercolour development, offering a spacious and meticulously refurbished living space of over 1700 sqft. This delightful property features four generously sized double bedrooms, perfect for a growing family or those who love to entertain.

The two bedrooms on the second floor share a clever Jack and Jill en suite, adding convenience and practicality. The bedrooms on the first floor are serviced by a modern family bathroom. The ground floor boasts an expansive reception room stretching over 24 feet, featuring a part glass ceiling that bathes the room in natural light and French patio doors that lead to a south-west facing garden, ideal for alfresco dining and relaxing in the sun.

A second, equally spacious reception room on the first floor offers a cozy and private space for unwinding, while the modern kitchen breakfast room fitted with appliances and adjacent dining area, perfect for family meals and entertaining guests. The entire property is in immaculate condition, having been lovingly refurbished by the current owners to the highest standards.

Watercolour is known for its scenic nature walks and easy access to the Moors Nature Reserve, making it a haven for nature lovers.

Within the development, you'll find essential amenities such as a doctor's, veterinary clinic, and a Tesco express, all within easy reach. The area is also served by excellent schools, all within walking distance, making it a perfect location for families.

Commuting is easy with a bus route taking you directly to Redhill Station, which is also only a short walk away. Providing easy access into London directly.



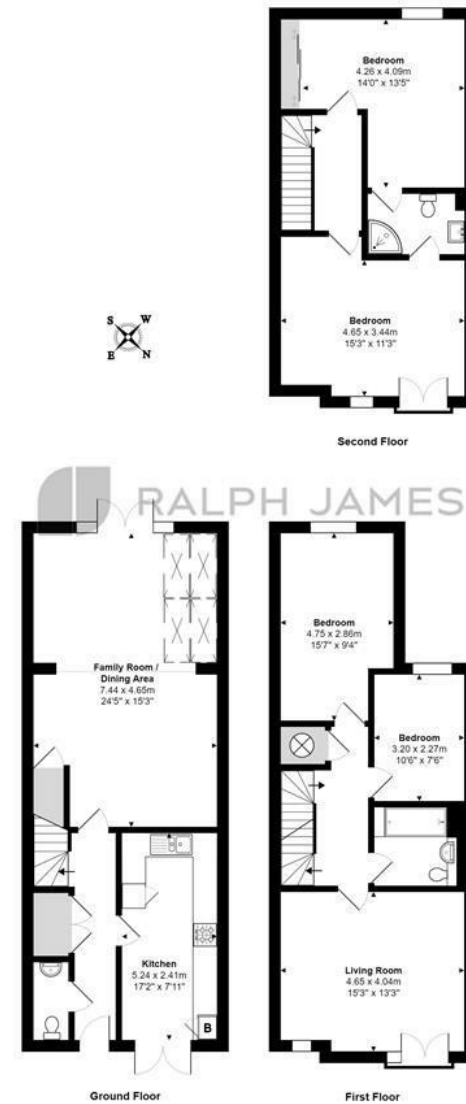
Need to know

- Spacious four double bedroom home in the sought-after Watercolour development.
- Over 1700 sqft of meticulously refurbished living space.
- Jack and Jill en suite for two bedrooms on the second floor.
- Expansive ground floor reception room over 24 feet long with a part glass ceiling and French patio doors to the garden.
- South-west facing garden ideal for outdoor dining and relaxation.
- Cozy and private second reception room on the first floor.
- Modern kitchen breakfast room with fitted appliances and a dining area.
- Contemporary family bathroom on the first floor.
- Located near beautiful nature walks and the Moors Nature Reserve.
- Convenient amenities including a doctor's, veterinary clinic, shop, and excellent schools within walking distance.

Interested?

redhill@ralphjames.co.uk
01737 765 555

ralphjames.co.uk



The Moors, Redhill

Total Area: 158.0 m² ... 1701 ft²

FOR ILLUSTRATIVE PURPOSES ONLY:

Whilst every attempt has been made to ensure the accuracy of the floor plan shown, all measurements, positioning, fixtures, features, fittings and any other data shown are an approximate interpretation for illustrative purposes only and are not to scale.

No responsibility is taken for any error, omission, mis-statement or use of data shown.

The above statement applies to both 'Bill Moving London LTD' and the Company or individual displaying this floor plan.

Unauthorized reproduction prohibited.

© Bill Moving London LTD (www.billmovinglondon.com)

RALPH JAMES