



High Street, Bletchingley

£570,000





“

We have truly loved our time at Tun Cottage. We have been here approaching five years and in that time, we have refurbished the home from top to bottom. It has such a cozy feeling and the location couldn't be better. You have great pubs, coffee shops and nature walks all on your doorstep and you are still only a short drive away from Redhill which can get you in to London in less than an hour door to door. We will be sad to leave but the home is ready to welcome its new owners.

”



Positioned perfectly in the heart of the picturesque Bletchingley village, Tun Cottage is a stunning example of timeless charm and modern flair. Dating back to the 1600s, this immaculately maintained cottage boasts a wealth of character features that tell the story of its rich heritage while seamlessly incorporating contemporary comforts for today's living needs.

The interior of Tun Cottage is graced with original exposed beams, adding an authentic touch of history and warmth throughout the home. The cosy open fireplace serves as a focal point in the living area, perfect for creating a welcoming ambiance on winter evenings. From quaint nooks to thoughtfully preserved architectural details, every corner of Tun Cottage exudes charm.

Lovingly restored and maintained by the current owner, the cottage is in pristine condition, ready to be enjoyed without the need for further work. Modern amenities have been seamlessly integrated, ensuring a comfortable and convenient lifestyle while respecting the cottage's historic roots.



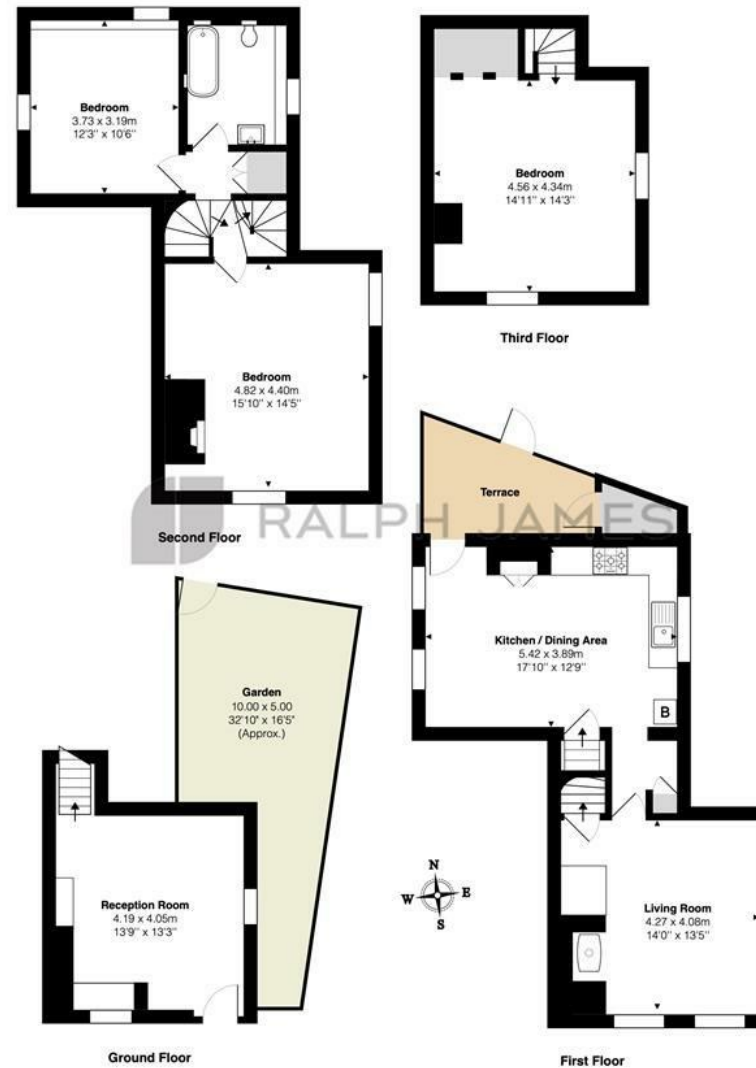
Outside, the property features two private courtyard gardens, ideal for outdoor dining, hosting, or simply unwinding in your own private space. A rare find in such a historic property, the driveway offers convenient off-street parking.

Situated just a short stroll from local shops, charming pubs, and scenic nature walks, Tun Cottage provides the perfect blend of village life and rural serenity. More than just a home, Tun Cottage is a piece of history, a sanctuary of comfort, and a gateway to the enchanting lifestyle of Bletchingley village. Discover the unique charm and enduring appeal of this extraordinary property.



Need to know

- Grade II listed cottage with a perfect blend of authentic character features and modern flair
- Three double bedrooms
- No onwards chain
- Meticulously refurbished to a high standard by the current owner
- Situated in the heart of Bletchingley village
- Walking distance from local boutique coffee shops, pubs and beautiful nature walks
- Two spacious reception rooms, one with stunning log burning fireplace
- Tun Cottage dates back to the 1600's
- Short drive from mainline train stations with direct lines into London
- Driveway offering off street parking



Interested?

redhill@ralphjames.co.uk
01737 765 555

ralphjames.co.uk

Tun Cottage, High Street, Nuffield, Redhill
Total Area: 131.2 m² ... 1412 ft² (excluding terrace, garden)
FOR ILLUSTRATIVE PURPOSES ONLY.

Whilst every attempt has been made to ensure the accuracy of the floor plan shown, all measurements, positioning, fixtures, features, fittings and any other data shown are an approximate interpretation for illustrative purposes only and are not to scale.

No responsibility is taken for any error, omission, mis-statement or use of data shown.

The above statement applies to both 'Still Moving London LTD' and the Company or individual displaying this floor plan.

Unauthorised reproduction prohibited.

© Still Moving London LTD (www.stillmoving.london)

RALPH JAMES