



Powell Gardens, Redhill

£600,000





Bright and airy three storey family home in a highly attractive location which benefits from a number of communal green spaces and a nature reserve, in addition there is a very handy local store at the entrance to the development





A four bedroom family home set in a highly attractive location on the ever popular park 25 development, with accommodation across three floors. Redhill town centre and station sits within walking distance.

The accommodation begins in the spacious hallway before entering the impressive kitchen/breakfast room with peninsula granite counter top, complemented by an array of integrated appliances and patio doors to the rear garden. The bright and spacious family room is a great place to socialise with friends and family.

Stairs rise to the first floor where you are met with the generous living room and a large double bedroom with built in wardrobes. The family bathroom completes the first floor accommodation.

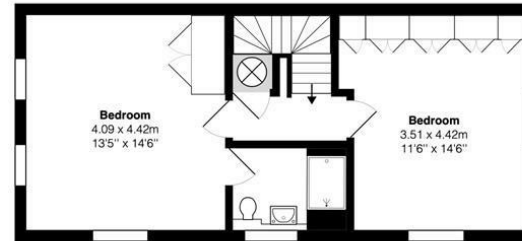
Two further double bedrooms can be found on the second floor both with built in wardrobes. The principal master suite enjoys a en suite.

Outside, the rear garden is fully fenced and low-maintenance mainly laid to lawn with patio area. There is also a single garage.

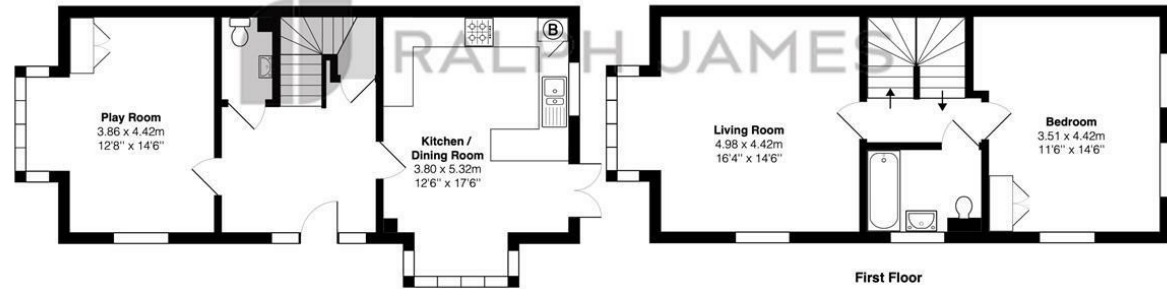
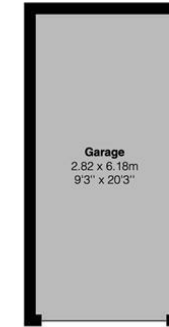


Need to know

- Guide Price £600,000 - £625,000
- Selection of excellent rated schools nearby including Lime Tree primary school
- Countryside walks on your doorstep including Mercers lake
- Two receptions rooms
- Principal master suite with en suite
- Allocated parking space and garage
- Low maintenance, landscaped rear garden
- Council Tax Band - E
- EPC rating - C
- A wonderful family home within easy reach of Redhill town centre



Second Floor



Ground Floor

First Floor

Powell Gardens, Redhill

Total Area: 158.8 m² ... 1709 ft²

FOR ILLUSTRATIVE PURPOSES ONLY.

Whilst every attempt has been made to ensure the accuracy of the floor plan shown, all measurements, positioning, fixtures, features, fittings and any other data shown are an approximate interpretation for illustrative purposes only and are not to scale.

No responsibility is taken for any error, omission, mis-statement or use of data shown.

The above statement applies to both 'Still Moving London LTD' and the Company or individual displaying this floor plan.

Unauthorised reproduction prohibited.

© Still Moving London LTD (www.stillmoving.london)



Interested?

redhill@ralphjames.co.uk
01737 765 555

1

ralphjames.co.uk