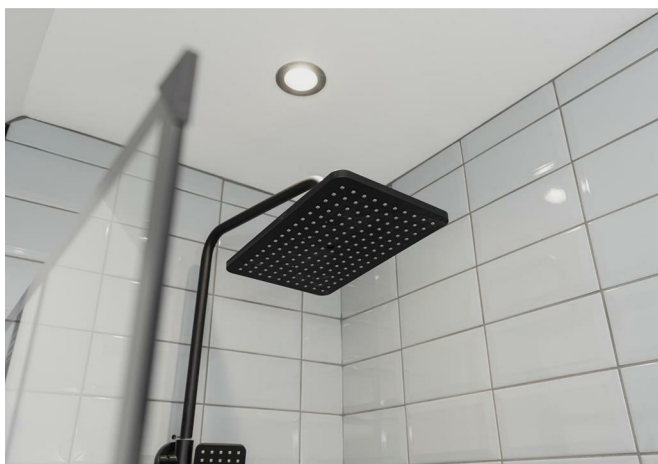




# Horley Road, Redhill

£950 Per Month

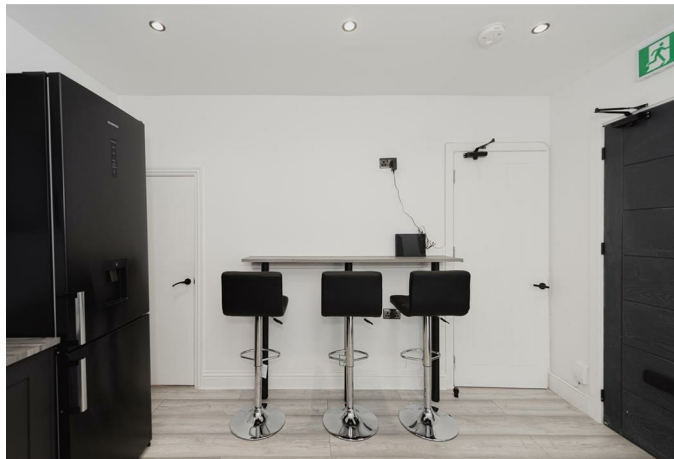




“

A fully furnished, period conversion in Redhill with six double bedrooms, modern amenities, low-maintenance garden, and all-inclusive bills. Ideal for East Surrey Hospital and Gatwick Airport staff.

”



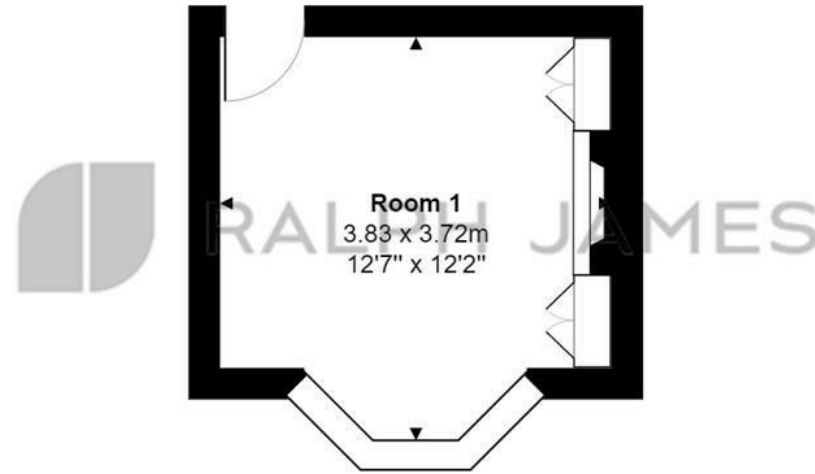
NHS DISCOUNT AVAILABLE - SPEAK TO US TO KNOW MORE

Ralph James is delighted to introduce to the Redhill rental market this beautifully renovated period conversion, designed for comfortable modern living for single occupants. This property combines contemporary standards with charming period features, including high ceilings, bay windows, and fireplaces. Spread over three levels, it offers six double bedrooms and shared spaces, including a kitchen, laundry, bathrooms, and a garden with a side return. The garden is low maintenance, featuring grass and a patio, along with a fish pond. The kitchen is fully equipped with all white goods, provided for all tenants. The property is fully furnished, and all bills are included.

This house is ideally situated for staff at East Surrey Hospital and Gatwick Airport, with Earlswood and Redhill stations nearby meaning longer commutes are readily available. Additionally, numerous bus routes are easily accessible.

## Need to know

- Ralph James presents a renovated period conversion in Redhill
- Designed for single occupants with modern standards.
- Features six double bedrooms over three levels.
- Includes shared kitchen, laundry, and bathrooms.
- Fully furnished with all bills included.
- Kitchen equipped with all white goods.
- Low-maintenance garden with grass, patio, and fish pond.
- Ideal for East Surrey Hospital and Gatwick Airport staff.
- EPC: E
- Council Tax: INCLUDED



### Ground Floor

Horley Road, Redhill

Total Area: 12.6 m<sup>2</sup> ... 136 ft<sup>2</sup>

FOR ILLUSTRATIVE PURPOSES ONLY.

Whilst every attempt has been made to ensure the accuracy of the floor plan shown, all measurements, positioning, fixtures, features, fittings and any other data shown are an approximate interpretation for illustrative purposes only and are not to scale.

No responsibility is taken for any error, omission, miss-statement or use of data shown.

The above statement applies to both 'Still Moving London LTD' and the Company or individual displaying this floor plan.

Unauthorised reproduction prohibited.

© Still Moving London LTD (www.stillmoving.london)



---

## Interested?

redhill@ralphjames.co.uk

01737 765 555

1

ralphjames.co.uk