



# Mockford Mews, Redhill

£535,000





“

Mockford Mews is a beautiful place to live and the immediate area has a lovely community feel to it. The house offers great space and is full of natural light. Having the shop and walks down the road is a blessing!

”



This beautiful, modern home offers a delightful living experience. As you step inside, you'll notice the mezzanine reception room, which provides an elevated view of the lounge area downstairs, creating an open and airy feel. Large windows flood the space with abundant natural light, making it warm and inviting.

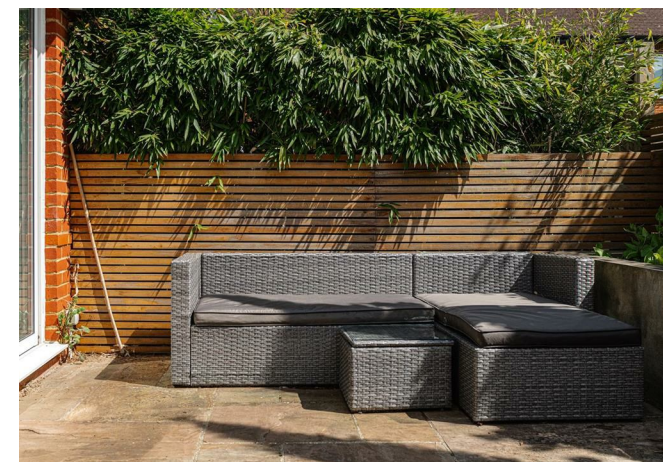
The principal suite is a true highlight, featuring an en suite bathroom and a spacious walk-in wardrobe. Additionally, there's a family bathroom and a convenient downstairs toilet to cater to everyday needs.

The heart of the home is the kitchen breakfast room, complete with an island for casual dining. Whether you're preparing meals or enjoying a morning coffee, this space is sure to be a gathering point for family and friends.

The remaining two bedrooms are well proportioned and offer their own peaceful retreats for residents or guests.

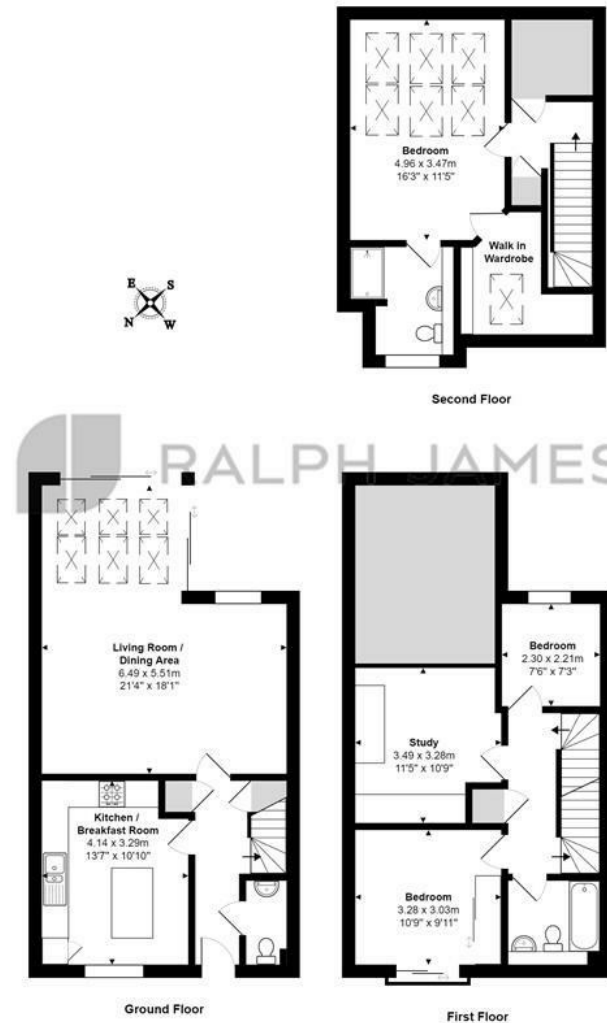
The South / East facing garden provides plenty of sunlight and backs directly onto a further, communal garden space with the neighboring properties, an ideal space for kids to play safely together.

Outside, the local area offers a wealth of amenities, including country walks, doctors, local shops, veterinary clinics, and schools—all within easy reach.



# Need to know

- Beautifully presented three bedroom family home
- Mezzanine reception room overlooking the ground floor lounge
- En suite and walk in wardrobe to the principal bedroom
- Situated in the popular Watercolour development
- Open plan kitchen / breakfast room with central island
- Beautiful country walks, shops, schools and station nearby
- South / East facing garden
- Stunning condition throughout
- Council Tax band - F
- EPC rating - C



## Interested?

redhill@ralphjames.co.uk  
01737 765 555

ralphjames.co.uk

Mockford Mews, Redhill  
Total Area: 132.0 m<sup>2</sup> ... 1421 ft<sup>2</sup>  
FOR ILLUSTRATIVE PURPOSES ONLY.

Whilst every attempt has been made to ensure the accuracy of the floor plan shown, all measurements, positioning, fixtures, features, fittings and any other data shown are an approximate interpretation for illustrative purposes only and are not to scale.

No responsibility is taken for any error, omission, mis-statement or use of data shown.

The above statement applies to both 'Still Moving London LTD' and the Company or individual displaying this floor plan.

Unauthorised reproduction prohibited.

Ad Still Moving London LTD (www.stillmoving.london)

**RALPH JAMES**