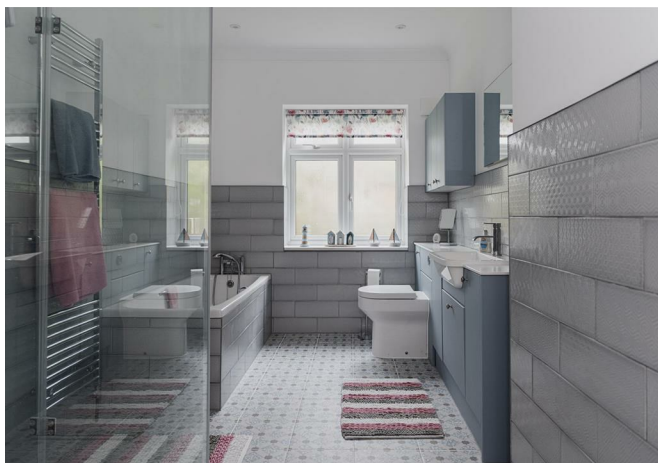




Reigate Road, Horley

Offers in excess of £1,000,000





“

Woodlands Cottage has been a beautiful family home and you would find it hard to find a better location. We have loved the space and flexibility it offers. The garden is filled with sun all day long!

”



Ralph James would like to welcome you to this special four bedroom detached bungalow located off Reigate Road, offering a tranquil and peaceful feel with breathtaking views over fields. Situated on an expansive 0.75 acre plot, this property boasts an abundance of space both inside and out.

As you enter, you immediately get a feel for the space with a large entrance landing which is flooded with natural light. The hub of the home is the enormous kitchen / dining room which has beautiful vaulted ceilings with natural exposed beams. This is the perfect hosting space and is very versatile in its use. The kitchen has been recently refitted and is in immaculate condition.

The home features an en suite to the spacious principal bedroom, along with a much larger than average family bathroom. The four bedrooms are all generous doubles, ideal for family living. Additionally, there is an outbuilding ideal for office space, providing flexibility for remote working whilst not compromising on bedroom space.

The main living room has magnificent views over the garden and surrounding greenery.

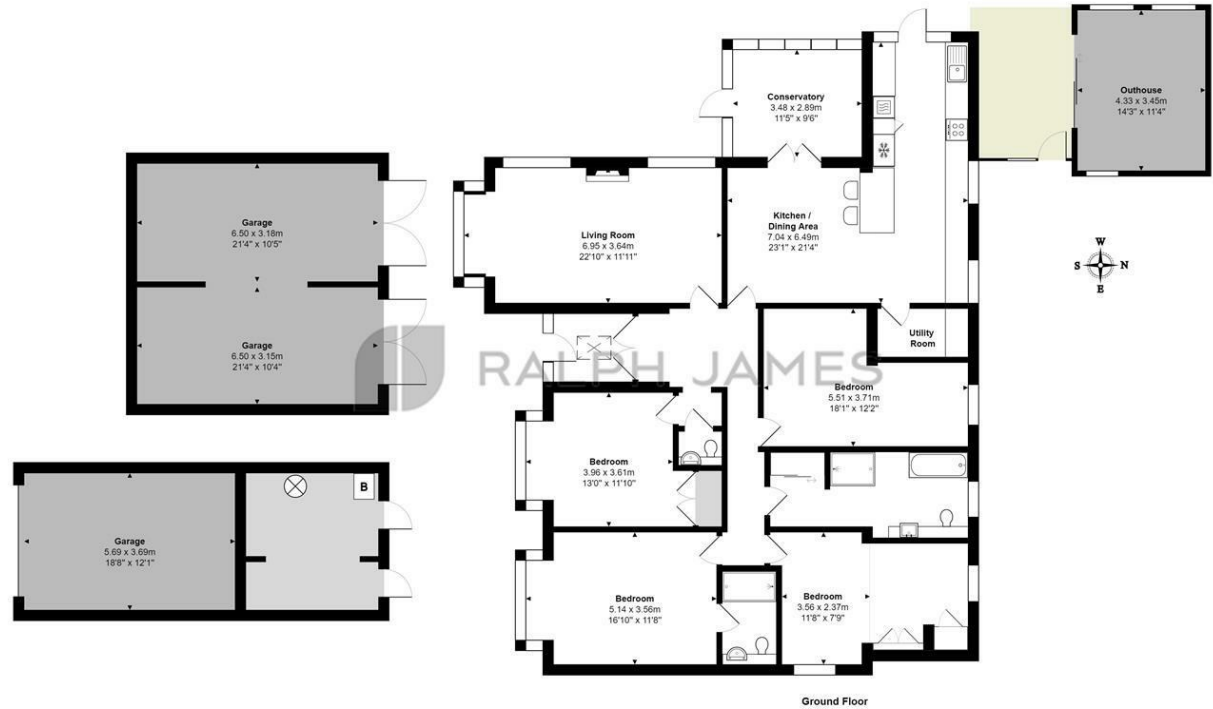
Outside, the property continues to impress with a huge driveway and three detached garages, providing plenty of parking and storage options.

The garden is most definitely one of the biggest selling points for this home. It has been beautifully landscaped and is completely private.



Need to know

- Beautifully refurbished four bedroom detached bungalow
- Set on a plot of approximately 0.75 of an acre
- Modern kitchen / dining room with stunning vaulted ceilings
- Three detached garages and an outbuilding
- Views over green space
- Four spacious double bedrooms
- En suite, large family bathroom and a separate toilet
- Enormous driveway creating a private and serene feel
- Council Tax - E
- EPC rating - E



Reigate Road, Hookwood, Horley
Total Area: 273.1 m² ... 2939 ft²
Total Area: 180.5 m² ... 1943 ft² (excluding outhouse, garage(s))

FOR ILLUSTRATIVE PURPOSES ONLY:
Whilst every attempt has been made to ensure the accuracy of the floor plan shown, all measurements, positioning, fixtures, features, fittings and any other data shown are an approximate interpretation for illustrative purposes only and are not to scale.
No responsibility is taken for any error, omission, mis-statement or use of data shown.

The above statement applies to both 'Still Moving London LTD' and the Company or individual displaying this floor plan.

Unauthorised reproduction prohibited.

© Still Moving London LTD (www.stillmoving.london)

RALPH JAMES

Interested?

redhill@ralphjames.co.uk
01737 765 555

ralphjames.co.uk