



# Kings Mill Lane, Redhill

£685,000







“

A detached property in South Nutfield offering a harmonious blend of modern living and rural charm.

”





A wonderful, detached property located in the charming village of South Nutfield, set in a semi-rural location amidst idyllic surroundings and picturesque countryside.

The expansive rear aspect living area has been designed to be the 'heart of the home' and is a spacious and inviting area that offers a warm and welcoming atmosphere with doors that effortlessly connect the indoor living space with the exterior, bringing in plenty of natural light and allowing for a smooth transition between the inside and outside areas. The separate open-plan kitchen/dining area creates a central hub for entertaining and socialising, making it ideal for hosting gatherings and special occasions.

The fully equipped kitchen features several integrated appliances, complemented by ample work surfaces and useful breakfast bar. The property comprises four double bedrooms providing ample space. One of these bedrooms enjoys the luxury of a private en suite with walk in shower, another features a large walk-in wardrobe. The family bathroom looks after the remaining accommodation.

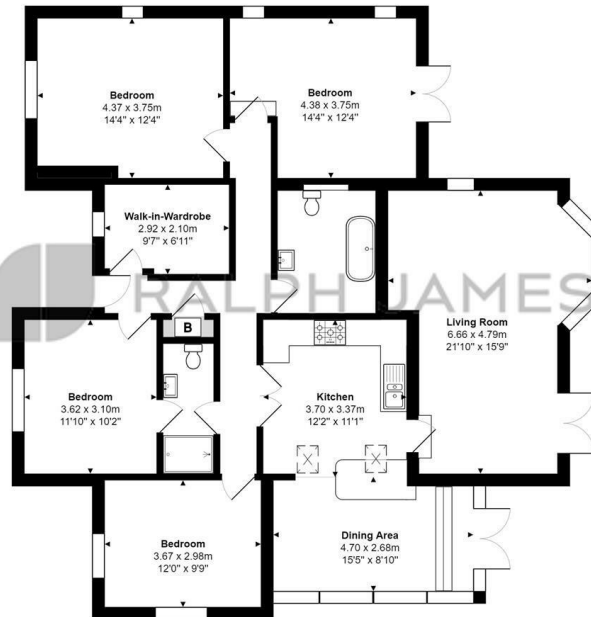
The rear garden is a standout feature of this property. It includes an extensive patio area, perfect for outdoor dining and relaxation, as well as a large expanse of lawn, providing an ideal space for outdoor activities.

At the front of the property is a large driveway and garage offering ample parking. Additionally, the garage provides further storage space and practicality.



## Need to know

- Detached bungalow located in the charming village of South Nutfield
- Close proximity to Holborn village shop,
- Short distance to South Nutfield train station
- Surrounded by picturesque countryside
- Large driveway and garage, offering ample parking space
- Four double bedrooms
- Open plan kitchen/dining room, creating a spacious and inviting entertaining area
- Master bedroom with en suite
- EPC Rating - D
- Council Tax Band - F



Kings Mill Lane, South Nutfield, Redhill  
Total Area: 140.3 m<sup>2</sup> ... 1510 ft<sup>2</sup> (excluding garage)

FOR ILLUSTRATIVE PURPOSES ONLY.

Whilst every attempt has been made to ensure the accuracy of the floor plan shown, all measurements, positioning, fixtures, features, fittings and any other data shown are an approximate interpretation for illustrative purposes only and are not to scale.

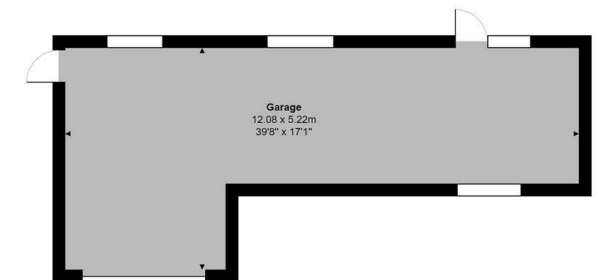
No responsibility is taken for any error, omission, miss-statement or use of data shown.

The above statement applies to both 'Still Moving London LTD' and the Company or individual displaying this floor plan.

Unauthorised reproduction prohibited.

© Still Moving London LTD (www.stillmoving.london)

 RALPH JAMES



---

## Interested?

redhill@ralphjames.co.uk  
01737 765555

ralphjames.co.uk