



Southcote Road, Redhill

Guide Price £450,000





“

We love living in this area and this house has been perfect for our needs. There is a great community feel and the location is superb for commuting and amenities. We are positive the new owner will love it as much as we have!

”



GUIDE PRICE £450,000 - £475,000

Welcome to this chic and modern residence that seamlessly blends comfort, aesthetics, and functionality. Nestled in a sought-after location, this new build exudes sophistication and offers a lifestyle that's both trendy and inviting. Built just four and a half years ago, there is still over half of the NHBC guarantee still in place.

The ground floor is open plan, with a stylish kitchen nestled in the corner. The current owners have cleverly created defined living and dining areas. The current layout aptly blends everyday living with entertaining. There is a downstairs toilet for added convenience.

Upstairs, discover two spacious double bedrooms, one of which hosting an en suite bathroom. The family bathroom services the second bedroom ensuring comfort and privacy for all residents.

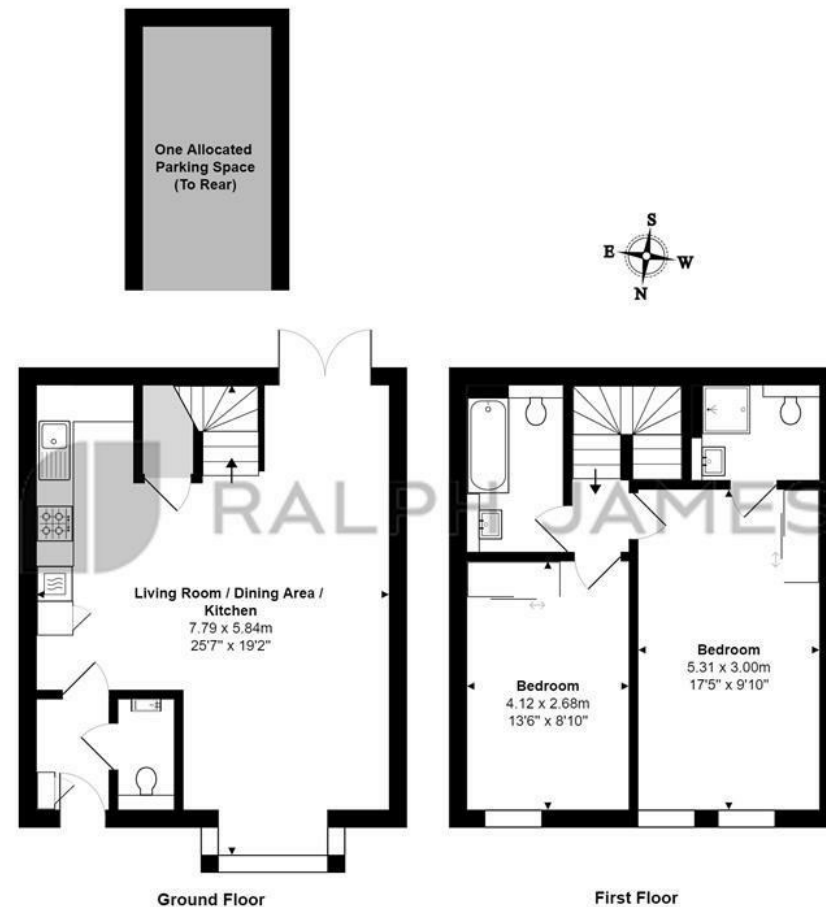
Outside, the patio garden exudes a chic rooftop ambiance, providing a cool and inviting retreat. There is an allocated parking space to the rear along with ample visitors parking.

This home is immaculately presented throughout and it is very much move in ready.



Need to know

- Stunningly presented two double bedroom home
- En suite to the principle bedroom, a family bathroom and a downstairs toilet
- Vendors suited with an onwards property
- Immaculately presented throughout with stylish decor
- Chic patio garden reminiscent of a rooftop bar garden, ideal for entertaining!
- Sought after location with fantastic transport links
- Dog not included!
- Council tax band - D



Southcote Road, Merstham

Total Area: 83.6 m² ... 900 ft² (excluding one allocated parking space (to rear))

FOR ILLUSTRATIVE PURPOSES ONLY.

Whilst every attempt has been made to ensure the accuracy of the floor plan shown, all measurements, positioning, fixtures, features, fittings and any other data shown are an approximate interpretation for illustrative purposes only and are not to scale.

No responsibility is taken for any error, omission, miss-statement or use of data shown.

The above statement applies to both 'Still Moving London LTD' and the Company or individual displaying this floor plan.

Unauthorised reproduction prohibited.

© Still Moving London LTD (www.stillmoving.london)

 RALPH JAMES

Interested?

redhill@ralphjames.co.uk
01737 765 555

ralphjames.co.uk