



Trindles Road, Redhill

£850,000

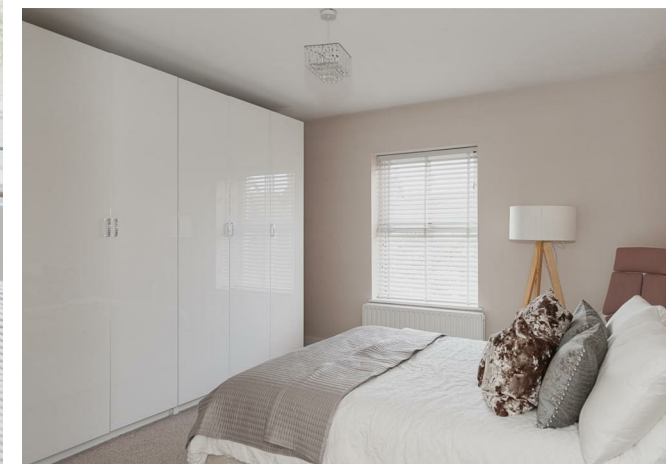




“

This has been our main residence for the past 7 years. Throughout our time here, we have lived every single moment. Each room is thoughtfully designed, ensuring generous proportions and an abundance of space. Situated in the pretty village of Nutfield, our home enjoys close proximity to convenient amenities such as a train station, a local shop, and an enchanting pub, all within walking distance. While bidding farewell is hard, we are excited for the joy that the next fortunate family will experience within these walls.

”



GUIDE PRICE £850,000 - £875,000

Welcome to this stunning five double bedroom home tucked away beautifully in the heart of South Nutfield village. The home boasts an incredible 2718 sqft of accommodation and seamlessly blends modern touches with beautiful period features. The spacious interior encompasses three spacious reception rooms, perfect for entertaining or relaxation.

Each of the five double bedrooms provides ample space, providing privacy and comfort for the whole family.

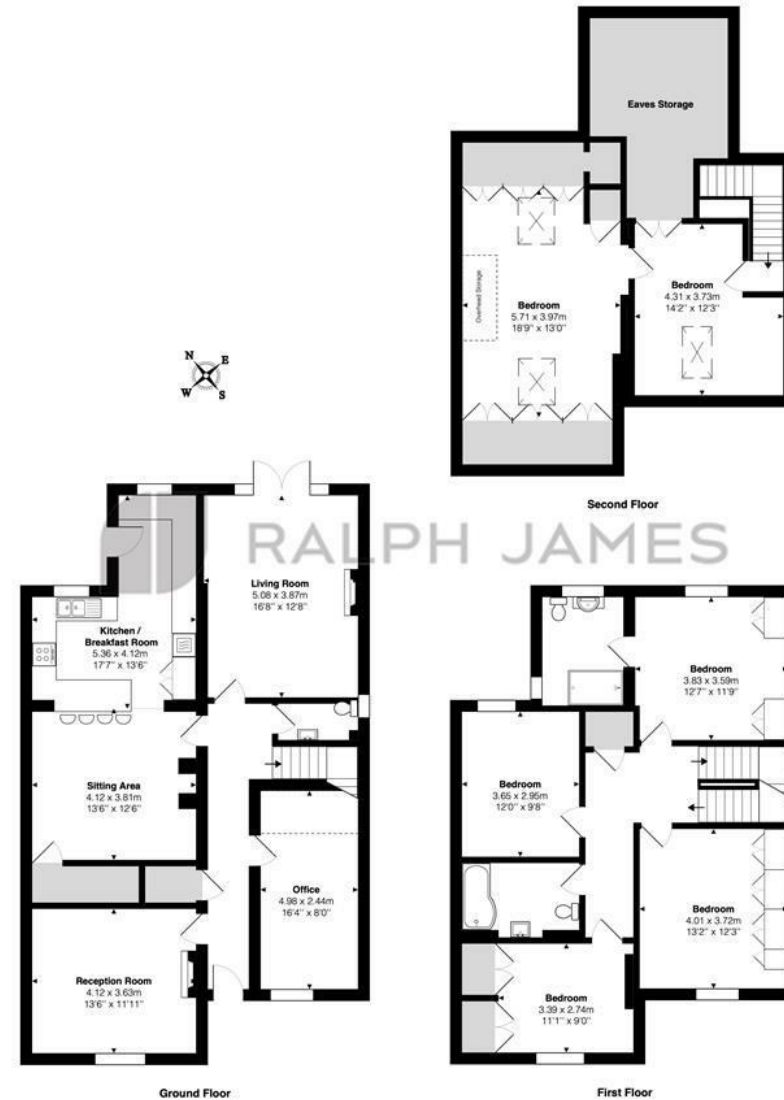
Outside, the property delights with its beautiful patterned red brickwork, further adding to its charm and character. South Nutfield village itself offers a picturesque setting, with local shops, a nearby station and semi rural ambience, truly offering you the best of commutability and peace.

Having been completely renovated in recent times, this home combines historical charm and contemporary living, offering a truly unique and inviting atmosphere.

This home has been lovingly cared for and is ready to welcome its new owners into an exceptionally special residence.

Need to know

- Five double bedroom home in highly sought after South Nutfield location
- Boasts an incredible 2718sqft of accommodation
- Completely modernised whilst maintaining beautiful period features
- En suite, family bathroom and downstairs toilet
- No onwards chain
- Three spacious reception rooms as well as a large kitchen diner
- A truly unique home that must be viewed to appreciate its size and charm
- Council Tax Band - F



Interested?

redhill@ralphjames.co.uk
01737 765 555

1

ralphjames.co.uk

Trindles Road, South Nutfield
Total Area: 252.5 m² ... 2718 ft²
FOR ILLUSTRATIVE PURPOSES ONLY.

Whilst every attempt has been made to ensure the accuracy of the floor plan shown, all measurements, positioning, fixtures, features, fittings and any other data shown are an approximate interpretation for illustrative purposes only and are not to scale.

No responsibility is taken for any error, omission, mis-statement or use of data shown.

The above statement applies to both 'Stil Moving London LTD' and the Company or individual displaying this floor plan.

Unauthorised reproduction prohibited.

Ad Stil Moving London LTD (www.stilmoving.london)

RALPH JAMES