

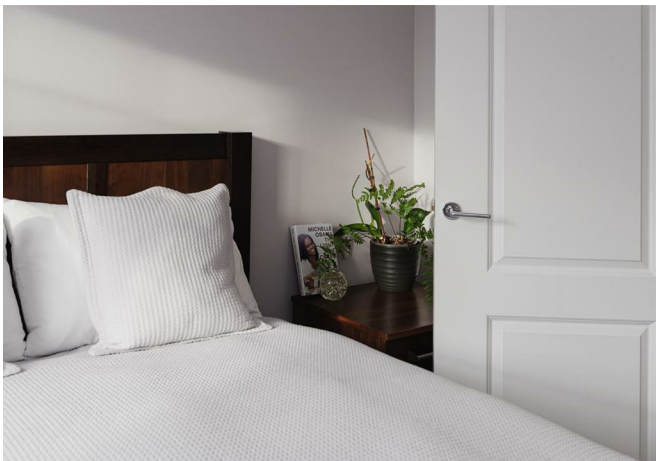


# Limes Close, Redhill

£500,000







“

Set in an excellent location surrounded by beautiful scenery is this wonderful three bedroom home which ticks all the boxes for a growing family.

”





**\*\* GUIDE PRICE £500,000 - £525,000 \*\***

Ralph James are thrilled to introduce this charming three bedroom home nestled in a quiet cul-de-sac in Redhill. This well maintained property boasts a spacious interior, modern kitchen and a beautiful wrap around garden offering the perfect blend of comfort and tranquility.

The property is situated in a fantastic residential location whilst enjoying the convenience of nearby amenities and privacy of a cul-de-sac. Ideal for families seeking a peaceful yet well-connected home with fantastic transport links nearby.

As you enter the property you are met by a spacious and bright entrance hallway. This leads into a larger than average reception room. At the rear of the home is a stunning kitchen / dining room with integrated appliances. There are French doors leading out to mature and private garden. The downstairs also benefits from a downstairs toilet.

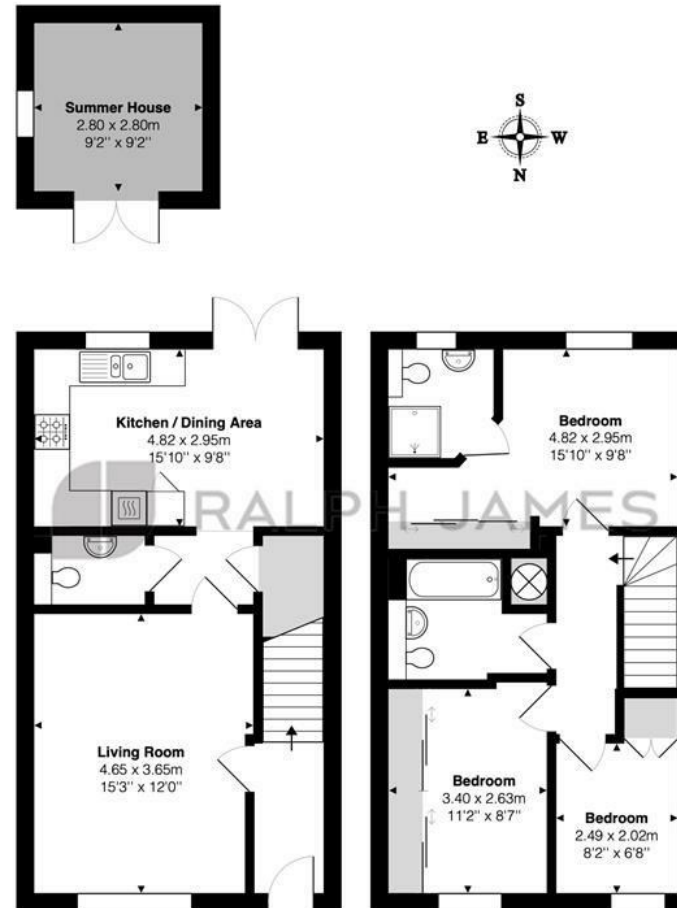
The upstairs accommodation is comprised of three well proportioned bedrooms, two of which being double rooms. The principle bedroom has its own three piece en-suite as well as built in wardrobes. Bedrooms two and three are served by a large family bathroom.

This home is sure to attract early interest and viewing is highly advised. Sole agents.



# Need to know

- Refurbished three bedroom home
- No Chain
- En Suite
- Versatile Summer House
- Solar Panels fitted!
- Kitchen / Dining Room
- Sought After Location
- Walk To Shops, Schools & Station
- Planning Permission Granted For Single Story Side Extension



Ground Floor

First Floor

Limes Close, Redhill

Total Area: 87.3 m<sup>2</sup> ... 940 ft<sup>2</sup> (excluding summer house)

FOR ILLUSTRATIVE PURPOSES ONLY.

Whilst every attempt has been made to ensure the accuracy of the floor plan shown, all measurements, positioning, fixtures, features, fittings and any other data shown are an approximate interpretation for illustrative purposes only and are not to scale.

No responsibility is taken for any error, omission, miss-statement or use of data shown.

The above statement applies to both 'Still Moving London LTD' and the Company or individual displaying this floor plan.

Unauthorised reproduction prohibited.

© Still Moving London LTD (www.stillmoving.london)



## Interested?

redhill@ralphjames.co.uk  
01737 765 555

ralphjames.co.uk