



Orchard Farm, Woolborough Lane

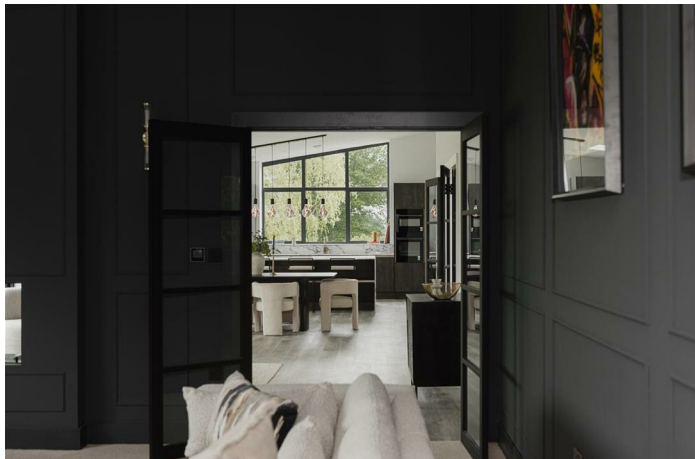
£1,750,000





Introducing four brand new modern houses built by award winning developer Virtue Property group, where sustainability and contemporary design converge to create the ultimate living experience.





Four minimalist homes overlooking miles of undisturbed Surrey countryside, Ralph James is proud to present one of the best sites and schemes currently on the market.

Designed to make the most of views across green pastures and leafy woodlands, these four expansive houses, which will unfold over 3422 sq ft and 3875 sq ft, are perfect for those in pursuit of the pastoral. But quaint countryside cottage these are not: the sleek, striking building might reference traditional longhouses, but inside, it's all lateral living spaces, soaring ceilings and minimalist interiors. A floating terrace – yes, really – that overlooks the trees scores top marks.

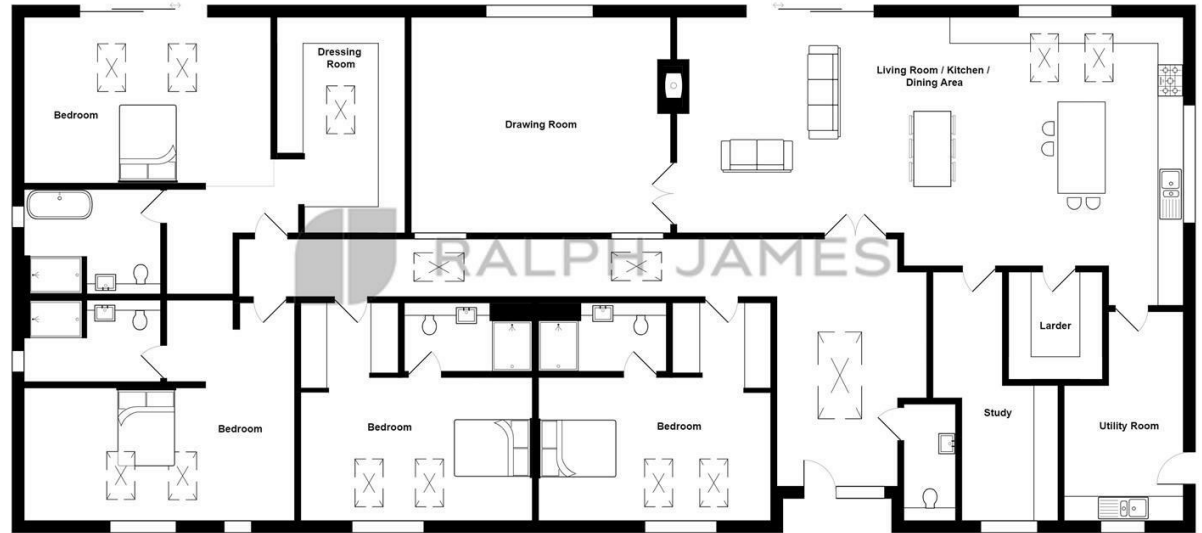
The building is a contemporary take on an industrial barn, comprising low pitched roof elements with a flat-roofed porch that will form the main entrance. The exterior will be characterised by a striking combination of white brick and black timber with extensive glazing, and a stone base will level the plan with the sloping terrain towards the south end. Internally, a tactile palette of materials will establish a textured but minimalist aesthetic, allowing leafy views to take centre stage.

The plots lie in Outwood, located five miles south of Redhill in Surrey. This peaceful village is characterised by leafy country lanes and the village is home to Outwood Mill, a post mill built in 1665, which was once the oldest working post windmill in England. The surrounding area is known for its open fields and rolling countryside, offering an array of walking and cycling routes easily accessible from the houses.



Need to know

- Four bed, four bath, two reception.
- Four executive barn style homes, in both single and double storey layouts.
- Spanning between 3422 and 3875 sq ft of living spaces.
- Three plots feature their own existing pond, with scope to transform into Natural Swimming Pools.
- Work with Virtue Property Group and Molly Hill Styling to build and design your own home.
- Main access to the house will be via an existing track running from the country lane, and a gated entrance opens onto a Permeable Block Paving driveway.
- Built and developed by Virtue Property Group, with outstanding attention to detail.
- Designed by architect Phil Roy, who has pitched a forward-thinking design that will stand out among its surroundings – for all the right reasons.
- Please note that the price and floorpan is for single storey listing, please enquire further for double storey.



Orchard Farm, Woolborough Lane, Outwood, Redhill

FOR ILLUSTRATIVE PURPOSES ONLY.

Whilst every attempt has been made to ensure the accuracy of the floor plan shown, all measurements, positioning, fixtures, features, fittings and any other data shown are an approximate interpretation for illustrative purposes only and are not to scale.

No responsibility is taken for any error, omission, mis-statement or use of data shown.

The above statement applies to both 'Still Moving London LTD' and the Company or individual displaying this floor plan.

Unauthorised reproduction prohibited.

© Still Moving London LTD (www.stillmoving.london)



Interested?

redhill@ralphjames.co.uk
01737 765 555

ralphjames.co.uk