



# Nutfield Road, Redhill

£975,000





“

Contemporary design meets family living in a location that offers it all, direct links to London one way and country walks the other.

”



This four bedroom detached home combines contemporary architecture and practical family living. Nestled down a track off of Nutfield Road this home feels tranquil whilst still being a 15-20 minute walk to Merstham station taking you direct into London in under 30 minutes.

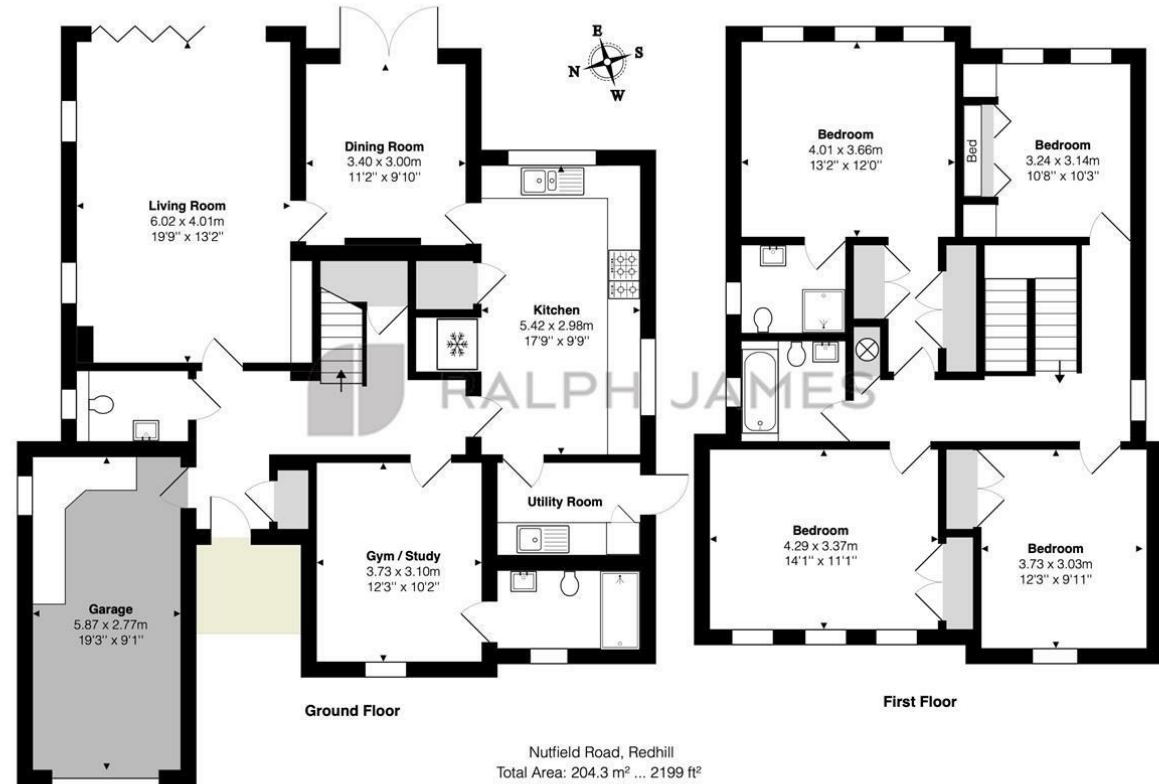
As you enter into the hallway you're greeted by a glass wrap around staircase in the middle of the house which has multiple flexible living spaces leading off it. A snug/Gym to the front of the property and then a formal living and dining room to the rear, both with direct lines out to the garden space which provides that perfect indoor/outdoor lifestyle. The kitchen and utility take up the right side of the house whilst the garage does the same on the left hand side. The utility has a door out to the side to act as a boot/cloak room.

Upstairs is four generously sized bedrooms, one with en-ensuite and the rest of the bedrooms are looked after by the family bathroom. The plot provides a superb driveway and the garden speaks for itself.



# Need to know

- Four bedroom detached family home
- Contemporary design standing out in the current market place
- Superb family garden.
- Three reception rooms, kitchen, separate utility and garage all on the ground floor.
- 15 - 20 minutes walk to Merstham station offering direct links into London as well as the Thames Link.
- Newly built in 2012
- Four great size bedrooms and three bathrooms
- Large driveway for multiple cars
- Tranquil living on the doorstep of Mercer's lake and local nature reserve.
- EPC rating: C



FOR ILLUSTRATIVE PURPOSES ONLY.

Whilst every attempt has been made to ensure the accuracy of the floor plan shown, all measurements, positioning, fixtures, features, fittings and any other data shown are an approximate interpretation for illustrative purposes only and are not to scale.

No responsibility is taken for any error, omission, miss-statement or use of data shown.

The above statement applies to both 'Still Moving London LTD' and the Company or individual displaying this floor plan.

Unauthorised reproduction prohibited.

© Still Moving London LTD (www.stillmoving.london)



## Interested?

redhill@ralphjames.co.uk  
01737 765 555

1

ralphjames.co.uk