



4 Castle View

Cleavelands Road, Wroxall, Wroxall, Isle of Wight PO38 3DZ



Tucked away within a peaceful location amongst beautiful rural surroundings, this charming two-bedroom home has been superbly styled to offer chic cottage interiors and enjoys an enchanting garden complete with a summer house.

- Two-bedroom semi-detached cottage
- New gas boiler installed in March 2022
- Traditional original features
- Family bathroom and ground floor cloakroom
- Driveway parking for two vehicles
- Recently refurbished throughout
- Two reception rooms with fireplaces
- Beautifully landscaped garden with a summer house
- Fabulous downland views from the front elevation
- Close to local amenities, schools, and rural footpaths

For more information and to arrange a viewing, please contact Susan Payne Property on **01983 566244**.

Preview our newest listings first!
Search on Facebook for:
Susan Payne Property
Home Hunters

rightmove

Zoopla

OnTheMarket.com

PrimeLocation

The Property Ombudsman

You can also email us at sales@susanpayneproperty.co.uk, visit our website at susanpayneproperty.co.uk or visit us at East Quay, Wootton Bridge, Isle of Wight PO33 4LA. You can also follow us on Facebook, Twitter and Instagram.



Dating back to 1885, this historical cottage exudes the characterful charm one would expect from a traditional Victorian home with its abundance of original features which have been beautifully retained as part of a recent refurbishment by the current owners. Superbly finished with tasteful neutral interiors that complement the traditional character, the accommodation offers two living areas comprising a gorgeous sitting room and a dining room which connects with a beautifully renovated kitchen via a wide, squared opening, creating a semi-open plan feel and a sociable environment. The ground floor also provides the benefit of a cloakroom neatly tucked away beneath the staircase, and on the first floor is a redecorated bathroom boasting a traditional claw foot bath and the benefit of a separate shower cubicle. Each of the two bedrooms offer a good double size and both have delightful views of either the fantastic garden or downland landscape beyond the rooftops.

Beautifully landscaped by the previous owners, it is evident that the rear garden has been carefully considered to offer multiple, well-designed areas amongst an abundance of exotic and flowering planting, which attracts plenty of local wildlife. The rear garden also boasts a fantastic timber summer house at the top which offers a versatile space separate from the home, complete with power and lighting. A further sought-after feature of this property is the block paved driveway to the front, providing off-road parking for two vehicles.

Offering an idyllic village lifestyle, 4 Castle View is located within a peaceful no-through road in the highly desirable village of Wroxall which is nestled amid the picturesque downlands, between the popular seaside towns of Shanklin and Ventnor, both of which enjoy stunning beaches, independent shops, and good restaurants. Within easy walking distance from the property, a wide variety of village amenities include a convenience store incorporating a post office, a primary school, an active community center, and The Star pub providing a great starting point for glorious walks within the surrounding countryside. The Island's infamous Red Squirrel Trail is very close by which provides 32 miles of mostly traffic-free cycling routes through the heart of the Island's beautiful landscapes. Within a twenty-minute walk from Clevelands Road is the renowned Isle of Wight Donkey Sanctuary and the historical Appuldurcombe House with ornamental gardens designed by Capability Brown. The nearby picturesque village of Godshell boasts some of the oldest and prettiest architecture on the Isle of Wight, such as its medieval church, thatched-roofed cottages, and traditional tearooms. Wroxall public transport links are provided by Southern Vectis bus route 3, connecting with Newport, Ventnor, Shanklin and Ryde, which operates regularly through most of the day.

Welcome to 4 Castle View

From the quiet Clevelands Road, the property has a partial stone wall to the front along with well-kept hedging and a block paved driveway which provides an approach to this charming stone cottage. Created by the current owners, a characterful pathway with terracotta tiling and pebble edging leads to a white UPVC front door with a decorative glazed pane.

Entrance Hall

Providing an accurate glimpse at the characterful interiors found throughout the property, this well-presented entrance hall has a feature botanical wallpaper, a traditional tiled floor and a grey-painted wooden turning staircase ascending to the first floor. Fitted with a bulb light fixture and a radiator, this space has a wooden panel door to the sitting room and a partially glazed panel door to the dining room. Furthermore, this space provides access to an under-stair cloakroom and features traditional skirting boards which continue throughout the majority of the accommodation.

Cloakroom

With a dark tiled floor and a small window to the side aspect, this cloakroom provides w.c. and a wall-mounted hand basin with a white tile splashback.



Sitting Room

15'03 into bay x 11'04 max (4.65m into bay x 3.45m max)

Featuring characterful wooden floorboards and picture rails, this beautifully decorated room enjoys plenty of natural light from a bay window to the front aspect. Creating a charming focal point, there is an exposed brick fireplace with a grey-painted wooden surround and an attractive green tiled hearth mounted with a wood-burning stove. Warmed by a radiator, this room also includes a television aerial connection and an electrical consumer unit concealed within a built-in cupboard.

Dining Room

12'0 x 11'05 max (3.66m x 3.48m max)

Seamlessly connecting with the kitchen through a squared opening, this delightful room continues with the exposed wooden floorboards and exhibits traditional ceiling paneling complemented by picture rails. Additional character is provided by an original cast iron feature fireplace with classic red tiling and an attractive white-painted wooden surround. Also located here is a glazed door to the rear garden and a radiator.

Kitchen

8'09 x 8'0 (2.67m x 2.44m)

This charming kitchen offers a range of fitted base and wall units providing a combination of cream cupboards and drawers with steel cottage cup handles, and rustic basket drawers. With a neutral tiled splashback, a solid wood countertop incorporates a resin sink and drainer with a vintage style, chrome mixer tap, and a window to the rear aspect. Beneath an additional window to the rear, a section of tiled worktop provides space beneath with plumbing connections for a washing machine. Perfectly complementing the traditional theme of the kitchen, a gas range Leisure cooker in cream is nestled between the kitchen units with a black cooker hood located above. Illuminated by under-cabinet lighting and a ceiling bulb fitting, this room also provides space to position other appliances such as a fridge-freezer. Also located here is a warm neutral tiled floor and a gas meter concealed within a wall cupboard.

First Floor Landing

Ascending the first floor landing, a wooden stairwell has grey-painted dado-height wooden wall paneling, running parallel with the incline of the staircase. Featuring a window to the front aspect offering picturesque rural views, this space features exposed wooden floorboards which continue to the bedrooms and an elegant sage green feature wall with a decorative nature-inspired print above the stairwell wall panels. Fitted with a ceiling bulb fitting, the landing has three traditional panel doors opening to two bedrooms and a bathroom.

Bedroom One

12'03 x 11'04 max (3.73m x 3.45m max)

Offering downland views through a window to the front aspect, this beautifully presented bedroom enjoys an original cast iron feature fireplace and a built-in wardrobe on one side of the chimney breast. A radiator and ceiling bulb fitting are also located here.

Bedroom Two

11'11 x 11'06 max (3.63m x 3.51m max)

Similar in size to bedroom one, this room offers another well-appointed space with a window to the rear providing fantastic views over the garden below. Again, this bedroom includes a charming cast iron feature fireplace, a radiator, and a ceiling bulb fitting.



Family Bathroom

Beautifully styled, this spacious bathroom is finished with grey-painted wooden floorboards and boasts a traditional cast iron bath which is perched on decorative claw feet and has a white tile surround which features around a w.c. A pedestal hand basin with gold-tone taps also has a wall-mounted glass shelf above and white splashback tiling with duck-egg blue accent tiles. Furthermore, this bathroom provides the benefit of a separate shower cubicle with chrome fixtures, again with a white tile surround to match the hand basin splashback. Warmed by a radiator, this room also includes a multi-spotlight fixture, an opaque glazed window to the rear aspect, and a full-height built-in cupboard which houses the recently installed Glow-worm gas combination boiler.

Garden

Providing a sense of enchantment and an absolute nature haven, the fully enclosed, beautifully established rear garden will appeal to any keen gardener and those who enjoy a sense of privacy amongst a diverse range of planting. Sheltered by a lean-to, a block paved area spans the width of the property and leads to a side gate, plus provides access to two brick storage sheds, attached to the property. A charming old stone retaining wall with rich shrub beds gives way to a set of steps to the side which continues to a pathway flowing around the garden areas beyond, featuring two secluded circular spaces - with one providing a paved seating terrace and the other an immaculate green lawn space, revealed through an arched pergola woven with climbing roses. As you meander through the garden there is a combination of rich plant borders and beds featuring an array of well-established exotic planting, shrubs, and trees such as banana plants, New Zealand flax, colourful camellias, a vibrant acer, and a eucalyptus tree, to name a few! Offering a variety of seating areas throughout, the garden also enjoys a fantastic timber-built summer house at the top with a decked terrace overlooking a delightful fish pond.

Summer House

15'06 x 11'08 (4.72m x 3.56m)

This charming timber summer house presents a perfect solution for those seeking additional living space, a separate work environment, or a creative studio. Situated in a peaceful spot at the top of the garden, internally this space benefits from power and lighting, plus a range of wooden base and wall units, perfect for workshop-related tasks and utilising for storage.

Parking

A block paved driveway to the front of the property provides off-road parking for two vehicles.

4 Castle View is a must-see characterful cottage offering beautifully refurbished accommodation and is situated in a peaceful spot with downland views and a well-designed rear garden. An early viewing is highly recommended with the sole agent Susan Payne Property.

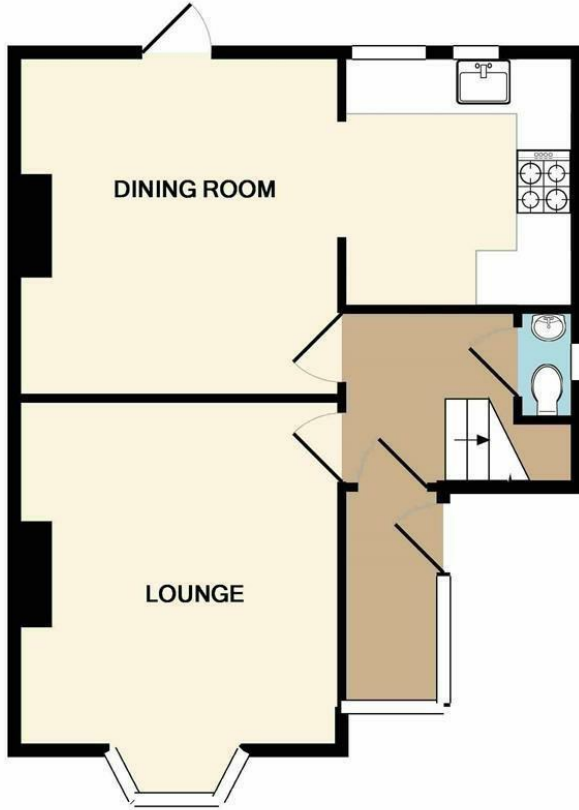
Additional Details

Tenure: Leasehold

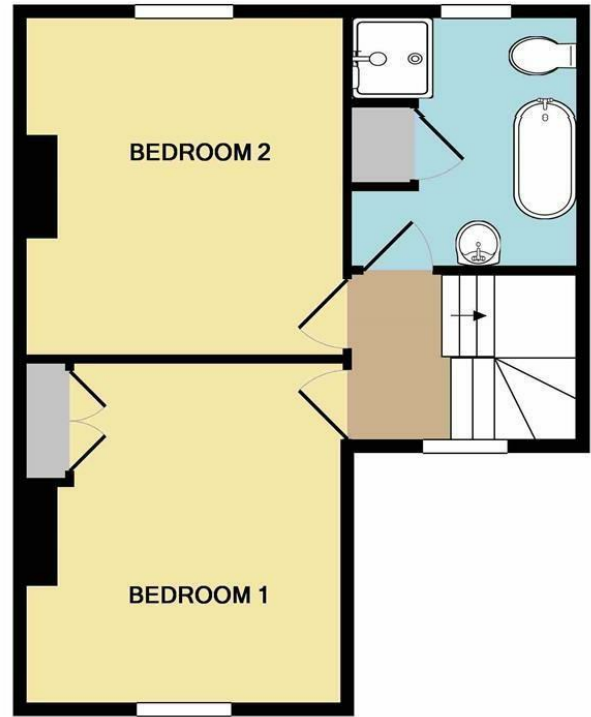
Lease Term: 999 years from 1885

Council Tax Band: TBC

Services: Gas central heating, electricity, mains water and drainage



GROUND FLOOR



1ST FLOOR

Whilst every attempt has been made to ensure the accuracy of the floor plan contained here, measurements of doors, windows, rooms and any other items are approximate and no responsibility is taken for any error, omission, or mis-statement. This plan is for illustrative purposes only and should be used as such by any prospective purchaser. The services, systems and appliances shown have not been tested and no guarantee as to their operability or efficiency can be given
Made with Metropix ©2018



Energy Efficiency Rating		
	Current	Potential
Very energy efficient - lower running costs		
(92 plus) A		
(81-91) B		
(69-80) C		
(55-68) D		
(39-54) E		
(21-38) F		
(1-20) G		
Not energy efficient - higher running costs		
England & Wales	EU Directive 2002/91/EC	80

Environmental Impact (CO ₂) Rating		
	Current	Potential
Very environmentally friendly - lower CO ₂ emissions		
(92 plus) A		
(81-91) B		
(69-80) C		
(55-68) D		
(39-54) E		
(21-38) F		
(1-20) G		
Not environmentally friendly - higher CO ₂ emissions		
England & Wales	EU Directive 2002/91/EC	

Agent Notes:

The information provided about this property does not constitute or form part of an offer or contract, nor may it be regarded as representations. All interested parties must verify accuracy and your solicitor must verify tenure/lease information, fixtures and fittings and, where the property has been extended/converted, planning/building regulation consents.

All dimensions are approximate and quoted for guidance only and their accuracy cannot be confirmed. Reference to appliances and/or services does not imply that they are necessarily in working order or fit for the purpose. Susan Payne Property Ltd. Company no.10753879.