

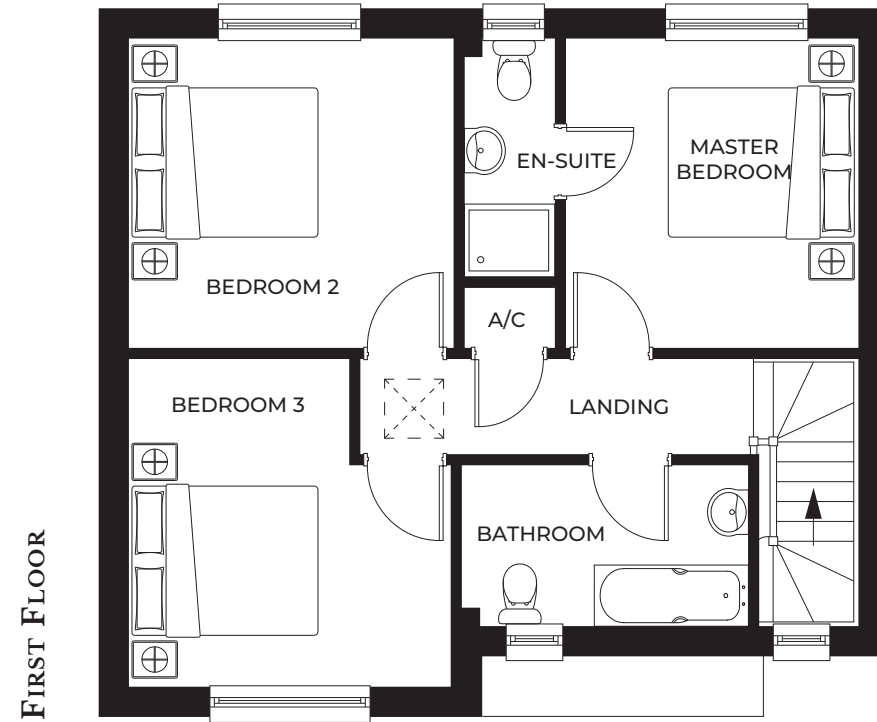
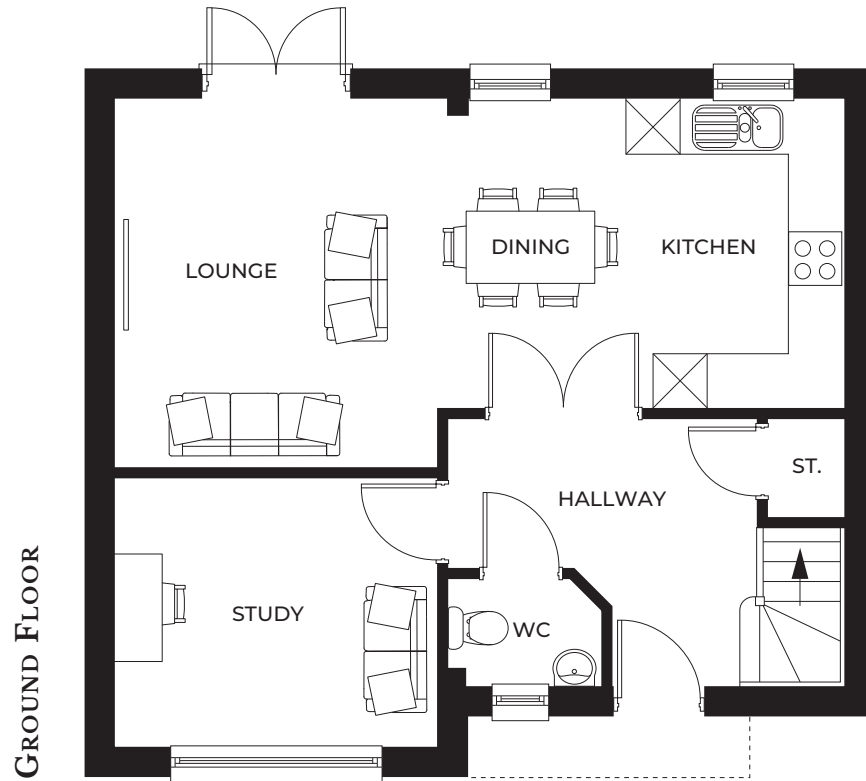


THE MERIDIAN

Bedrooms: 3 | Total floorplan area: 112m² / 1,210ft²

THE MERIDIAN

Bedrooms: 3 | Total floorplan area: 112m² / 1,210ft²



GROUND FLOOR

| | |
|------------------|---------------------------------|
| Kitchen / Dining | 3.49m* x 4.41m* / 11'4" x 14'6" |
| Lounge | 3.56m* x 4.04m* / 11'7" x 13'3" |
| Study | 3.51m x 2.94m / 11'5" x 9'6" |
| WC | 1.76m* x 1.3m* / 5'8" x 4'0" |

FIRST FLOOR

| | |
|----------------|---------------------------------|
| Master bedroom | 3.49m x 3.24m / 11'5" x 10'6" |
| En-suite | 1.02m x 2.58m / 3'3" x 8'5" |
| Bedroom 2 | 3.49m x 3.52m / 11'5" x 11'6" |
| Bedroom 3 | 3.51m* x 3.50m* / 11'5" x 11'5" |
| Bathroom | 3.17m x 1.75m / 10'4" x 5'7" |