

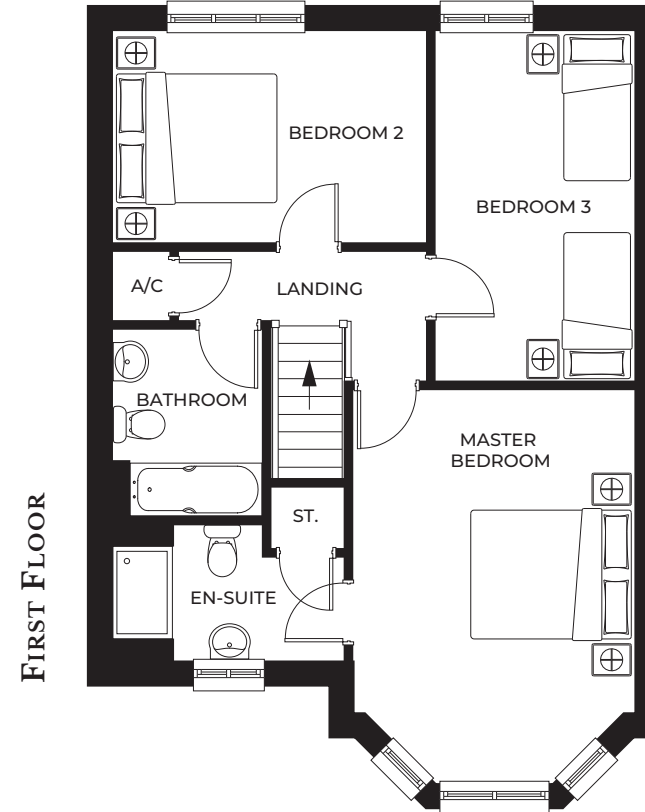
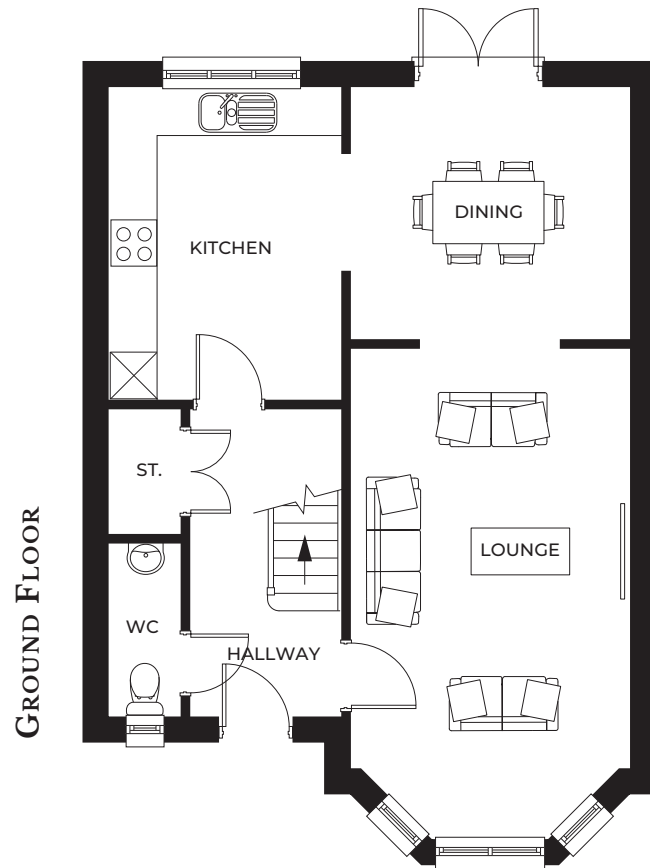


THE WINDSOR

Bedrooms: 3 | Total floorplan area: 120m² / 1,295ft²

THE WINDSOR

Bedrooms: 3 | Total floorplan area: 120m² / 1,295ft²



GROUND FLOOR

Kitchen	3.04m x 3.99m / 10'0" x 13'1"
Dining	3.50m x 3.12m / 11'5" x 10'2"
Lounge	5.42m x 3.50m* / 17'8" x 11'5"
WC	2.25m x 1.04m / 7'4" x 3'4"

FIRST FLOOR

Master bedroom	3.51m* x 3.12m* / 11'5" x 16'3"
En-suite	1.67m* x 3.13m* / 5'5" x 10'3"
Bedroom 2	2.68m x 4.05m / 8'8" x 13'3"
Bedroom 3	2.50m x 4.46m / 8'2" x 14'6"
Bathroom	1.93m x 2.40m / 6'3" x 7'9"