



Twilley Street  
Wandsworth, SW18

CHESTERTONS









A superb two bedroom with study family house with stunning garden overlooking the River Wandle. Couples and Families only.

- Beautiful Edwardian terraced house
- Open plan reception/kitchen with bay window and period features
- Large accommodation of approximately 1400sqft
- Two double bedrooms
- One modern and spacious family bathroom

**£657.69 per week (£2,850 pcm)**

Additional tenant charges apply (fees apply to non-AST tenancies only)

Tenancy Agreement Fee: £300

References per Tenant/Guarantor: £60

Inventory check (approx. £100 – £250 inc. VAT)

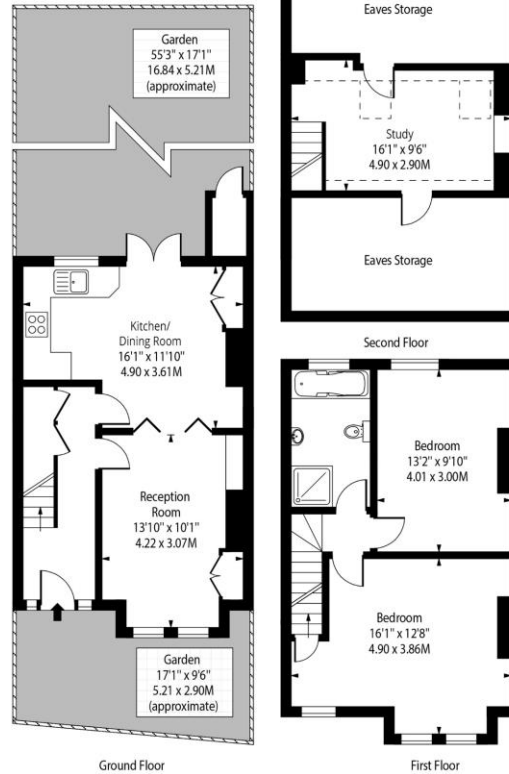
[chestertons.co.uk/property-to-rent/applicable-fees](http://chestertons.co.uk/property-to-rent/applicable-fees)

Energy Efficiency Rating		
Energy efficient - lower running costs	Current	Potential
90-100 A		
81-90 B		
69-80 C		
55-68 D		
49-54 E		
45-49 F		
35-39 G		
Not energy efficient - higher running costs		
EU Directive 2002/91/EC		
England, Scotland & Wales		

**Minimum Term:** 12 months  
**Deposit Required:** £3,288.46  
**Local Authority:** Wandsworth  
**Council Tax Band:** E  
**EPC Rating:** D  
**Unfurnished**

*Chestertons JP Wandsworth Common Lettings*

[chestertons.co.uk](http://chestertons.co.uk)



Approx Gross Internal Area **1224 Sq Ft - 113.71 Sq M**

(Includes Eaves and Limited Use Area - 292 Sq Ft)

Drawn in accordance with IPMS 2: Residential

For Illustration Purposes Only - Not to Scale

Ref: No. 44804

