



Allfarthing Lane

London, SW18

£4,000 pcm

An attractive period property well located close to local amenities and schools. The property boasts a spacious reception room, impressive contemporary kitchen/breakfast room, large private garden, 5 spacious bedrooms and 3 bathrooms.



Allfarthing Lane

London, SW18

- Attractive period property
- Well located for schools and amenities
- Offered unfurnished
- Five double bedrooms
- Three bathrooms
- Large private garden



We are delighted to offer this attractive period property well located close to local amenities and schools.

Internally the property comprises of a spacious reception room boasting a feature fireplace, impressive contemporary kitchen/breakfast room with sky light, integrated appliances and floor to ceiling sliding double glazed doors opening onto the large private garden. There are 5 spacious bedrooms set over the remaining levels with both the master and second bedroom having ensuite bathrooms and a third family bathroom on the third floor.

Tenure: To be advised
Unfurnished

Additional tenant charges apply (fees apply to non-AST tenancies only)
Tenancy Agreement Fee: £300
References per Tenant/Guarantor: £60
Inventory check (approx. £100 – £250 inc. VAT)
[chestertons.com/property-to-rent/applicable-fees](https://www.chestertons.com/property-to-rent/applicable-fees)

Energy Efficiency Rating		
	Current	Potential
Very energy efficient - lower running costs		
(94-100) A		
(81-93) B		
(69-80) C		
(55-68) D		
(39-54) E	54	57
(21-38) F		
(1-20) G		
Not energy efficient - higher running costs		
England, Scotland & Wales EU Directive 2002/91/EC		

Chestertons Wandsworth Lettings

11 Huguenot Place
London
SW18 2EN
lettings.wandsworth@chestertons.com
02081047540
[chestertons.com](https://www.chestertons.com)

Allfarthing Lane, SW18

Approximate gross internal area
265.23 sq m / 2855 sq ft



Key :
CH - Ceiling Height

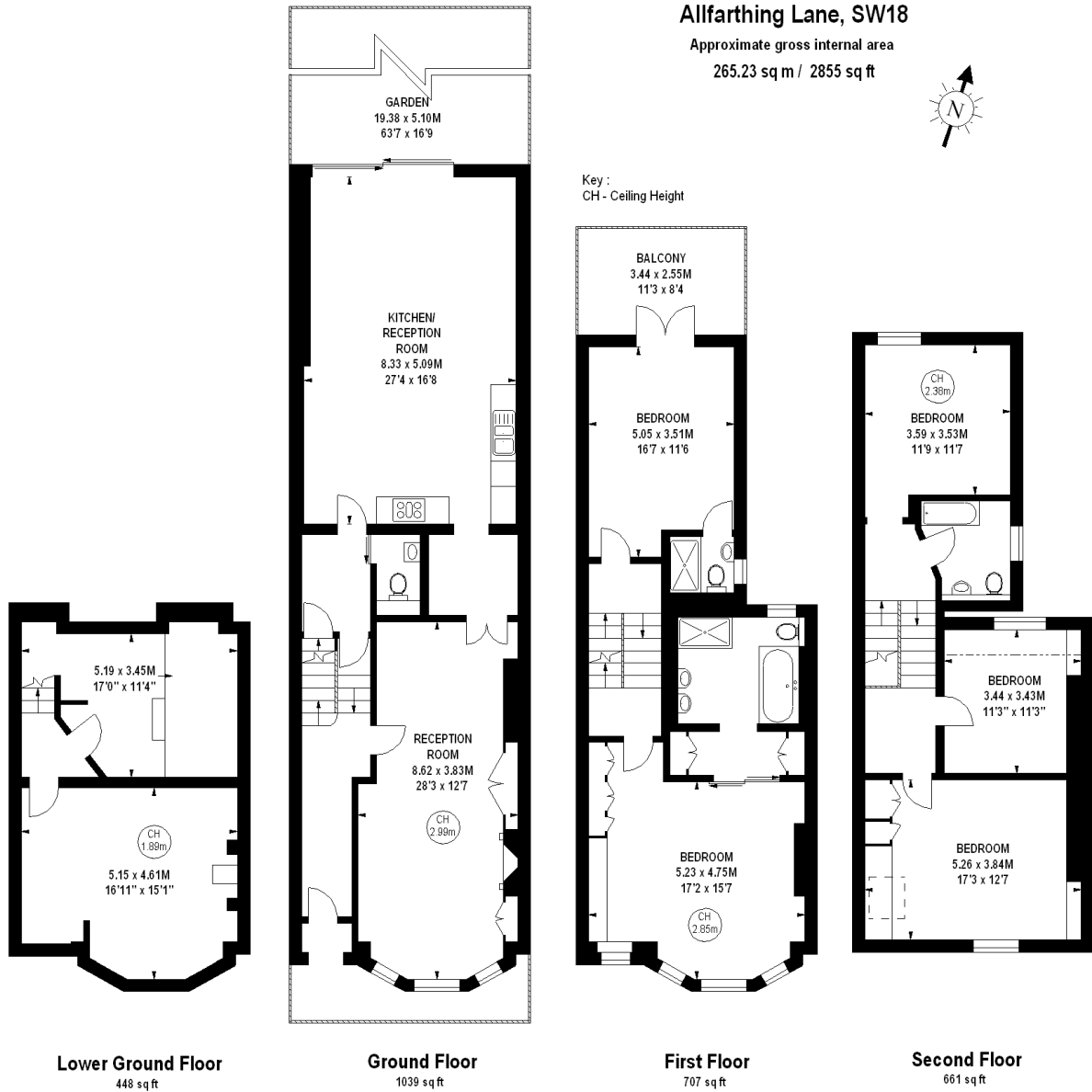


Illustration For Identification Purposes Only. Not To Scale
*Floorplan Drawn According To RICS Guidelines
Copyright of FeaturePRO

