



# Ensign House

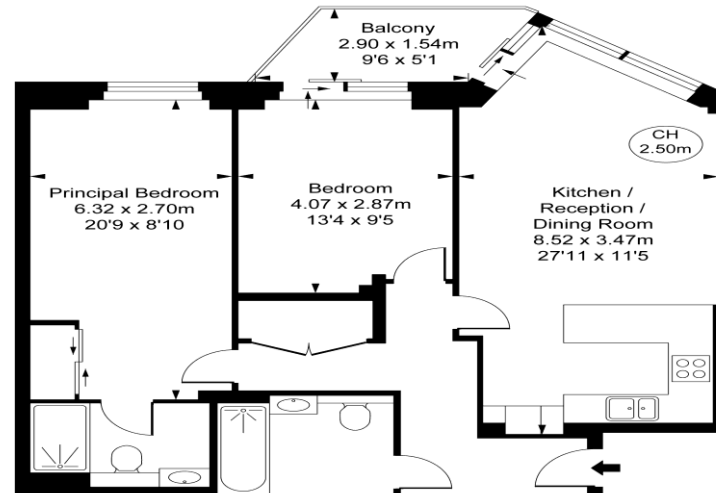
Juniper Drive, SW18

Spacious apartment is ideally located within the popular riverside development Battersea Reach. Excellent on site facilities including 24/7 concierge service and residents only Gym.

**CHESTERTONS**

**Ensign House,  
Juniper Drive, SW18**  
Approximate Gross Internal Area  
75.96 sq m / 818 sq ft

( CH = Ceiling Heights )



- Two Double Bedrooms
- Two Bathrooms
- 24hour Concierge
- On-site residents gym

**£2,425 pcm**

Additional tenant charges apply (fees apply to non-AST tenancies only)

Tenancy Agreement Fee: £300

References per Tenant/Guarantor: £60

Inventory check (approx. £100 – £250 inc. VAT)

[chestertons.com/property-to-rent/applicable-fees](https://www.chestertons.com/property-to-rent/applicable-fees)

Energy Efficiency Rating		
	Current	Potential
Very energy efficient - lower running costs		
(94-100) <b>A</b>		
(81-93) <b>B</b>	84	86
(69-80) <b>C</b>		
(55-68) <b>D</b>		
(39-54) <b>E</b>		
(21-38) <b>F</b>		
(1-20) <b>G</b>		
Not energy efficient - higher running costs		
England, Scotland & Wales EU Directive 2002/91/EC		

**Tenure:** Long Let

**Unfurnished**

**Chestertons Wandsworth Lettings**

11 Huguenot Place

London

SW18 2EN

[lettings.wandsworth@chestertons.com](mailto:lettings.wandsworth@chestertons.com)

02081047540

[chestertons.com](https://www.chestertons.com)

Chesterton Global Ltd trading as Chestertons for themselves and for the vendor of this property whose agents they are, give notice that (i) these particulars do not constitute any part of an offer or contract, (ii) all statements contained within these particulars are made without responsibility on the part of Chestertons or the vendor, (iii) whilst made in good faith, none of the statements contained within these particulars are to be relied upon as a statement or representation of fact, (iv) any intending purchasers must satisfy themselves by inspection or otherwise as to the correctness of each of the statements contained within these particulars, (v) the vendor does not make or give either Chestertons or any person in their employment any authority to make or give representation or warranty whatsoever in relation to this property. Wide angle lenses may be used. ©Copyright Chestertons | Chesterton Global Ltd | Registered Office 40 Connaught Street, Hyde Park, London W2 2AB Registered Company Number 05334580.



This paper is  
100% recyclable